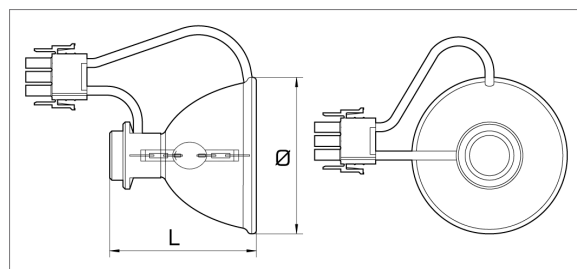


Order no.: 270220

### Techn. Values:

Designation:	MHR 100 D
Wattage (W):	100
Lamp current (A):	1,2
Voltage (V):	95
Luminous flux (lm):	1600*
Colour temperature (K):	5200
Diameter (mm max.):	71
Length (mm max.):	70
Luminous flux1 (lm):	1300
Luminous flux2 (lm):	4400
Focal distance (mm):	53
Base:	Stecker 3-polig
Average life (h):	6000
Burning position:	p10
Packing unit:	1
Ra-Value:	72



p10

### ADVANTAGES:

- Simple lamp exchange without readjustment
- Cool beam effect
- High efficacy because of a short axial arc and optimal lamp adjustment
- Ideal for use with plastic fibres with small fibre diameters
- Can be used with standard metal-halide lamp ballasts and ignitors
- Hot re-ignition possible (MHR 100 D/HR and MHR 150 N)
- Lamps with thermo-couple available on request

### APPLICATION:

in decorative areas, e.g.:

- Architecture
- Interior lighting
- Fountains and swimming pools