



# MASTER LEDtube InstantFit HF

MASTER LEDtube HF 1200mm SO 16.5W 865 T8 RS

The Philips MASTER LEDtube integrates a LED light source into a traditional fluorescent form factor. Its unique design creates a perfectly uniform visual appearance which cannot be distinguished from traditional fluorescent. The MASTER LEDtube Performance is the ideal solution for customers which have higher light requirements and the want to maximize value over lifetime.(need the longest lifetime). Full energy savings and TCO benefits.

## Product data

### • General Information

Cap-Base	G13 [ Medium Bi-Pin Fluorescent]
Main Application	Industrial
Nominal Lifetime (Nom)	50000 h
Switching Cycle	50000X
B50L70	50000

### • Light Technical

Color Code	865 [ CCT of 6500K]
Beam Angle (Nom)	160 °
Luminous Flux (Rated) (Nom)	1600 lm
Rated Beam Angle	160 °
Correlated Color Temperature (Nom)	6500 K
Color Consistency	6 steps
Color Rendering Index (Nom)	83
Lmf At End Of Nominal Lifetime (Nom)	70 %

### • Operating and Electrical

Input Frequency	25000/75000 Hz
Power (Rated) (Nom)	16.5 W
Starting Time (Max)	0.5 s
Warm Up Time To 60% Light (Nom)	instant full light
Power Factor (Min)	0.9
Voltage (Nom)	50-100 V

### • Temperature

T-Ambient (Max)	35 °C
T-Ambient (Min)	-20 °C
T-Storage (Max)	65 °C
T-Storage (Min)	-40 °C
T-Case Maximum (Max)	45 °C

### • Controls and Dimming

Dimmable	No
----------	----

### • Mechanical and Housing

Product Length	1200 mm
----------------	---------

### • Approval and Application

Energy Saving Product	Yes
Suitable For Accent Lighting	No
Energy Efficiency Label (EEL)	A
Energy Consumption kWh/1000 h	20 kWh

### • Product Data

Full product code	871829172887000
Order product name	MASTER LEDtube HF 1200mm SO 16.5W 865 T8 RS
EAN/UPC - Product	8718291728870
Order code	929000284502
Numerator - Quantity Per Pack	1

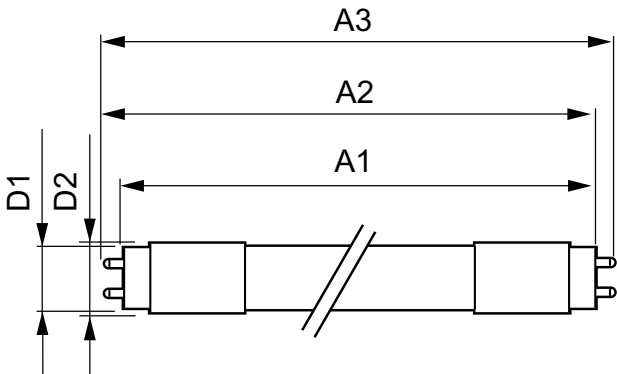
# PHILIPS

# MASTER LEDtube InstantFit HF

Numerator - Packs 10  
per outer box

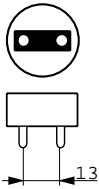
Material Nr. (12NC) 929000284502  
Net Weight (Piece) 0.360 kg

## Dimensional drawing



### LEDtube HF 1200mm SO 16.5W 865 T8

Product	D1	D2	A1	A2	A3
MASTER LEDtube HF 1200mm SO 16.5W 865 T8 RS	25.68 mm	28 mm	1198.0 mm	1205.0 mm	1212.0 mm



© 2016 Philips Lighting Holding B.V.  
All rights reserved.

Specifications are subject to change without notice. Trademarks are the property of Koninklijke Philips N.V. (Royal Philips) or their respective owners.

[www.philips.com/lighting](http://www.philips.com/lighting)

2016, February 24  
data subject to change