



MASTER LEDtube EM/ Mains

MAS LEDtube 1500mm SO 20W 840 T8

The Philips MASTER LEDtube integrates a LED light source into a traditional fluorescent form factor. Its unique design creates a perfectly uniform visual appearance which cannot be distinguished from traditional fluorescent. For those that are looking for value for money within limited budget and re-lamping efforts for better light effect and lifetime.

Product data

• General Information

Cap-Base	G13 [Medium Bi-Pin Fluorescent]
Main Application	Industrial
Nominal Lifetime (Nom)	50000 h
Switching Cycle	200000X
B50L70	50000

• Light Technical

Color Code	840 [CCT of 4000K (841)]
Beam Angle (Nom)	160 °
Luminous Flux (Rated) (Nom)	2000 lm
Rated Beam Angle	160 °
Correlated Color Temperature (Nom)	4000 K
Color Consistency	<lt/>6
Color Rendering Index (Nom)	83
Lmf At End Of Nominal Lifetime (Nom)	70 %

• Operating and Electrical

Input Frequency	50/60 Hz
Power (Rated) (Nom)	20 W
Starting Time (Max)	0.5 s
Warm Up Time To 60% Light (Nom)	instant full light
Power Factor (Min)	0.9
Voltage (Nom)	220-240 V

• Temperature

T-Ambient (Max)	45 °C
T-Ambient (Min)	-20 °C
T-Storage (Max)	65 °C
T-Storage (Min)	-40 °C
T-Case Maximum (Max)	50 °C

• Controls and Dimming

Dimmable	No
----------	----

• Mechanical and Housing

Product Length	1500 mm
----------------	---------

• Approval and Application

Energy Saving Product	Yes
Suitable For Accent Lighting	No
Energy Efficiency Label (EEL)	A+
Approval Marks	CE marking RoHS compliance KEMA Keur certificate
Energy Consumption kWh/1000 h	20 kWh

• Product Data

Full product code	871829173451200
Order product name	MAS LEDtube 1500mm SO 20W 840 T8
EAN/UPC - Product Order code	8718291734512 929000287602

PHILIPS

MASTER LEDtube EM/Mains

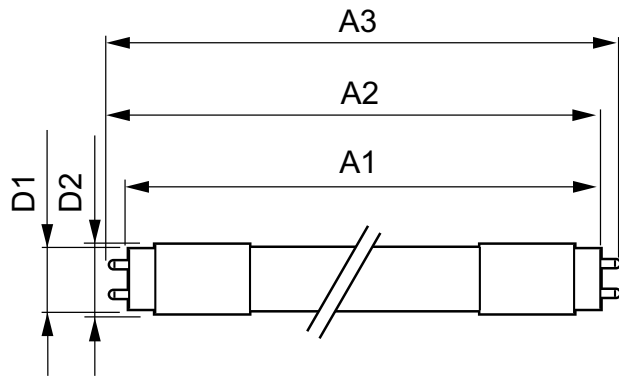
Numerator - Quantity Per Pack 1
Numerator - Packs per outer box 10

Material Nr. (12NC) 929000287602
Net Weight (Piece) 0.450 kg

Warnings and Safety

• -

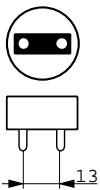
Dimensional drawing



MASTER LEDtube HF, VLE, VALUE HF

LEDtube VLE 1500mm 20W/840 T8 C

Product	D1	D2	A1	A2	A3
MAS LEDtube 1500mm SO 20W 840 T8	25.68 mm	28 mm	1500.0 mm	1507.1 mm	1514.2 mm



© 2016 Philips Lighting Holding B.V.
All rights reserved.

Specifications are subject to change without notice. Trademarks are the property of Koninklijke Philips N.V. (Royal Philips) or their respective owners.

www.philips.com/lighting

2016, January 26
data subject to change