



Plusline ES Small

Plusline ES Small 118mm 2y 160W R7s 230V 1BB

Mains-voltage halogen linear lamp with superior quality and reliability. Offers very long lifetime and crisp halogen light. Ideal solution for decorative luminaires and for security or task lighting floodlights.

Product data

• General Information

Cap-Base	R7S [R7s]
Operating Position	UNIVERSAL [Any or Universal (U)]
Nominal Lifetime (Nom)	2000 h
Switching Cycle	8000X

• Light Technical

Luminous Flux (Nom)	3100 lm
Luminous Flux (Rated) (Nom)	3100 lm
Correlated Color Temperature (Nom)	2900 K
Luminous Efficacy (rated) (Nom)	19.4 lm/W
Color Rendering Index (Nom)	100
Llmf At End Of Nominal Lifetime (Min)	80 %

• Operating and Electrical

Power (Rated) (Nom)	160.0 W
Lamp Current (Nom)	0.70 A
Wattage Equivalent	200 W
Starting Time (Nom)	0.0 s
Warm Up Time To 60% Light (Nom)	instant full light
Power Factor (Nom)	1
Voltage (Nom)	230 V

• Controls and Dimming

Dimmable	Yes
----------	-----

• Mechanical and Housing

Bulb Finish	Clear (CL)
-------------	------------

• Approval and Application

Energy Efficiency Label (EEL)	D
Energy Consumption kWh/1000 h	160 kWh

• Luminaire Design Requirements

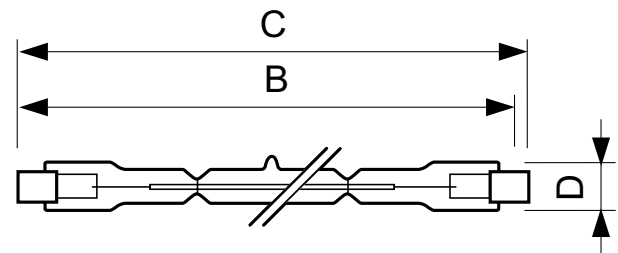
Bulb Temperature (Max)	900 °C
Pinch Temperature (Max)	350 °C

• Product Data

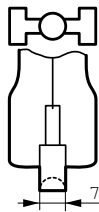
Full product code	872790085219600
Order product name	Plusline ES Small 118mm 2y 160W R7s 230V 1BB
EAN/UPC - Product	8727900852196
Order code	924587544210
Numerator - Quantity Per Pack	1
Numerator - Packs per outer box	100
Material Nr. (12NC)	924587544210
Net Weight (Piece)	9.000 g

PHILIPS

Dimensional drawing



R7s



DESmall 118mm 2y 160W R7s 230V T11 CL

Product	D	B	B	B	C
Plusline ES Small 118mm 2y 160W R7s 230V 1BB	11 mm	115.8 mm	114.2 mm	112.6 mm	118 mm



© 2015 Philips Lighting Holding B.V.
All rights reserved.

Specifications are subject to change without notice. Trademarks are the property of Koninklijke Philips N.V. (Royal Philips) or their respective owners.

www.philips.com/lighting

2015, December 28
data subject to change