



# HID-Basic BSN/BMH MK4 semi-parallel for SON/CDO/CDM/MH/ HPI

## BSN 400 K407-A2-ITS 230/240V 50Hz BC3

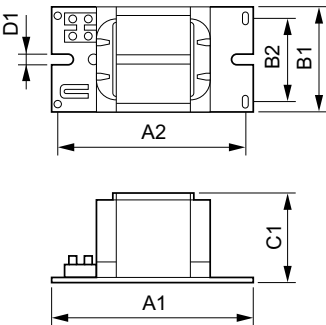
Impregnated electromagnetic copper ballasts for use with an external semi-parallel ignitor for CDM, CDO, MH, HPI (Plus) and SON lamps

### Product data

<b>Operating and Electrical</b>		<b>Order product name</b>		BSN 400 K407-A2-ITS 230/240V 50Hz BC3	
<b>Input Voltage</b>	230 V (default) or 240 V	<b>Order code</b>		913700277826	
<b>Line Frequency</b>	50 Hz	<b>Numerator - Quantity Per Pack</b>		1	
<b>Input Frequency</b>	50 Hz	<b>Numerator - Packs per outer box</b>		2	
		<b>Material Nr. (12NC)</b>		913700277826	
<b>Wiring</b>		<b>Full product name</b>		BSN 400 K407-A2-ITS 230/240V 50Hz BC3	
<b>Connector Type</b>	Screw	<b>EAN/UPC - Case</b>		8727900887044	
		<b>EAN/UPC - Product/Case</b>		8711500881571	
<b>Approval and Application</b>					
<b>Approval Marks</b>	CE marking ENEC certificate				
<b>Product Data</b>					
<b>Full product code</b>	872790088704400				

HID-Basic BSN/BMH MK4 semi-parallel for SON/CDO/CDM/MH/HPI

Dimensional drawing



Product	D1	C1	A1	A2	B1	B2
BSN 400 K407-A2-ITS	6.5 mm	83.0 mm	166.0 mm	145.0 mm	97.0 mm	78.5 mm
230/240V 50Hz BC3						

