

HQI-BT 400 W/D PRO

POWERSTAR HQI-T | Metal halide lamps with quartz technology for enclosed luminaires



Areas of application

- Factories and workshops
- Sports halls and multi-purpose halls
- Industrial installations
- Docks and port facilities
- Marshaling yards, container transshipment facilities
- Buildings, monuments, bridges
- Approved only for use in enclosed luminaires
- Outdoor applications only in suitable luminaires

Product benefits

- Output of up to 400 W
- High efficiency
- Long lifetime
- E40 screw base for simple lamp handling
- UV values significantly below the maximum permitted thresholds to IEC 61167 thanks to UV filter

Product features

- POWERSTAR quartz technology
- Light colors: neutral white (N), daylight (D)



Technical data

Electrical data

Nominal wattage	400.00 W
Rated wattage	420.00 W
Lamp current	4.0 A
PFC capacitor at 50 Hz	45 µF ¹⁾
Nominal voltage	115 V
Ignition voltage	4.0 / 5.0 kVp ²⁾
Rated lamp efficacy (standard condition)	81 lm/W
Rated luminous flux	34000 lm

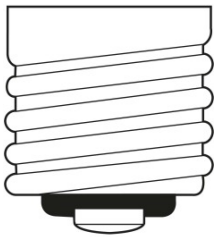
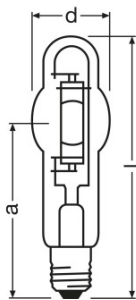
¹⁾ At rated voltage and cos φ ≥ 0.9

²⁾ Minimum / Maximum

Photometrical data

Color rendering index Ra	92
Color temperature	5500 K
Light color	960
Rated LLMF at 2,000 h	0.83
Rated LLMF at 4,000 h	0.76
Rated LLMF at 6,000 h	0.70
Rated LLMF at 8,000 h	0.65
Rated LLMF at 12,000 h	0.55
UV protection	Yes

Dimensions & weight



E40
IEC 7004-24
DIN 49625

Diameter	62.0 mm
Length	285.0 mm
Light center length (LCL)	175.0 mm

Product datasheet

Product weight	200.00 g
----------------	----------

Temperatures & operating conditions

Maximum permitted outer bulb temperature	500 °C
Maximum permitted base edge temperature	250 °C

Lifespan

Rated lamp survival factor at 2,000 h	0.99
Rated lamp survival factor at 4,000 h	0.98
Rated lamp survival factor at 6,000 h	0.95
Rated lamp survival factor at 8,000 h	0.90
Rated lamp survival factor at 12,000 h	0.80
Lifespan B50	16000 h

Additional product data

Base (standard designation)	E40
Product remark	With NAV control gear
Design / version	Clear
Lamp mercury content	59.0 mg

Capabilities

Dimmable	No
Burning position	Any
Enclosed luminaire required	Yes

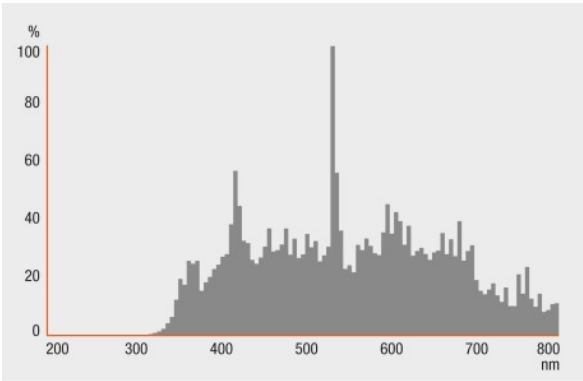
Certificates & standards

Energy efficiency class	A
Energy consumption	462 kWh/1000h

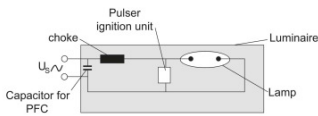
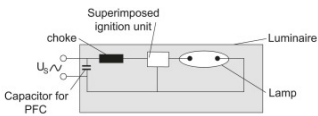
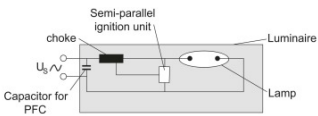
Country specific categorizations

ILCOS	MT/UB-400/960-H/E/SL-E40-62/285
-------	---------------------------------

Light Distribution



Spectral power distribution



Circuit diagram

Circuit diagram

Circuit diagram

Logistical Data

Product code	Product description	Packaging unit (Pieces/Unit)	Dimensions (length x width x height)	Volume	Gross weight
4008321677860	HQI-BT 400 W/D PRO	Shipping carton box 12	342 mm x 347 mm x 258 mm	30.62 dm ³	3534.00 g
4052899199101	HQI-BT 400 W/D PRO	Shipping carton box 12	318 mm x 253 mm x 342 mm	27.52 dm ³	3200.00 g

Product datasheet

The mentioned product code describes the smallest quantity unit which can be ordered. One shipping unit can contain one or more single products. When placing an order, for the quantity please enter single or multiples of a shipping unit.

Disclaimer

Subject to change without notice. Errors and omission excepted. Always make sure to use the most recent release.