

HQI-T 2000 W/N/E SUPER

POWERSTAR HQI-T 1000...2000 W | Metal halide lamps for enclosed luminaires



Areas of application

- Factories and workshops
- Sports halls and multi-purpose halls
- Industrial installations
- Airports
- Docks and port facilities
- Marshaling yards, container transshipment facilities
- Approved only for use in enclosed luminaires
- Outdoor applications only in suitable luminaires

Product benefits

- Output of up to 2,000 W
- High efficiency
- E40 screw base for simple lamp handling
- Long lifetime
- UV values significantly below the maximum permitted thresholds to IEC 61167 thanks to UV filter

Product features

- POWERSTAR quartz technology
- Light colors: neutral white (N), daylight (D)



Product datasheet

Technical data

Electrical data

Nominal wattage	2000.00 W
Rated wattage	1980.00 W
Lamp current	9.6 A
PFC capacitor at 50 Hz	37 μ F ¹⁾
Nominal voltage	220 V
Ignition voltage	4.0 / 5.0 kVp ²⁾
Rated lamp efficacy (standard condition)	124 lm/W
Rated luminous flux	245000 lm

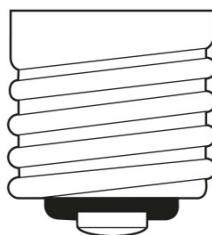
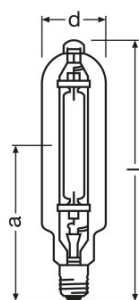
¹⁾ At rated voltage and $\cos \phi \geq 0.9$

²⁾ Minimum / Maximum

Photometrical data

Color rendering index Ra	63
Color temperature	4550 K
Light color	642
Rated LLMF at 2,000 h	0.79
Rated LLMF at 4,000 h	0.66
UV protection	Yes

Dimensions & weight



E40
IEC 7004-24
DIN 49625

Diameter	100.0 mm
Length	430.0 mm
Light center length (LCL)	265.0 mm
Product weight	580.00 g

Temperatures & operating conditions

Product datasheet

Maximum permitted outer bulb temperature	500 °C
Maximum permitted base edge temperature	250 °C

Lifespan

Rated lamp survival factor at 2,000 h	0.99
Rated lamp survival factor at 4,000 h	0.84
Lifespan B50	5500 h

Additional product data

Base (standard designation)	E40
Design / version	Clear
Lamp mercury content	175.0 mg

Capabilities

Burning position	p60
Enclosed luminaire required	Yes

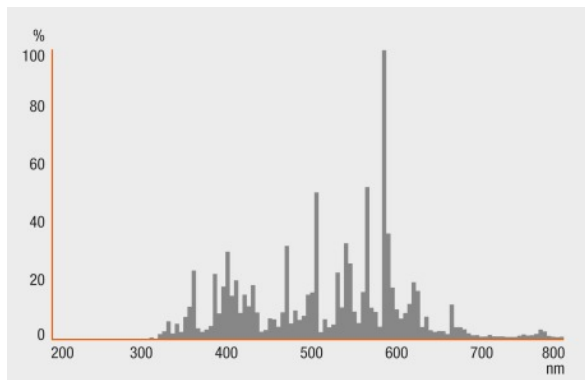
Certificates & standards

Energy efficiency class	A+
Energy consumption	2178 kWh/1000h

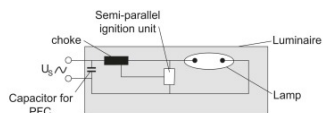
Country specific categorizations

ILCOS	MT/UB-2000/642-E/E/SL-E40-100/430/H
-------	-------------------------------------

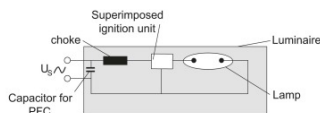
Light Distribution



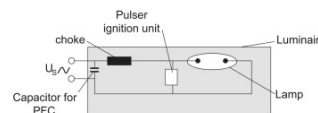
Spectral power distribution



Circuit diagram



Circuit diagram



Circuit diagram

Logistical Data

Product code	Product description	Packaging unit (Pieces/Unit)	Dimensions (length x width x height)	Volume	Gross weight
4008321979063	HQI-T 2000 W/N/E SUPER	Shipping carton box 4	525 mm x 270 mm x 275 mm	38.98 dm ³	3724.00 g

The mentioned product code describes the smallest quantity unit which can be ordered. One shipping unit can contain one or more single products. When placing an order, for the quantity please enter single or multiples of a shipping unit.

Product datasheet

Disclaimer

Subject to change without notice. Errors and omission excepted. Always make sure to use the most recent release.