

## HQI-T 2000 W/N/SN SUPER

POWERSTAR HQI-T 1000...2000 W | Metal halide lamps for enclosed luminaires



### Areas of application

- Factories and workshops
- Sports halls and multi-purpose halls
- Industrial installations
- Airports
- Docks and port facilities
- Marshaling yards, container transshipment facilities
- Approved only for use in enclosed luminaires
- Outdoor applications only in suitable luminaires

### Product benefits

- Output of up to 2,000 W
- High efficiency
- E40 screw base for simple lamp handling
- Long lifetime
- UV values significantly below the maximum permitted thresholds to IEC 61167 thanks to UV filter

### Product features

- POWERSTAR quartz technology
- Light colors: neutral white (N), daylight (D)



Technical data

Electrical data

Nominal wattage	2000.00 W
Rated wattage	2030.00 W
Lamp current	9.9 A
PFC capacitor at 50 Hz	37 µF <sup>1)</sup>
Nominal voltage	220 V
Ignition voltage	0.75 / 1.3 kVp <sup>2)</sup>
Rated lamp efficacy (standard condition)	118 lm/W
Rated luminous flux	240000 lm

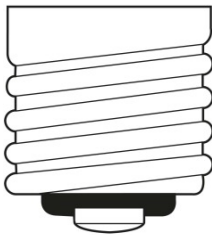
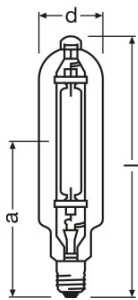
<sup>1)</sup> At rated voltage and cos φ ≥ 0.9

<sup>2)</sup> Minimum / Maximum

Photometrical data

Color rendering index Ra	63
Color temperature	4550 K
Light color	642
Rated LLMF at 2,000 h	0.81
Rated LLMF at 4,000 h	0.67
UV protection	Yes

Dimensions & weight



E40  
IEC 7004-24  
DIN 49625

Diameter	100.0 mm
Length	430.0 mm
Light center length (LCL)	265.0 mm
Product weight	580.00 g

Temperatures & operating conditions

## Product datasheet

Maximum permitted outer bulb temperature	500 °C
Maximum permitted base edge temperature	250 °C

### Lifespan

Rated lamp survival factor at 2,000 h	0.99
Rated lamp survival factor at 4,000 h	0.84
Lifespan B50	5500 h

### Additional product data

Base (standard designation)	E40
Product remark	Lamp ignites at an ignition voltage of 0.9...1.3 kVs; lamps must not be operated with 4...5 kV igniters
Design / version	Clear
Lamp mercury content	175.0 mg

### Capabilities

Burning position	p60
Enclosed luminaire required	Yes

### Certificates & standards

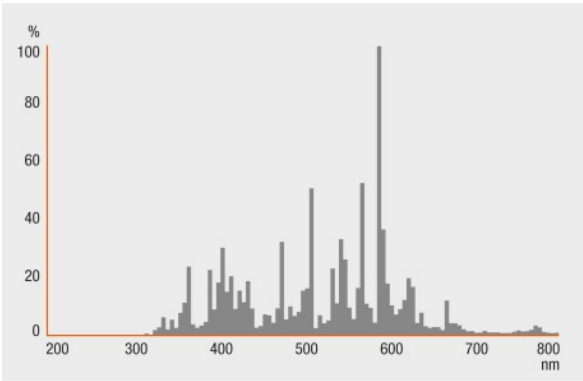
Energy efficiency class	A+
Energy consumption	2233 kWh/1000h

### Country specific categorizations

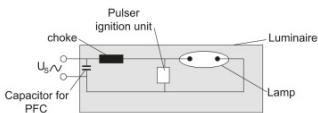
ILCOS	MT/UB-2000/642-E/S/SL-E40-100/430/H
-------	-------------------------------------

Product datasheet

Light Distribution



Spectral power distribution



Circuit diagram

Logistical Data

Product code	Product description	Packaging unit (Pieces/Unit)	Dimensions (length x width x height)	Volume	Gross weight
4008321979087	HQI-T 2000 W/N/SN SUPER	Shipping carton box 4	525 mm x 270 mm x 275 mm	38.98 dm <sup>3</sup>	3724.00 g

The mentioned product code describes the smallest quantity unit which can be ordered. One shipping unit can contain one or more single products. When placing an order, for the quantity please enter single or multiples of a shipping unit.

### Disclaimer

Subject to change without notice. Errors and omission excepted. Always make sure to use the most recent release.