

HQI-T 70 W/WDL

POWERSTAR HQI-T G12 | Metal halide lamps with quartz technology for enclosed luminaires



Areas of application

- Shopping arcades
- Exhibition halls and trade fairs
- Factories and workshops
- Pedestrian zones, public squares
- Buildings, monuments, bridges
- Approved only for use in enclosed luminaires
- Outdoor applications only in suitable luminaires

Product benefits

- High efficiency
- Good to excellent color rendering
- UV values significantly below the maximum permitted thresholds to IEC 61167 thanks to UV filter

Product features

- POWERSTAR quartz technology
- Light colors: warm white (WDL), neutral white (NDL)
- Average lifetime: 9,000 hours



Technical data

Electrical data

Nominal wattage	70.00 W
Rated wattage	75.00 W
Lamp current	0.95 A
PFC capacitor at 50 Hz	12 µF ¹⁾
Nominal voltage	95.0 V
Ignition voltage	3.6 / 5.0 kVp ²⁾
Rated lamp efficacy (standard condition)	71 lm/W
Rated luminous flux	5300 lm

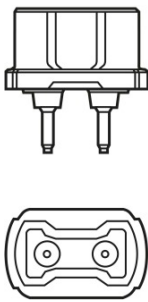
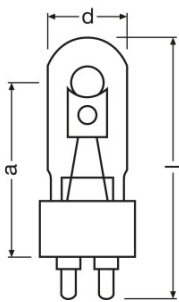
¹⁾ At rated voltage and cos φ ≥ 0.9

²⁾ Minimum / Maximum

Photometrical data

Color rendering index Ra	73
Color temperature	3075 K
Light color	730
Rated LLMF at 2,000 h	0.85
Rated LLMF at 4,000 h	0.80
Rated LLMF at 6,000 h	0.75
Rated LLMF at 8,000 h	0.70
UV protection	Yes

Dimensions & weight



Diameter	25.0 mm
Length	84.0 mm
Light center length (LCL)	56.0 mm
Product weight	30.00 g

Product datasheet

Temperatures & operating conditions

Maximum permitted outer bulb temperature	550 °C
Maximum permitted pinch temperature	280 °C

Lifespan

Rated lamp survival factor at 2,000 h	0.87
Rated lamp survival factor at 4,000 h	0.85
Rated lamp survival factor at 6,000 h	0.75
Rated lamp survival factor at 8,000 h	0.60
Lifespan B50	9000 h

Additional product data

Base (standard designation)	G12
Design / version	Clear
Lamp mercury content	13.9 mg

Capabilities

Dimmable	No
Burning position	Any ¹⁾
Enclosed luminaire required	Yes

¹⁾ Burning position: In horizontal burning position of lamp, base pins must be positioned in such a way that they form a horizontal plane

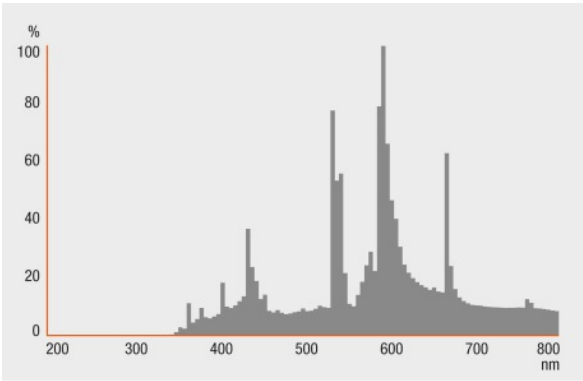
Certificates & standards

Energy efficiency class	A
Energy consumption	83 kWh/1000h

Country specific categorizations

ILCOS	MT/UB-70/730-H/E/SL-G12-25/84
-------	-------------------------------

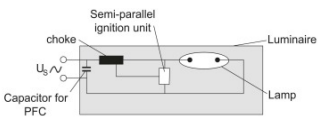
Light Distribution



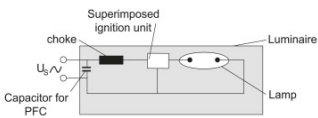
Spectral power distribution

System guarantee

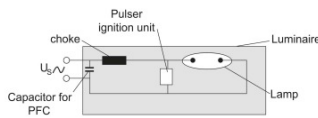
For the vast majority of our lamps we are offering an extended system guarantee in conjunction with OSRAM POWERTRONIC control gear.



Circuit diagram

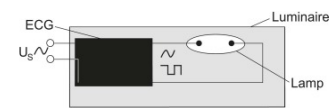


Circuit diagram



Circuit diagram

Product datasheet



Circuit diagram

Logistical Data

Product code	Product description	Packaging unit (Pieces/Unit)	Dimensions (length x width x height)	Volume	Gross weight
4008321974341	HQI-T 70 W/WDL	Shipping carton box 12	180 mm x 127 mm x 140 mm	3.20 dm ³	567.00 g

The mentioned product code describes the smallest quantity unit which can be ordered. One shipping unit can contain one or more single products. When placing an order, for the quantity please enter single or multiples of a shipping unit.

References / Links

For more information on the system guarantee and the terms and conditions of the guarantee visit

► www.osram.com/system-guarantee

Disclaimer

Subject to change without notice. Errors and omission excepted. Always make sure to use the most recent release.