

HQI-TS 150 W/WDL

POWERSTAR HQI-TS EXCELLENCE | Metal halide lamps with quartz technology for enclosed luminaires



Areas of application

- Shop interiors, shop windows
- Shopping arcades
- Foyers, reception areas
- Buildings, monuments, bridges
- Museums, exhibitions
- Exhibition halls and trade fairs
- Pedestrian zones, public squares
- Parks and gardens
- Approved only for use in enclosed luminaires
- Outdoor applications only in suitable luminaires

Product benefits

- High efficiency
- Uniform distribution of light
- Good to excellent color rendering
- Long lifetime
- Hot restrike capable
- UV values significantly below the maximum permitted thresholds to IEC 61167 thanks to UV filter

Product features

- POWERSTAR quartz technology
- Light colors: warm white (WDL), neutral white (NDL), daylight (D), cool daylight (CD)
- Average lifetime: 12,000 hours



Technical data

Electrical data

Nominal wattage	150.00 W
Rated wattage	150.00 W
Lamp current	1.8 A
PFC capacitor at 50 Hz	20 µF ¹⁾
Nominal voltage	93.0 V
Ignition voltage	3.6 / 36 kVp ²⁾
Rated lamp efficacy (standard condition)	80 lm/W
Rated luminous flux	12000 lm

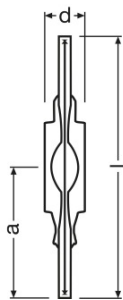
¹⁾ At rated voltage and cos φ ≥ 0.9

²⁾ Minimum / Maximum

Photometrical data

Color rendering index Ra	70
Color temperature	3100 K
Light color	730
Rated LLMF at 2,000 h	0.79
Rated LLMF at 4,000 h	0.75
Rated LLMF at 6,000 h	0.67
Rated LLMF at 8,000 h	0.60
Rated LLMF at 12,000 h	0.50
UV protection	Yes

Dimensions & weight



Diameter	23.0 mm
Length	135.0 mm
Light center length (LCL)	66.0 mm

Product datasheet

Product weight	22.00 g
----------------	---------

Temperatures & operating conditions

Maximum permitted outer bulb temperature	500 °C
Maximum permitted pinch temperature	350 °C

Lifespan

Rated lamp survival factor at 2,000 h	0.95
Rated lamp survival factor at 4,000 h	0.90
Rated lamp survival factor at 6,000 h	0.85
Rated lamp survival factor at 8,000 h	0.80
Rated lamp survival factor at 12,000 h	0.50
Lifespan B50	12000 h

Additional product data

Base (standard designation)	RX7s-24
Design / version	Clear
Lamp mercury content	16.7 mg

Capabilities

Dimmable	No
Burning position	p45
Enclosed luminaire required	Yes
Hot restart	Yes

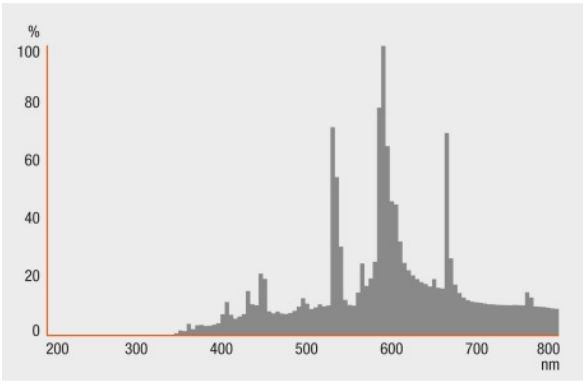
Certificates & standards

Energy efficiency class	A
Energy consumption	165 kWh/1000h

Country specific categorizations

ILCOS	MD/UB-150/730-H/E/SL-RX7s=24-23/135/H
-------	---------------------------------------

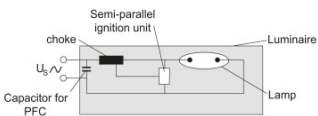
Light Distribution



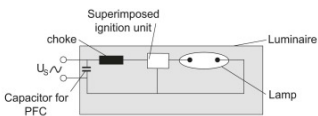
Spectral power distribution

System guarantee

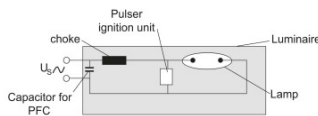
For the vast majority of our lamps we are offering an extended system guarantee in conjunction with OSRAM POWERTRONIC control gear.



Circuit diagram

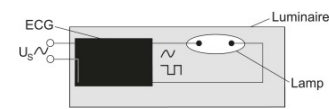


Circuit diagram



Circuit diagram

Product datasheet



Circuit diagram

Logistical Data

Product code	Product description	Packaging unit (Pieces/Unit)	Dimensions (length x width x height)	Volume	Gross weight
4008321678362	HQI-TS 150 W/WDL	Shipping carton box 12	154 mm x 159 mm x 123 mm	3.01 dm ³	498.00 g

The mentioned product code describes the smallest quantity unit which can be ordered. One shipping unit can contain one or more single products. When placing an order, for the quantity please enter single or multiples of a shipping unit.

References / Links

For more information on the system guarantee and the terms and conditions of the guarantee visit

► www.osram.com/system-guarantee

Disclaimer

Subject to change without notice. Errors and omission excepted. Always make sure to use the most recent release.