

HQI-TS 2000 W/N/L

POWERSTAR HQI-TS | Long arc, no outer bulb for enclosed luminaires



Areas of application

- Sports stadiums and floodlight systems
- Industrial installations
- Airports
- Docks and port facilities
- Marshaling yards, container transshipment facilities
- Approved only for use in enclosed luminaires
- Outdoor applications only in suitable luminaires

Product benefits

- Very high efficiency
- Very high luminous flux
- Long lifetime
- May be operated on conventional igniters and control gear
- Ideal for compact floodlights
- Good positioning thanks to K12s base

Product features

- POWERSTAR quartz technology



Technical data

Electrical data

Nominal wattage	2000.00 W
Rated wattage	2150.00 W
Lamp current	10.4 A
PFC capacitor at 50 Hz	60 µF ¹⁾
Nominal voltage	200 V
Ignition voltage	4.0 / 36 kVp ²⁾
Rated lamp efficacy (standard condition)	107 lm/W
Rated luminous flux	230000 lm

¹⁾ At rated voltage and cos φ ≥ 0.9

²⁾ Minimum / Maximum

Photometrical data

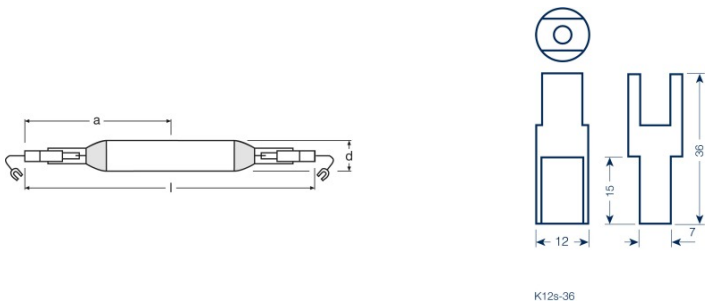
Color rendering index Ra	65
Color temperature	4100 K
Light color	642
Rated LLMF at 2,000 h	0.91
Rated LLMF at 4,000 h	0.85
Rated LLMF at 6,000 h	0.82
Rated LLMF at 8,000 h	0.80
UV protection	No

Light technical data

Starting time	120 s ¹⁾
---------------	---------------------

¹⁾ Maximum

Dimensions & weight



Product datasheet

Diameter	40.0 mm
Length	274.0 mm
Light center length (LCL)	137.0 mm
Product weight	88.70 g

Temperatures & operating conditions

Maximum permitted outer bulb temperature	950 °C
Maximum permitted pinch temperature	390 °C

Lifespan

Rated lamp survival factor at 2,000 h	0.95
Rated lamp survival factor at 4,000 h	0.83
Rated lamp survival factor at 6,000 h	0.67
Rated lamp survival factor at 8,000 h	0.50
Lifespan B50	8000 h

Additional product data

Base (standard designation)	K12s-36
Design / version	Clear
Lamp mercury content	220.0 mg

Capabilities

Dimmable	No
Burning position	p15
Enclosed luminaire required	Yes
Hot restart	Yes

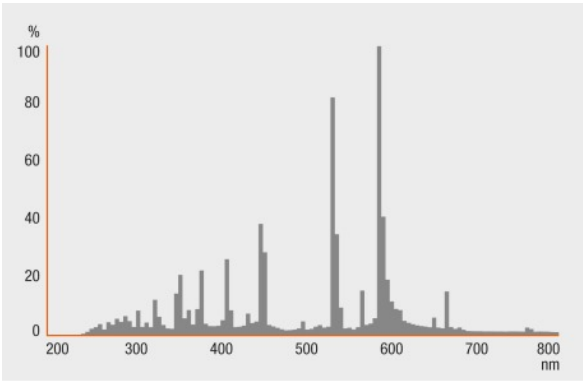
Certificates & standards

Energy efficiency class	A+
Energy consumption	2365 kWh/1000h

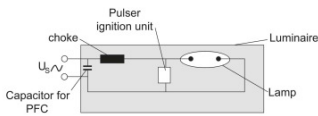
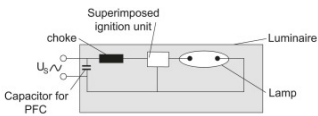
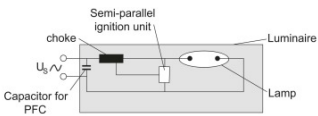
Country specific categorizations

ILCOS	MN-2000/842-E/E/SL-K12s=36-40/274/H
-------	-------------------------------------

Light Distribution



Spectral power distribution



Circuit diagram

Circuit diagram

Circuit diagram

Logistical Data

Product code	Product description	Packaging unit (Pieces/Unit)	Dimensions (length x width x height)	Volume	Gross weight
4008321530660	HQI-TS 2000 W/N/L	Shipping carton box 10	391 mm x 164 mm x 336 mm	21.55 dm ³	2100.36 g

The mentioned product code describes the smallest quantity unit which can be ordered. One shipping unit can contain one or more single products. When placing an order, for the quantity please enter single or multiples of a shipping unit.

Disclaimer

Subject to change without notice. Errors and omission excepted. Always make sure to use the most recent release.