

HQI-E 250 W/D PRO

POWERSTAR HQI-E coated | Metal halide lamps with quartz technology for enclosed luminaires



Areas of application

- Factories and workshops
- Exhibition halls and trade fairs
- Sports halls and multi-purpose halls
- Approved only for use in enclosed luminaires
- Outdoor applications only in suitable luminaires

Product benefits

- Long lifetime
- E40 screw base for simple lamp handling
- UV values significantly below the maximum permitted thresholds to IEC 61167 thanks to UV filter

Product features

- POWERSTAR quartz technology
- Light colors: neutral white (NDL), daylight (D)



Technical data

Electrical data

Nominal wattage	250.00 W
Rated wattage	250.00 W
Lamp current	3.0 A
PFC capacitor at 50 Hz	32 µF ¹⁾
Nominal voltage	105 V
Ignition voltage	4.0 / 5.0 kVp ²⁾
Rated lamp efficacy (standard condition)	72 lm/W
Rated luminous flux	18000 lm

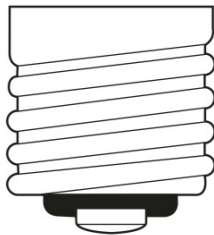
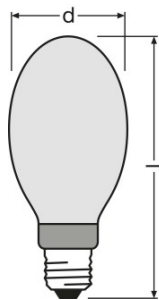
¹⁾ At rated voltage and cos φ ≥ 0.9

²⁾ Minimum / Maximum

Photometrical data

Color rendering index Ra	92
Color temperature	5200 K
Light color	960
Rated LLMF at 2,000 h	0.84
Rated LLMF at 4,000 h	0.76
Rated LLMF at 6,000 h	0.74
Rated LLMF at 8,000 h	0.72
Rated LLMF at 12,000 h	0.68
UV protection	Yes

Dimensions & weight



E40
IEC 7004-24
DIN 49625

Diameter	90.0 mm
Length	226.0 mm
Product weight	170.00 g

Product datasheet

Temperatures & operating conditions

Maximum permitted outer bulb temperature	400 °C
Maximum permitted base edge temperature	250 °C

Lifespan

Rated lamp survival factor at 2,000 h	0.95
Rated lamp survival factor at 4,000 h	0.90
Rated lamp survival factor at 6,000 h	0.80
Rated lamp survival factor at 8,000 h	0.70
Rated lamp survival factor at 12,000 h	0.50
Lifespan B50	12000 h

Additional product data

Base (standard designation)	E40
Design / version	Coated
Lamp mercury content	18.0 mg

Capabilities

Dimmable	No
Burning position	Any ¹⁾
Enclosed luminaire required	Yes

¹⁾ Color shifts possible in base-down burning position

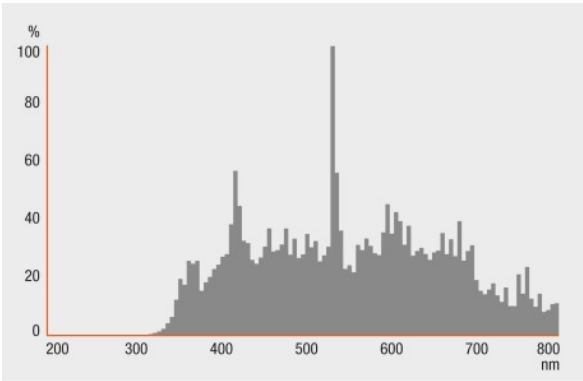
Certificates & standards

Energy efficiency class	A
Energy consumption	275 kWh/1000h

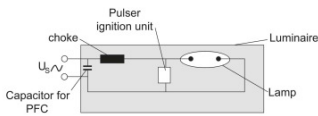
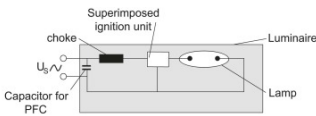
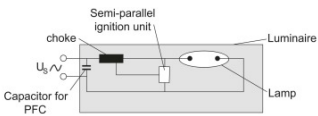
Country specific categorizations

ILCOS	ME/UB-250/952-H/E/SL-E40-91/226
-------	---------------------------------

Light Distribution



Spectral power distribution



Circuit diagram

Circuit diagram

Circuit diagram

Logistical Data

Product code	Product description	Packaging unit (Pieces/Unit)	Dimensions (length x width x height)	Volume	Gross weight
4008321677907	HQI-E 250 W/D PRO	Shipping carton box 12	426 mm x 252 mm x 331 mm	35.53 dm ³	2879.00 g
4052899199040	HQI-E 250 W/D PRO	Shipping carton box 12	426 mm x 331 mm x 252 mm	35.53 dm ³	2879.00 g

Product datasheet

The mentioned product code describes the smallest quantity unit which can be ordered. One shipping unit can contain one or more single products. When placing an order, for the quantity please enter single or multiples of a shipping unit.

Disclaimer

Subject to change without notice. Errors and omission excepted. Always make sure to use the most recent release.