

## HQI-T 250 W/D PRO

POWERSTAR HQI-T | Metal halide lamps with quartz technology for enclosed luminaires



### Areas of application

- Factories and workshops
- Sports halls and multi-purpose halls
- Industrial installations
- Docks and port facilities
- Marshaling yards, container transshipment facilities
- Buildings, monuments, bridges
- Approved only for use in enclosed luminaires
- Outdoor applications only in suitable luminaires

### Product benefits

- Output of up to 400 W
- High efficiency
- Long lifetime
- E40 screw base for simple lamp handling
- UV values significantly below the maximum permitted thresholds to IEC 61167 thanks to UV filter

### Product features

- POWERSTAR quartz technology
- Light colors: neutral white (N), daylight (D)



Technical data

Electrical data

Nominal wattage	250.00 W
Rated wattage	250.00 W
Lamp current	3.0 A
PFC capacitor at 50 Hz	32 µF <sup>1)</sup>
Nominal voltage	98.0 V
Ignition voltage	4.0 / 5.0 kVp <sup>2)</sup>
Rated lamp efficacy (standard condition)	76 lm/W
Rated luminous flux	19000 lm

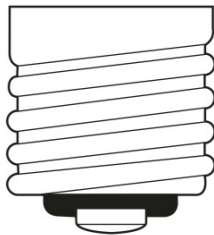
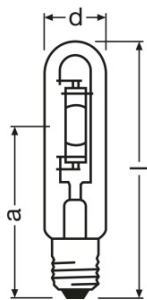
<sup>1)</sup> At rated voltage and cos φ ≥ 0.9

<sup>2)</sup> Minimum / Maximum

Photometrical data

Color rendering index Ra	92
Color temperature	5500 K
Light color	960
Rated LLMF at 2,000 h	0.84
Rated LLMF at 4,000 h	0.76
Rated LLMF at 6,000 h	0.74
Rated LLMF at 8,000 h	0.72
Rated LLMF at 12,000 h	0.68
UV protection	Yes

Dimensions & weight



E40  
IEC 7004-24  
DIN 49625

Diameter	46.0 mm
Length	226.0 mm
Light center length (LCL)	150.0 mm

## Product datasheet

Product weight	150.00 g
----------------	----------

### Temperatures & operating conditions

Maximum permitted outer bulb temperature	500 °C
Maximum permitted base edge temperature	250 °C

### Lifespan

Rated lamp survival factor at 2,000 h	0.95
Rated lamp survival factor at 4,000 h	0.90
Rated lamp survival factor at 6,000 h	0.80
Rated lamp survival factor at 8,000 h	0.70
Rated lamp survival factor at 12,000 h	0.50
Lifespan B50	12000 h

### Additional product data

Base (standard designation)	E40
Design / version	Clear
Lamp mercury content	18.0 mg

### Capabilities

Dimmable	No
Burning position	Any <sup>1)</sup>
Enclosed luminaire required	Yes

<sup>1)</sup> Color shifts possible in base-down burning position

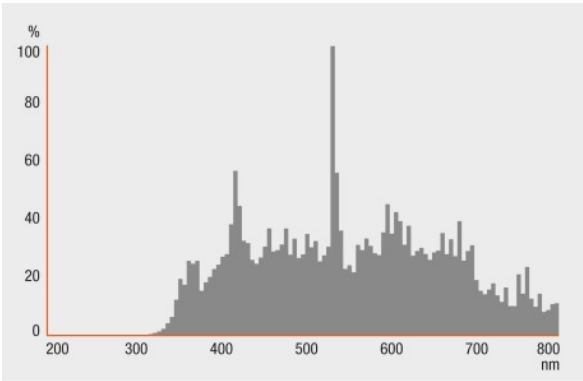
### Certificates & standards

Energy efficiency class	A
Energy consumption	275 kWh/1000h

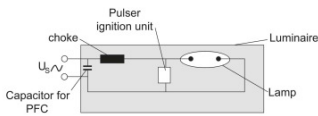
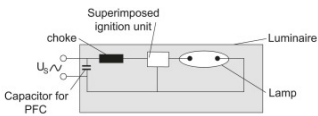
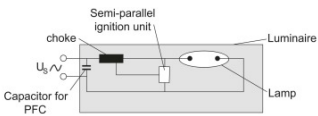
### Country specific categorizations

ILCOS	MT/UB-250/952-H/E/SL-E40-46/226
-------	---------------------------------

Light Distribution



Spectral power distribution



Circuit diagram

Circuit diagram

Circuit diagram

Logistical Data

Product code	Product description	Packaging unit (Pieces/Unit)	Dimensions (length x width x height)	Volume	Gross weight
4008321677846	HQI-T 250 W/D PRO	Shipping carton box 12	277 mm x 281 mm x 217 mm	16.89 dm <sup>3</sup>	2304.00 g
4052899199064	HQI-T 250 W/D PRO	Shipping carton box 12	266 mm x 216 mm x 277 mm	15.92 dm <sup>3</sup>	2478.00 g

## Product datasheet

The mentioned product code describes the smallest quantity unit which can be ordered. One shipping unit can contain one or more single products. When placing an order, for the quantity please enter single or multiples of a shipping unit.

---

### Disclaimer

Subject to change without notice. Errors and omission excepted. Always make sure to use the most recent release.