

## HQI-T 400 W/N

POWERSTAR HQI-T | Metal halide lamps with quartz technology for enclosed luminaires



### Areas of application

- Factories and workshops
- Sports halls and multi-purpose halls
- Industrial installations
- Docks and port facilities
- Marshaling yards, container transshipment facilities
- Buildings, monuments, bridges
- Approved only for use in enclosed luminaires
- Outdoor applications only in suitable luminaires

### Product benefits

- Output of up to 400 W
- High efficiency
- Long lifetime
- E40 screw base for simple lamp handling
- UV values significantly below the maximum permitted thresholds to IEC 61167 thanks to UV filter

### Product features

- POWERSTAR quartz technology
- Light colors: neutral white (N), daylight (D)



# Product datasheet

## Technical data

### Electrical data

Nominal wattage	400.00 W
Rated wattage	448.00 W
Lamp current	3.9 A
PFC capacitor at 50 Hz	45 $\mu$ F <sup>1)</sup>
Nominal voltage	126 V
Ignition voltage	4.0 / 5.0 kVp <sup>2)</sup>
Rated lamp efficacy (standard condition)	90 lm/W
Rated luminous flux	40000 lm

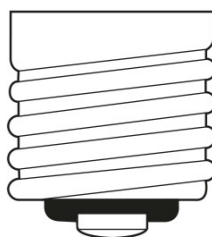
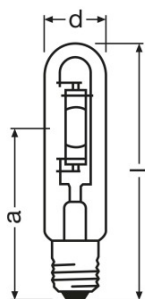
<sup>1)</sup> At rated voltage and  $\cos \varphi \geq 0.9$

<sup>2)</sup> Minimum / Maximum

### Photometrical data

Color rendering index Ra	62
Color temperature	3700 K
Light color	642
Rated LLMF at 2,000 h	0.85
Rated LLMF at 4,000 h	0.79
Rated LLMF at 6,000 h	0.68
Rated LLMF at 8,000 h	0.65
Rated LLMF at 12,000 h	0.62
UV protection	Yes

### Dimensions & weight



E40  
IEC 7004-24  
DIN 49625

Diameter	46.0 mm
Length	273.0 mm
Light center length (LCL)	175.0 mm

## Product datasheet

Product weight	179.40 g
----------------	----------

### Temperatures & operating conditions

Maximum permitted outer bulb temperature	500 °C
Maximum permitted base edge temperature	250 °C

### Lifespan

Rated lamp survival factor at 2,000 h	0.99
Rated lamp survival factor at 4,000 h	0.98
Rated lamp survival factor at 6,000 h	0.93
Rated lamp survival factor at 8,000 h	0.83
Rated lamp survival factor at 12,000 h	0.50
Lifespan B50	12000 h

### Additional product data

Base (standard designation)	E40
Product remark	With NAV control gear
Design / version	Clear
Lamp mercury content	52.0 mg

### Capabilities

Dimmable	No
Burning position	p45
Enclosed luminaire required	Yes

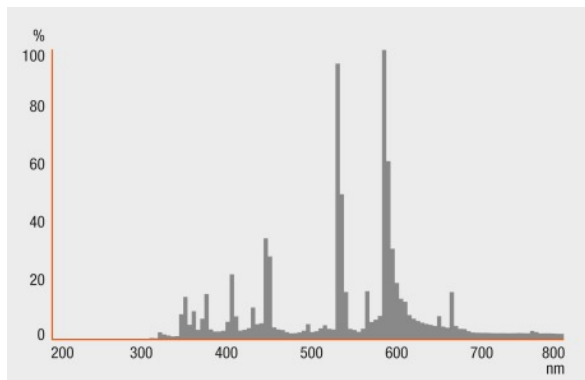
### Certificates & standards

Energy efficiency class	A+
Energy consumption	493 kWh/1000h

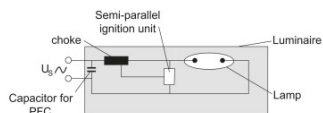
### Country specific categorizations

ILCOS	MT/UB-400/742-H/E/SL-E40-46/273/H
-------	-----------------------------------

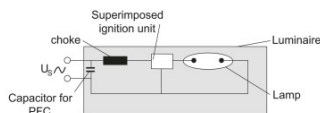
**Light Distribution**



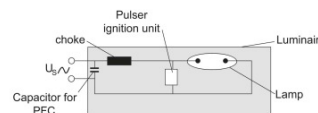
Spectral power distribution



Circuit diagram



Circuit diagram



Circuit diagram

Logistical Data

Product code	Product description	Packaging unit (Pieces/Unit)	Dimensions (length x width x height)	Volume	Gross weight
4008321526786	HQI-T 400 W/N	Shipping carton box 12	263 mm x 341 mm x 214 mm	19.19 dm <sup>3</sup>	3007.00 g

The mentioned product code describes the smallest quantity unit which can be ordered. One shipping unit can contain one or more single products. When placing an order, for the quantity please enter single or multiples of a shipping unit.

## Product datasheet

---

### Disclaimer

Subject to change without notice. Errors and omission excepted. Always make sure to use the most recent release.