

## HQI-TS 2000 W/D/S

POWERSTAR HQI-TS | Short arc, no outer bulb for enclosed luminaires



### Areas of application

- Sports stadiums and floodlight systems
- Sports halls and multi-purpose halls
- Airports
- Solar simulation, material testing
- Approved only for use in enclosed luminaires
- Outdoor applications only in suitable luminaires

### Product benefits

- High efficiency
- Good to excellent color rendering
- Excellent color stability
- Small loss of luminous flux over the life of the lamp
- Hot restrike capable
- Compact dimensions for small spotlights
- Good positioning thanks to K12s base

### Product features

- POWERSTAR quartz technology
- Light colors: neutral white (NDL), daylight (D)



# Product datasheet

## Technical data

### Electrical data

Nominal wattage	2000.00 W
Rated wattage	1950.00 W
Lamp current	11.3 A
PFC capacitor at 50 Hz	60 $\mu$ F <sup>1)</sup>
Nominal voltage	190 V
Ignition voltage	4.0 / 36 kVp <sup>2)</sup>
Rated lamp efficacy (standard condition)	108 lm/W
Rated luminous flux	210000 lm

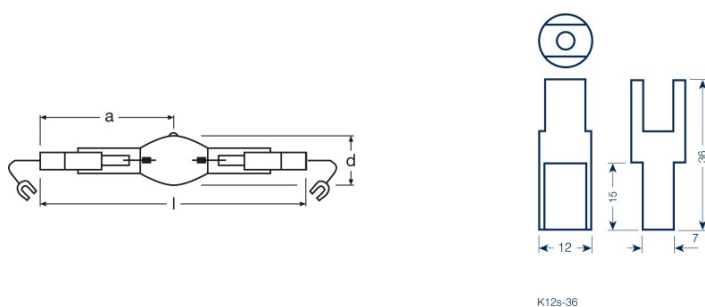
<sup>1)</sup> At rated voltage and  $\cos \varphi \geq 0.9$

<sup>2)</sup> Minimum / Maximum

### Photometrical data

Color rendering index Ra	83
Color temperature	6100 K
Light color	860
Rated LLMF at 2,000 h	0.95
Rated LLMF at 4,000 h	0.90
UV protection	No

### Dimensions & weight



Diameter	41.0 mm
Length	187.0 mm
Light center length (LCL)	93.0 mm
Product weight	61.00 g

### Temperatures & operating conditions

## Product datasheet

Maximum permitted outer bulb temperature	950 °C
Maximum permitted pinch temperature	390 °C

### Lifespan

Rated lamp survival factor at 2,000 h	0.94
Rated lamp survival factor at 4,000 h	0.61
Lifespan B50	4500 h

### Additional product data

Base (standard designation)	K12s-36
Design / version	Clear
Lamp mercury content	180.0 mg

### Capabilities

Dimmable	No
Burning position	p15
Enclosed luminaire required	Yes
Hot restart	Yes

### Certificates & standards

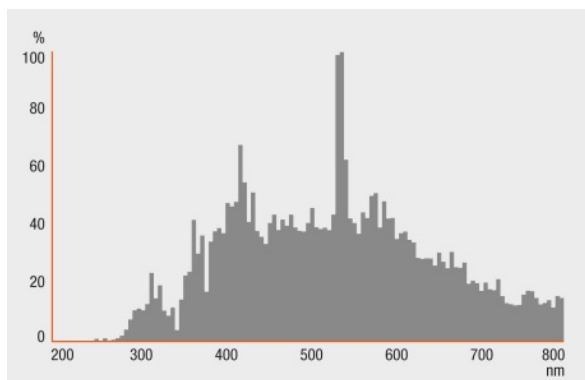
Energy efficiency class	A+
Energy consumption	2145 kWh/1000h

### Country specific categorizations

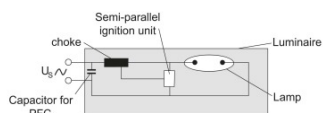
ILCOS	MN-2000/961-E/E/SL-K12s=36-41/187/H
-------	-------------------------------------

# Product datasheet

## Light Distribution



## Spectral power distribution



## Circuit diagram

## Logistical Data

Product code	Product description	Packaging unit (Pieces/Unit)	Dimensions (length x width x height)	Volume	Gross weight
4050300271682	HQI-TS 2000 W/D/S	Shipping carton box 10	395 mm x 265 mm x 163 mm	17.06 dm <sup>3</sup>	1436.00 g

The mentioned product code describes the smallest quantity unit which can be ordered. One shipping unit can contain one or more single products. When placing an order, for the quantity please enter single or multiples of a shipping unit.

## Product datasheet

---

### Disclaimer

Subject to change without notice. Errors and omission excepted. Always make sure to use the most recent release.