

## L 4 W/640

Basic T5 Short | Tubular fluorescent lamps 16 mm, short, with G5 base



### Areas of application

- Shops
- Supermarkets and department stores
- Public buildings

### Product benefits

- Ideal for cost-effective creative illumination and decoration
- Very good luminous flux maintenance throughout the life of the lamp
- Slim and compact

### Product features

- Average lifetime: up to 10,000 h (with QUICKTRONIC ECG)



Technical data

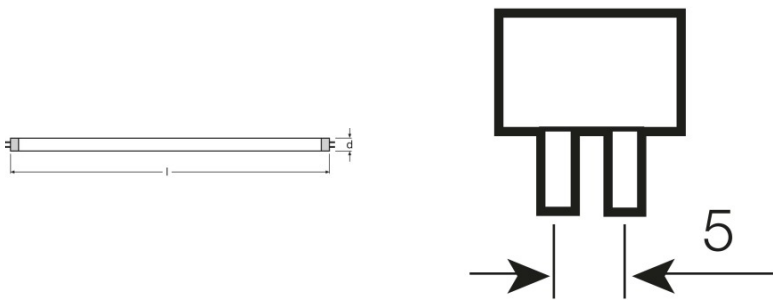
Electrical data

Nominal wattage	4.00 W
Rated lamp efficacy (HF data 25 °C)	Under clarification by authority and standardization body
Rated wattage	4.00 W

Photometrical data

Color rendering index Ra	≥60
Luminous flux at 25 °C	140 lm
Light color	640
Light color (designation)	Cool White

Dimensions & weight



Tube diameter	16 mm
Length	136.0 mm
Length with base excl. base pins/connection	136.00 mm
Diameter	16.0 mm

Lifespan

Lifespan	8000 h <sup>1)</sup>
Rated lamp life time	5000 h
Nominal lamp life time	5000 h

<sup>1)</sup> With CCG/LLCG

Additional product data

Base (standard designation)	G5
Lamp mercury content	2.5 mg

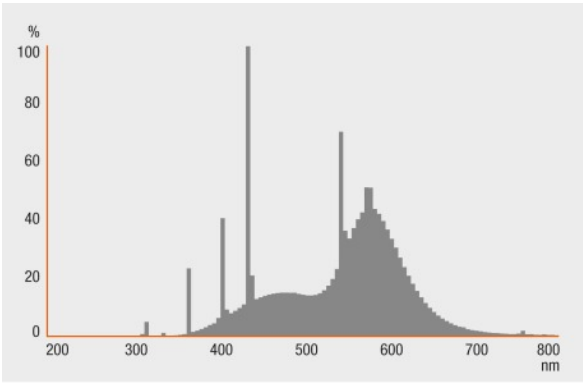
Product datasheet

Appropriate disposal acc. to WEEE	Yes
-----------------------------------	-----

Certificates & standards

Energy efficiency class	B
Energy consumption	5 kWh/1000h

Light Distribution



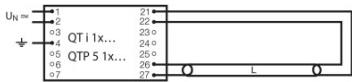
Spectral power distribution

System guarantee

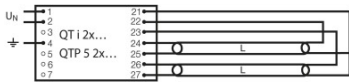
OSRAM System+ Guarantee in combination with OSRAM ECGs

Safety advice

In case of lamp breakage: [www.osram.com/brokenlamp](http://www.osram.com/brokenlamp)



Circuit diagram



Circuit diagram

Logistical Data

Product code	Product description	Packaging unit (Pieces/Unit)	Dimensions (length x width x height)	Volume	Gross weight
4008321025036	L 4 W/640	Shipping carton box 10	166 mm x 51 mm x 119 mm	1.01 dm <sup>3</sup>	267.00 g
4050300008875	L 4 W/640	Shipping carton box 25	168 mm x 124 mm x 106 mm	2.21 dm <sup>3</sup>	525.00 g

The mentioned product code describes the smallest quantity unit which can be ordered. One shipping unit can contain one or more single products. When placing an order, for the quantity please enter single or multiples of a shipping unit.

References / Links

For more information on QUICKTRONIC electronic control gear go to  
▶ [www.osram.com/QUICKTRONIC](http://www.osram.com/QUICKTRONIC)

Disclaimer

Subject to change without notice. Errors and omission excepted. Always make sure to use the most recent release.

---

## L 4 W/640

Basic T5 Short | Tubular fluorescent lamps 16 mm, short, with G5 base

Product name	Product name ECG	EAN	Nominal current	Nominal wattage + Power loss	Luminous flux at 35 °C	Number of lighting outlets
L 4 W/640	QT-ECO 1x4-16/220-240 L	4050300660370	0.05 A	6.50 W	120 lm	1
	QT-ECO 1x4-16/220-240 S	4050300638584	0.05 A	6.50 W	120 lm	1