

MSR Gold™ SA Double Ended



MSR Gold™ 575 SA/2 DE 1CT/40

To optimize the total lifetime of the double ended MSR Gold™ SA Double Ended lamps, the caps are plated with gold. This provides superior heat protection and thereby minimizes premature failure of the lamp and lamp holder, as well as ensuring extended consistent performance. In addition, the highly innovative P3 technology, developed by Philips, allows the lamp to be used at higher temperatures, which further extends service life and consistency of high-quality light output.

Product data

• General Information

| | |
|----------------------------|-----------------------------------|
| Cap-Base | SFC-11 [SFC-11] |
| Operating Position | UNIVERSAL [Any or Universal (U)] |
| Main Application | Entertainment |
| Life To 50% Failures (Nom) | 750 h |
| System Description | SA/2 DE |

• Light Technical

| | |
|------------------------------------|----------|
| Color Code | 2 |
| Luminous Flux (Min) | 39000 lm |
| Luminous Flux (Nom) | 42000 lm |
| Chromaticity Coordinate X (Nom) | 294 |
| Chromaticity Coordinate Y (Nom) | 317 |
| Correlated Color Temperature (Nom) | 7500 K |
| Luminous Efficacy (rated) (Nom) | 73 lm/W |
| Color Rendering Index (Nom) | 75 |

• Operating and Electrical

| | |
|---------------------|-------|
| Power (Rated) (Nom) | 575 W |
|---------------------|-------|

| | |
|-------------------------------|-------|
| Lamp Current (Nom) | 7 A |
| Ignition Supply Voltage (Min) | 198 V |

• Controls and Dimming

| | |
|----------|----|
| Dimmable | No |
|----------|----|

• Mechanical and Housing

| | |
|----------------------|--------|
| Cap-Base Information | SFC-11 |
|----------------------|--------|

• Luminaire Design Requirements

| | |
|-------------------------|--------|
| Pinch Temperature (Max) | 400 °C |
|-------------------------|--------|

• Product Data

| | |
|---------------------------------|------------------------------|
| Full product code | 872790091464100 |
| Order product name | MSR Gold™ 575 SA/2 DE 1CT/40 |
| EAN/UPC - Product | 8727900914641 |
| Order code | 928175105114 |
| Numerator - Quantity Per Pack | 1 |
| Numerator - Packs per outer box | 40 |
| Material Nr. (12NC) | 928175105114 |
| Net Weight (Piece) | 0.032 kg |

PHILIPS

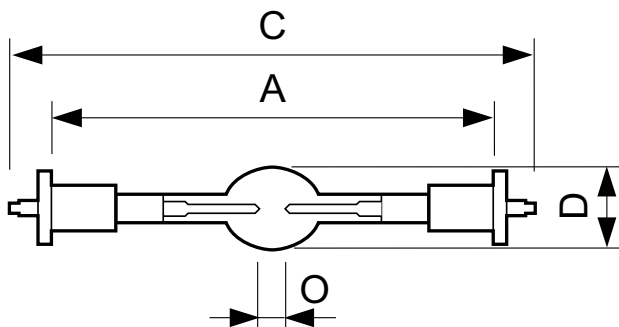
MSR Gold™ SA Double Ended

Warnings and Safety

- A lamp breaking is extremely unlikely to have any impact on your health. If a lamp breaks, ventilate the room for 30 minutes and

remove the parts, preferably with gloves. Put them in a sealed plastic bag and take it to your local waste facilities for recycling. Do not use a vacuum cleaner.

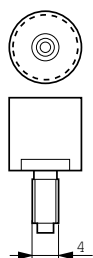
Dimensional drawing



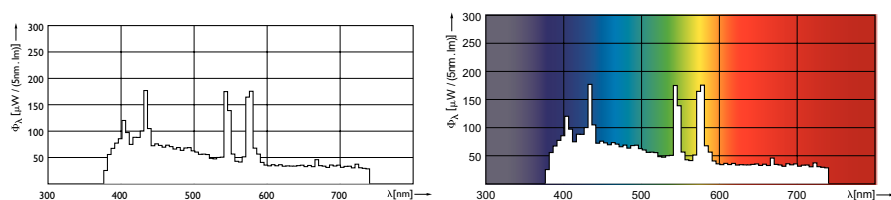
MSR Gold™ SA/DE

MSR GOLD 575 SA/2 DE

| Product | D | O | A | A | A | C |
|------------------------------|---------|--------|---------|---------|-------|-------|
| MSR Gold™ 575 SA/2 DE 1CT/40 | 18.5 mm | 5.0 mm | 69.6 mm | 70.4 mm | 70 mm | 92 mm |



Photometric data



© 2015 Philips Lighting Holding B.V.
All rights reserved.

Specifications are subject to change without notice. Trademarks are the property of Koninklijke Philips N.V. (Royal Philips) or their respective owners.

www.philips.com/lighting

2015, December 23
data subject to change