

# TUV T5

## TUV 64T5 HE SP UNP/32

TUV T5 lamps are single- or double-ended UV-C 253.7 nm emitting lamps. The small 16 mm diameter of the lamp allows for a small system design and design flexibility. TUV T5 lamps offer constant UV output over their complete lifetime.

### Warnings and Safety

- A lamp breaking is extremely unlikely to have any impact on your health. If a lamp breaks, ventilate the room for 30 minutes and remove the parts, preferably with gloves. Put them in a sealed plastic bag and take it to your local waste facilities for recycling. Do not use a vacuum cleaner.
- DANGER: Risk Group 3 Ultra Violet product. These lamps emit high-power UV radiation that can cause severe injury to skin and eyes. Avoid eye and skin exposure to unshielded product. Use only in an enclosed environment which shields users from the radiation.
- Plants and/or materials that are exposed to UV-C and/or ozone for a long time may become damaged and/or discolored.

### Product data

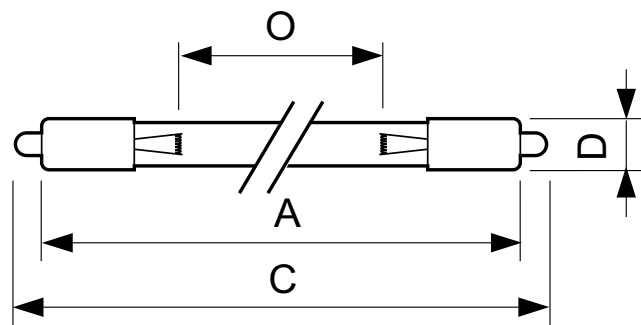
General Information		Mechanical and Housing	
Cap-Base	SINGLEPIN [Single Pin]	Bulb Shape	T16 [T 16mm]
Useful Life (Nom)	9,000 hour(s)	Approval and Application	
Light Technical		Mercury (Hg) Content (Nom)	3.0 mg
Color Code	TUV	UV	
Color Designation	- [Not Specified]	UV-C Radiation at 100 hr	32.7 W
Depreciation at Useful Lifetime	20 %	Product Data	
Operating and Electrical		Full product code	871150064079699
Power Consumption	75 W	Order product name	TUV 64T5 HE SP UNP/32
Lamp Current (Nom)	0.425 A	Order code	927970504099
Voltage (Nom)	178 V	Numerator - Quantity Per Pack	1
Voltage (Nom)	178 V	Numerator - Packs per outer box	32

TUV T5

Material Nr. (12NC)	927970504099
Full product name	TUV 64T5 HE SP UNP/32
EAN/UPC - Case	8711500640802

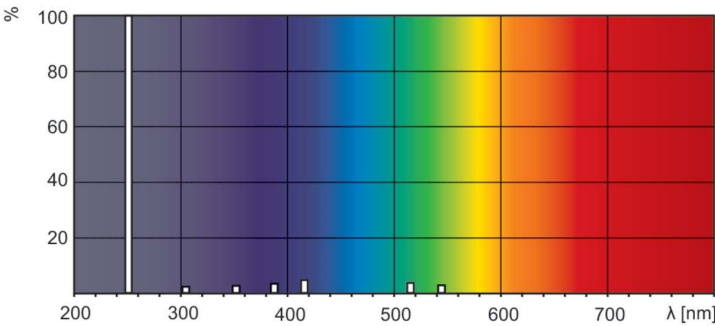
EAN/UPC - Product/Case	8711500640796
------------------------	---------------

Dimensional drawing



Product	D (max)	O	C (max)	A (max)
TUV 64T5 HE SP UNP/32	18.6 mm	1,473 mm	1,575.1 mm	1,556.6 mm

Photometric data



Spectral Power Distribution Colour - TUV 64T5 HE SP UNP/32

