
Emergency Lighting 6 W/640

Basic T5 Short EL | Tubular fluorescent lamps 16 mm, short, for emergency lighting, with G5 base



Areas of application

- Public buildings
- Industry
- Shops
- Supermarkets and department stores

Product benefits

- Very good luminous flux maintenance throughout the life of the lamp
- Optimized for emergency power operation
- Slim and compact

Product features

- Suitable for emergency power operation



Product datasheet

Technical data

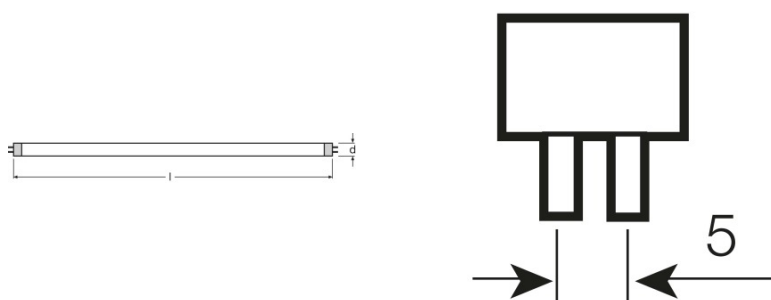
Electrical data

Nominal wattage	6.00 W
Rated lamp efficacy (HF data 25 °C)	Under clarification by authority and standardization body
Rated lamp efficacy (standard condition)	45 lm/W
Rated wattage	6.00 W
Rated luminous flux	270 lm

Photometrical data

Color rendering index Ra	≥60
Luminous flux at 25 °C	270 lm
Light color	640
Color temperature	4000 K
Nominal luminous flux	270 lm
Light color (designation)	Cool White
Rated LLMF at 2,000 h	0.75
Rated LLMF at 4,000 h	0.69
Rated LLMF at 6,000 h	0.66
Rated LLMF at 8,000 h	0.64

Dimensions & weight



Tube diameter	16 mm
Length	212.1 mm
Length with base excl. base pins/connection	212.00 mm
Diameter	16.0 mm
Maximum diameter	16.0 mm

Product datasheet

Temperatures & operating conditions

Rated ambient temp.w.max.luminous flux	35.0 °C
--	---------

Lifespan

Lifespan	8000 h ¹⁾
Rated lamp survival factor at 2,000 h	0.99
Rated lamp survival factor at 4,000 h	0.99
Rated lamp survival factor at 6,000 h	0.95
Rated lamp survival factor at 8,000 h	0.81
Operation mode LLMF/LSF	HF
Rated lamp life time	10000 h
Nominal lamp life time	10000 h

¹⁾ With CCG/LLCG

Additional product data

Base (standard designation)	G5
Lamp mercury content	2.5 mg
Appropriate disposal acc. to WEEE	Yes

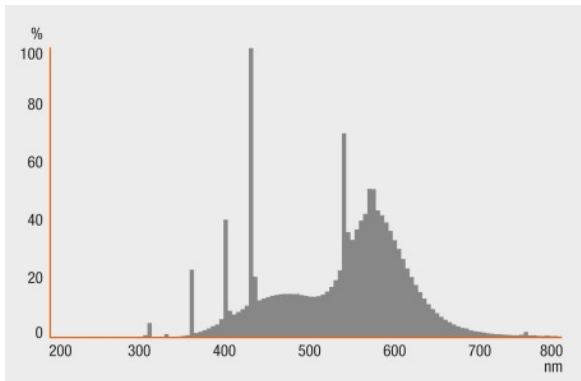
Capabilities

Suitable for indoor	Yes
---------------------	-----

Certificates & standards

Energy efficiency class	A
Energy consumption	7 kWh/1000h

Light Distribution



Spectral power distribution

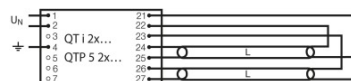
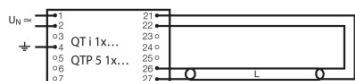
System guarantee

OSRAM System+ Guarantee in combination with OSRAM ECGs

Safety advice

In case of lamp breakage: www.osram.com/brokenlamp

Product datasheet



Circuit diagram

Circuit diagram

Logistical Data

Product code	Product description	Packaging unit (Pieces/Unit)	Dimensions (length x width x height)	Volume	Gross weight
4008321152381	Emergency Lighting 6 W/640	Shipping carton box 25	248 mm x 115 mm x 105 mm	2.99 dm ³	824.50 g

The mentioned product code describes the smallest quantity unit which can be ordered. One shipping unit can contain one or more single products. When placing an order, for the quantity please enter single or multiples of a shipping unit.

References / Links

For more information on QUICKTRONIC electronic control gear go to

- ▶ www.osram.com/QUICKTRONIC

Disclaimer

Subject to change without notice. Errors and omission excepted. Always make sure to use the most recent release.