



CorePro LED PLC 4P



CorePro LED PLC 9W 840 4P G24q-3

The CorePro LED PLC 4P integrates a LED light source into a traditional fluorescent form factor. This product is the ideal solution for uplamping in general lighting applications: it meets basic lighting requirements, offers significant energy savings, and is environmentally friendly.

Product data

General Information	
Cap-Base	G24Q-3 [G24q-3]
Nominal lifetime	30,000 hour(s)
Switching Cycle	50,000
Lighting Technology	LED
Flux measurement reference	Sphere
CE mark	Yes
EU RoHS compliant	Yes

Light Technical	
Color Code	840 [CCT of 4000K]
Beam Angle (Nom)	120 degree(s)
Luminous Flux	1,000 lumen
Color Designation	Cool White (CW)
Correlated Color Temperature (Nom)	4000 K
Luminous Efficacy (rated) (Nom)	100.00 lm/W
Color Consistency	<6
Color rendering index (CRI)	83
LLMF At End Of Nominal Lifetime (Nom)	70 %
Photobiological safety according to EN 62471 RGO	

Operating and Electrical	
Line Frequency	30000-80000 Hz

Input Frequency	30000-80000 Hz
Power Consumption	9 W
Lamp Current (Max)	400 mA
Lamp Current (Min)	250 mA
Starting Time (Nom)	0.5 s
Warm-up time to 60% light	0.5 s
Power Factor (Fraction)	0.9
Voltage (Nom)	20-50 V
LED alternative to fluorescent lamp power	26 W

Temperature	
Ambient temperature range	-20 °C to 35 °C
T-Case Maximum (Nom)	76 °C

Controls and Dimming	
Dimmable	No

Mechanical and Housing	
Product Length	200 mm
Bulb Shape	Tube, single-ended

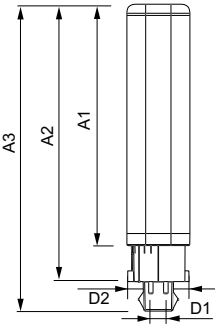
Approval and Application	
Energy Efficiency Class	F

CorePro LED PLC 4P

Energy Saving Product	Yes
Approval Marks	TUV CE marking RoHS compliance KEMA Keur certificate
Energy Consumption kWh/1000 h	9 kWh
EPREL Registration Number	403551
Product Data	
Full product code	871869654117300
Order product name	CorePro LED PLC 9W 840 4P G24q-3

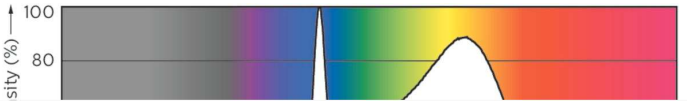
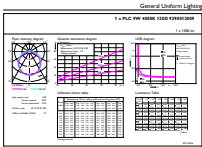
Order code	929001200902
Numerator - Quantity Per Pack	1
Numerator - Packs per outer box	10
Material Nr. (12NC)	929001200902
Full product name	CorePro LED PLC 9W 840 4P G24q-3
EAN/UPC - Case	8718696541180
EAN/UPC - Product/Case	8718696541173

Dimensional drawing



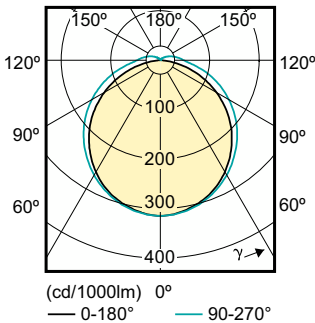
Product	D1	D2	A1	A2	A3
CorePro LED PLC 9W 840 4P G24q-3	24.3 mm	28.4 mm	128.8 mm	148 mm	163.6 mm

Photometric data



General uniform lighting - CorePro LED PLC 9W 840 4P G24q-3

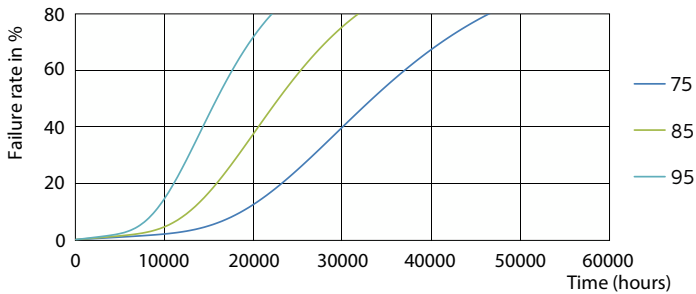
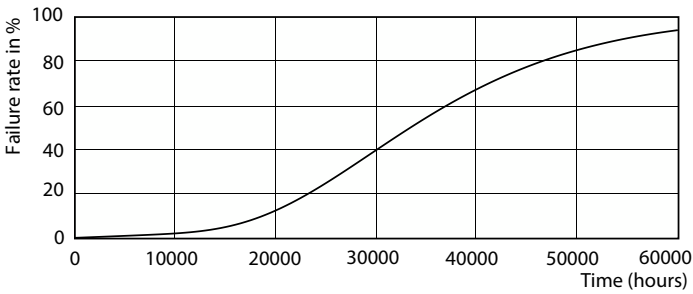
Spectral Power Distribution Colour - CorePro LED PLC 9W 840 4P G24q-3



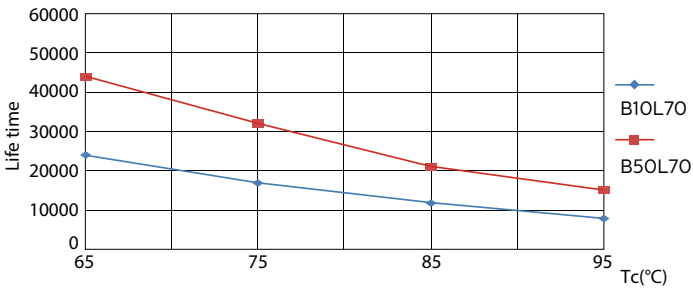
Light Distribution Diagram - CorePro LED PLC 9W 840 4P G24q-3

CorePro LED PLC 4P

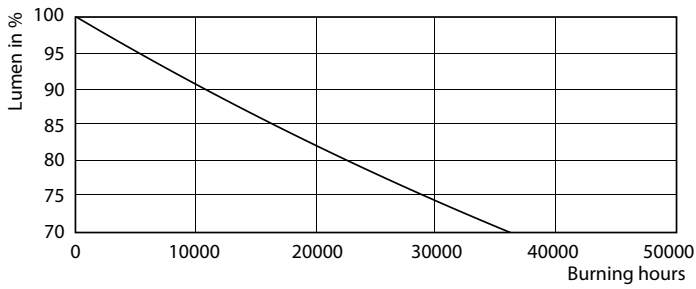
Lifetime



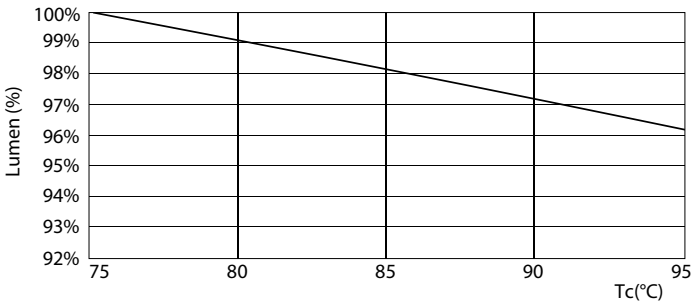
Life Expectancy Diagram - CorePro LED PLC 9W 840 4P G24q-3



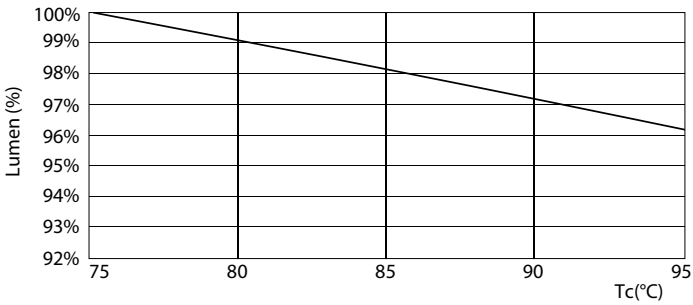
Life Expectancy Diagram - CorePro LED PLC 9W 840 4P G24q-3



Life Expectancy Diagram - CorePro LED PLC 9W 840 4P G24q-3



Lumen Maintenance Diagram - CorePro LED PLC 9W 840 4P G24q-3



Lumen Maintenance Diagram - CorePro LED PLC 9W 840 4P G24q-3

CorePro LED PLC 4P

