



# MASTER LEDtube EM/Mains T8

## MAS LEDtube 1200mm UE 14.5W 840 T8

The Philips MASTER LEDtube integrates a LED light source into a traditional fluorescent form factor. Its unique design creates a perfectly uniform visual appearance which cannot be distinguished from traditional fluorescent. For those that are looking for value for money within limited budget and re-lamping efforts for better light effect and lifetime.

### Product data

<b>General Information</b>		<b>Temperature</b>	
Cap-Base	G13 [ Medium Bi-Pin Fluorescent]	Lamp Current (Min)	56 mA
Nominal Lifetime (Nom)	60000 h	Starting Time (Nom)	0.5 s
Switching Cycle	200000X	Warm Up Time To 60% Light (Nom)	0.5 s
B50L70	60000 h	Power Factor (Nom)	0.9
<b>Light Technical</b>		Voltage (Nom)	220-240 V
Color Code	840 [ CCT of 4000K]	<b>Controls and Dimming</b>	
Luminous Flux (Nom)	2500 lm	Dimmable	No
Luminous Flux (Rated) (Nom)	2500 lm	<b>Mechanical and Housing</b>	
Correlated Color Temperature (Nom)	4000 K	Product Length	1200 mm
Color Consistency	<6		
Color Rendering Index (Nom)	83		
LLMF At End Of Nominal Lifetime (Nom)	70 %		
<b>Operating and Electrical</b>			
Input Frequency	50 to 60 Hz		
Power (Rated) (Nom)	14.5 W		
Lamp Current (Max)	74 mA		

MASTER LEDtube EM/Mains T8

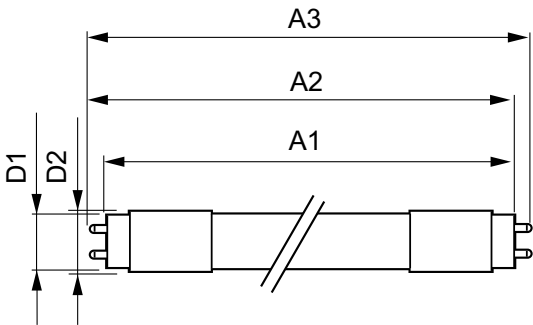
Approval and Application	
Energy Saving Product	Yes
Energy Efficiency Label (EEL)	A++
Approval Marks	TUV CE marking RoHS compliance KEMA Keur certificate
Energy Consumption kWh/1000 h	15 kWh
Product Data	
Full product code	871869673150500

Order product name	MAS LEDtube 1200mm UE 14.5W 840 T8
EAN/UPC - Product	8718696731505
Order code	929001376802
Numerator - Quantity Per Pack	1
Numerator - Packs per outer box	10
Material Nr. (12NC)	929001376802
Net Weight (Piece)	0.215 kg

Warnings and Safety

- NOTES: The overall energy efficiency and light distribution of any installation that uses these lamps are determined by the design of the installation.

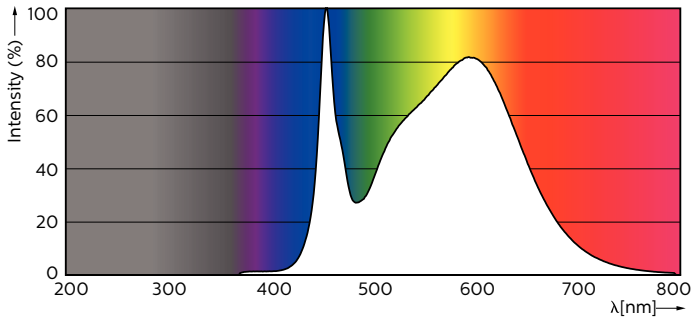
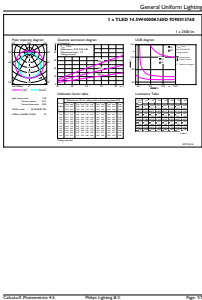
Dimensional drawing



TLED 4ft 14.5-36W 2500lm 4000K G13 ND

Product	D1	D2	A1	A2	A3
MAS LEDtube 1200mm UE 14.5W 840 T8	25.8 mm	28 mm	1198.2 mm	1205.3 mm	1212.4 mm

Photometric data



LEDtube 1200mm 15W G13 840 2500lm

## MASTER LEDtube EM/Mains T8

