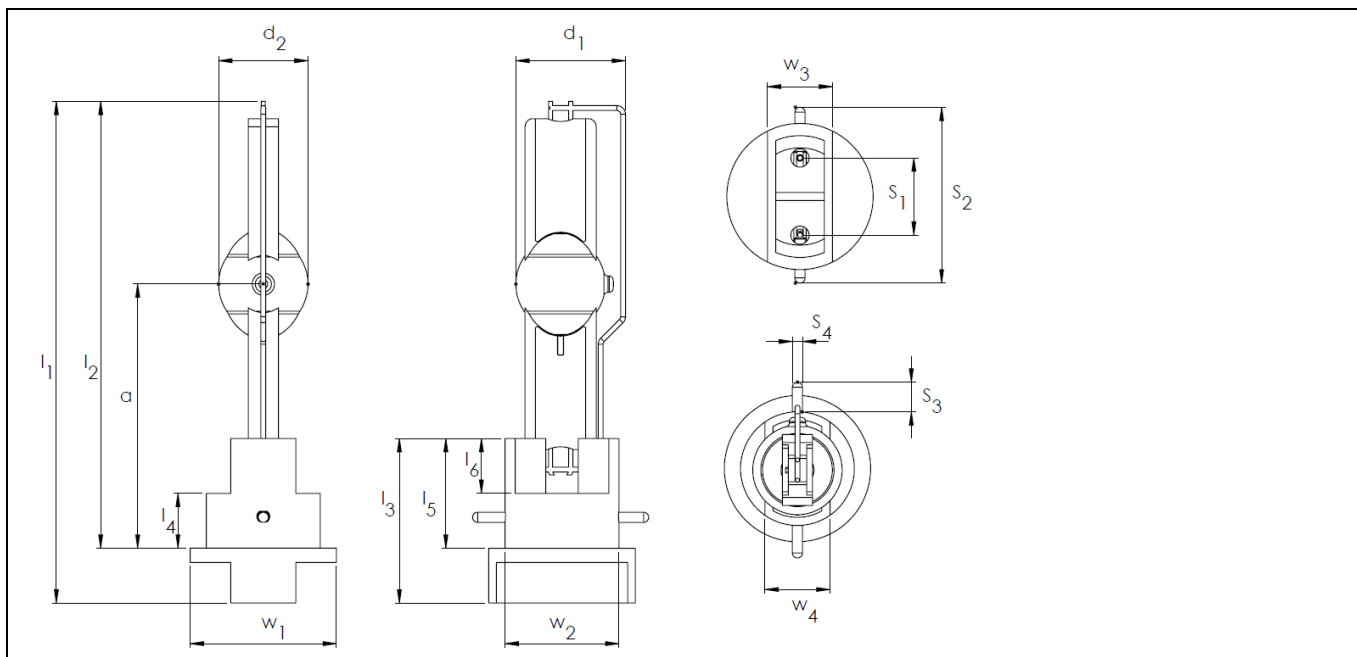




### ■ Product description

The OSRAM Lok-it® 1700/PS is a highly efficient, single-ended short-arc metal halide lamp with 6000 Kelvin colour temperature. The new Lok-it® plug'n'play system allows a quick one-touch lamp replacement. It is very compact and hence allows cold start of the lamp only. Featuring OSRAM's XS-Technology, the lamp stands pinch temperatures up to 450°C.



### ■ Technical data lamp

Order reference	Lok-it!®	1700/PS	Bulb diameter d <sub>2</sub>	mm	22
Ignition voltage	kV <sub>S</sub>	min. 5 / 10 (max.)	Bulb diameter d <sub>1</sub> (incl. current bar)	mm	26
Rated lamp wattage	W	1700	Base height part l <sub>4</sub>	mm	13,5
Rated lamp voltage	V	84,5	Base height part l <sub>5</sub>	mm	27
Rated lamp current (~)	A	20	Base height part l <sub>6</sub>	mm	13,5
Luminous flux	lm	135.000	Base plate diameter w <sub>1</sub>	mm	36
Luminous efficacy	lm/W	82	Base neck width w <sub>2</sub>	mm	28
Color temperature	K	5.600	Base handle width w <sub>3</sub>	mm	16
Color rendering index	Ra	90	Base neck width w <sub>4</sub>	mm	16
Average service life	h	750	Base pin inner distance s <sub>1</sub>	mm	19
Light arc length	mm	5,2	Base pin outer distance s <sub>2</sub>	mm	43,5
Lamp length (overall) l <sub>1</sub>	mm	max. 121	Base pin length s <sub>3</sub>	mm	8
Lamp length l <sub>2</sub>	mm	105	Base pin width s <sub>4</sub>	mm	2,5
LCL a	mm	60	Base (pre-focus/bayonet)	PGJ28 Lok-it!®	
Base height (overall) l <sub>3</sub>	mm	40,5			

### ■ Lamp operation

## Technical Information

No. DO

Edition: 03/16 - subject to change

Supersedes: initial release

Status: approved



plug'n'play Metal Halide Lamp

**Lok-it!® 1700/PS**

Maximum pinch seal temperature allowed                      °C                      450 / with eXtreme Seal Technology (measured at welding point)

Cooling    forced cooling / fan required

Burning position    any

The Lok-it!® 1700/PS is designed to be operated on electronic power supplies (ECG) only.

### ■ Manufacturers of igniters and control gear (not all officially approved by OSRAM)

#### Ballast:

Schiederwerk ELD 8-120

Schiederwerk M-PVG 12-16 AC

#### Ignitor:

Schiederwerk KZG 20-5