

Technical Information

No. FO 5987

Edition: 10/17 draft - subject to change

Supersedes: n/a

Status: valid

Mercury Discharge Lamp

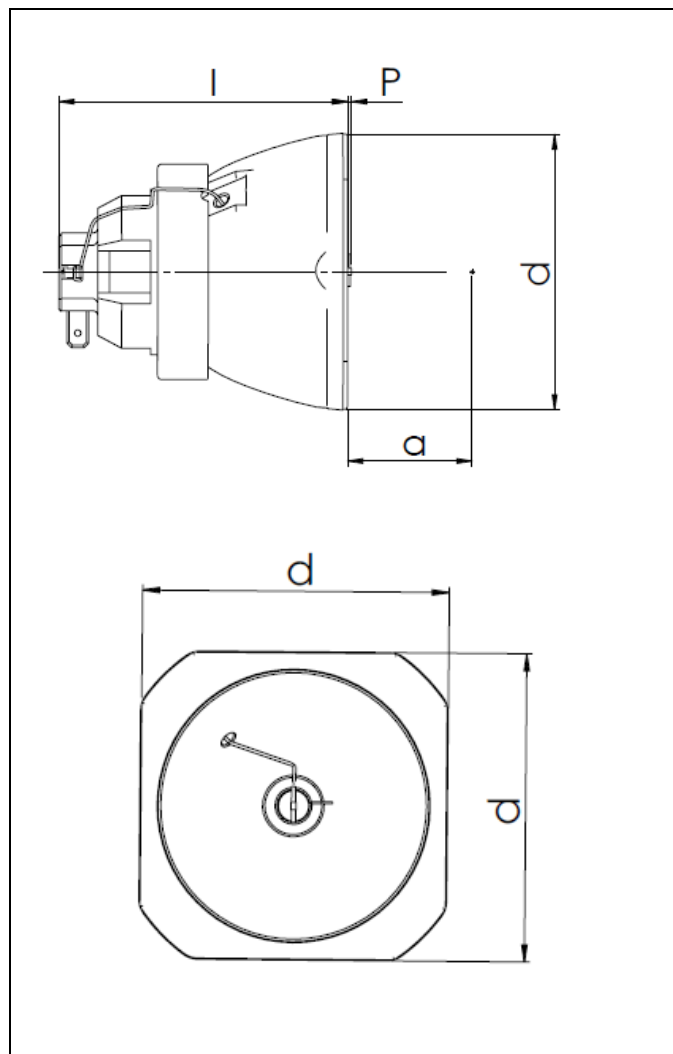
SIRIUS HRI® 470W RO

■ Product description

The OSRAM SIRIUS HRI® 470W RO with its focusing dichroic reflector is highly efficient and optimized for entertainment fixtures. The distance between the reflector's alignment plane and the second focal point (working distance) is 48mm. Main applications of the SIRIUS HRI® 470W RO are moving head projectors.

■ Technical data

Order reference	SIRIUS HRI® 470W RO	
Rated lamp wattage	W	470
Rated lamp voltage	V	83
Rated lamp current (square)	A	5.6
Ignition voltage (cold/hot)	kV _s	2.5
Color temperature	K	7,500
Electrode gap	mm	1.3
Lamp length l	mm	max. 67
Burner excess P	mm	max. 5
Reflector diameter d	mm	60
Working distance a	mm	48
Average service life	h	1,500
Initial luminous flux (D6)	lm	19500
CRI		80



■ Lamp operation

Burning position	any
Electrical connection	Tyco FASTON 187 compatible tab terminal
Cooling	Forced cooling needed for lead wires (Refer to system specification)
Lamp driver	For best luminous efficiency and maintenance results, the SIRIUS HRI® 470W RO should be operated only with PT-SIRIUS 470w lamp driver.

*target value, has to be proved by lifetime test

OSRAM