



# MASTER LEDtube InstantFit HF T5



## MAS LEDtube HF 600mm HE 8W 840 T5

The Philips MASTER LEDtube integrates a LED light source into a traditional fluorescent form factor. Its unique design creates a perfectly uniform visual appearance, which cannot be distinguished from traditional fluorescent. These T5 lighting tubes are the right choice for absolute performance and are designed to stand up to everyday conditions. Unparalleled savings thanks to low energy consumption and an exceptionally long lifetime make these T5 LED tubes the choice for every demanding application.

### Product data

| General Information                |                    |
|------------------------------------|--------------------|
| Cap-Base                           | G5 [G5]            |
| Nominal lifetime                   | 60,000 hour(s)     |
| Switching Cycle                    | 50,000             |
| Lighting Technology                | LED                |
| Flux measurement reference         | Sphere             |
| CE mark                            | Yes                |
| EU RoHS compliant                  | Yes                |
| Light Technical                    |                    |
| Color Code                         | 840 [CCT of 4000K] |
| Beam Angle (Nom)                   | 200 degree(s)      |
| Luminous Flux                      | 1,050 lumen        |
| Color Designation                  | Cool White (CW)    |
| Correlated Color Temperature (Nom) | 4000 K             |
| Luminous Efficacy (rated) (Nom)    | 131 lm/W           |
| Color Consistency                  | <6                 |
| Color rendering index (CRI)        | 80                 |

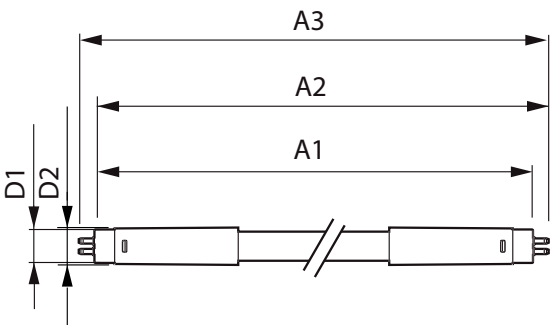
| LLMF At End Of Nominal Lifetime (Nom)            | 70 %            |
|--|-----------------|
| Photobiological safety according to EN 62471 RGO |                 |
| Operating and Electrical                         |                 |
| Line Frequency                                   | 30K to 100K Hz  |
| Input Frequency                                  | 30K to 100K Hz  |
| Power Consumption                                | 8 W             |
| Starting Time (Nom)                              | 0.5 s           |
| Warm-up time to 60% light                        | 0.5 s           |
| Power Factor (Fraction)                          | 0.92            |
| Voltage (Nom)                                    | 40-70 V         |
| LED alternative to fluorescent lamp power        | 14 W            |
| Temperature                                      |                 |
| Ambient temperature range                        | -20 °C to 45 °C |
| T-Case Maximum (Nom)                             | 65 °C           |

MASTER LEDtube InstantFit HF T5

|                               |   |
|-------------------------------|---|
| Controls and Dimming          |   |
| Dimmable                      | Yes - Check ballast compatibility                       |
| Mechanical and Housing        |   |
| Bulb Finish                   | Frosted   |
| Bulb Material                 | Glass   |
| Product Length                | 600 mm  |
| Bulb Shape                    | Tube, double-ended                                      |
| Approval and Application      |   |
| Energy Efficiency Class       | E   |
| Energy Saving Product         | Yes   |
| Approval Marks                | RoHS compliance TUV CE marking KEMA<br>Keur certificate |
| Energy Consumption kWh/1000 h | 8 kWh   |

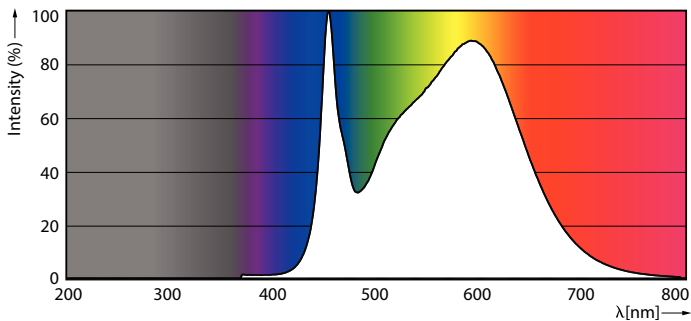
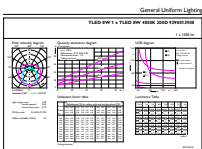
|                                 |                                   |
|---------------------------------|-----------------------------------|
| EPREL Registration Number       | 1384132                           |
| Product Data                    |                                   |
| Full product code               | 871869674325600                   |
| Order product name              | MAS LEDtube HF 600mm HE 8W 840 T5 |
| Order code                      | 929001390802                      |
| Numerator - Quantity Per Pack   | 1                                 |
| Numerator - Packs per outer box | 10                                |
| Material Nr. (12NC)             | 929001390802                      |
| Full product name               | MAS LEDtube HF 600mm HE 8W 840 T5 |
| EAN/UPC - Case                  | 8718696743263                     |
| EAN/UPC - Product/Case          | 8718696743256                     |

Dimensional drawing



| Product                           | D1      | D2      | A1     | A2       | A3       |
|-----------------------------------|---------|---------|--------|----------|----------|
| MAS LEDtube HF 600mm HE 8W 840 T5 | 15.5 mm | 18.8 mm | 549 mm | 556.1 mm | 563.2 mm |

Photometric data

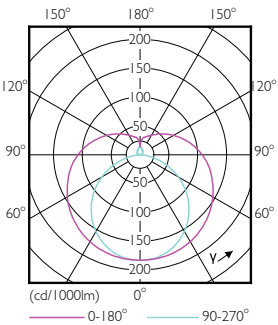


General uniform lighting - MAS LEDtube HF 600mm HE 8W 840 T5

Spectral Power Distribution Colour - MAS LEDtube HF 600mm HE 8W 840 T5

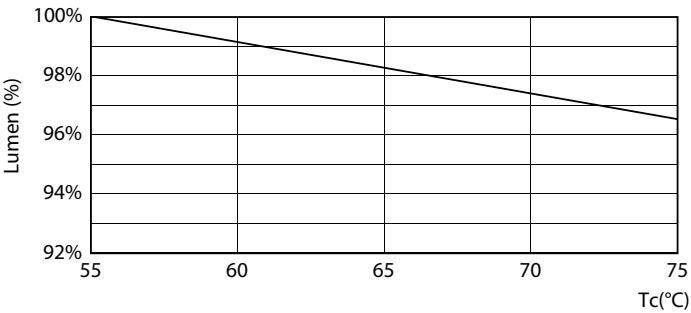
MASTER LEDtube InstantFit HF T5

Photometric data



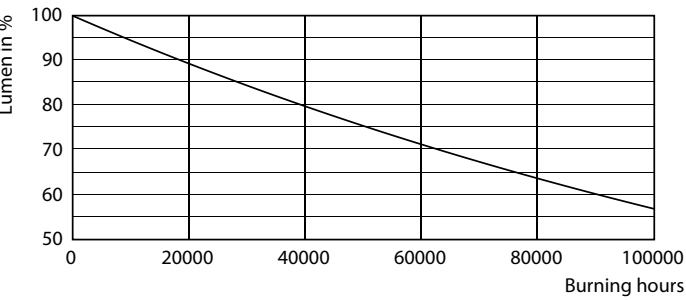
Light Distribution Diagram - MAS LEDtube HF 600mm HE 8W 840 T5

Lifetime



Lumen Maintenance Diagram - MAS LEDtube HF 600mm HE 8W 840 T5

Life Expectancy Diagram - MAS LEDtube HF 600mm HE 8W 840 T5

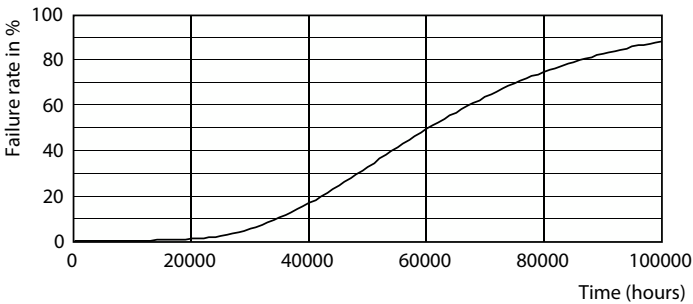


Life Expectancy Diagram - MAS LEDtube HF 600mm HE 8W 840 T5

Lumen Maintenance Diagram - MAS LEDtube HF 600mm HE 8W 840 T5

MASTER LEDtube InstantFit HF T5

Lifetime



Life Expectancy Diagram - MAS LEDtube HF 600mm HE 8W 840 T5

