



Coreline tempo medium

BVP125 LED80-4S/740 S

Coreline tempo medium - LED module 8000 lm - 740 neutral white - Symmetrical

CoreLine tempo medium is a highly efficient range of floodlights designed for 1:1 retrofit replacement of conventional technology, while retaining the same electrical installation and poles. A limited range of options makes it easy to find the best lux-for-lux replacement. The easy-to-install CoreLine tempo medium offers lumen packages for many different application areas as well as a choice of high-performance asymmetrical and symmetrical optics. It includes a U-shaped universal mounting bracket and external quick 3-poles IP68 connector.

Product data

General Information			
Lamp family code	LED80 [LED module 8000 lm]	Optic type outdoor	Symmetrical
Light source color	740 neutral white	Constant light output	No
Light source replaceable	No	Number of products on MCB of 16 A type B	8
Number of gear units	1 unit	RoHS mark	RoHS mark
Driver/power unit/transformer	Power supply unit	Light source engine type	LED
Driver included	Yes	Serviceability class	Class C, luminaire without serviceable parts, not serviceable
Optical cover/lens type	Flat glass	Product family code	BVP125 [Coreline tempo medium]
Luminaire light beam spread	69° x 25°	Light Technical	
Connection	External connector	Upward light output ratio	0
Cable	Cable 0.45 m with connector 3-pole	Standard tilt angle posttop	0°
Protection class IEC	Safety class I	Standard tilt angle side entry	0°
Flammability mark	For mounting on normally flammable surfaces	Operating and Electrical	
CE mark	CE mark	Input Voltage	220 to 240 V
ENEC mark	ENEC mark		
Warranty period	3 years		

Coreline tempo medium

Input Frequency	50 to 60 Hz
Inrush current	53 A
Inrush time	0.3 ms
Power Factor (Min)	0.94

Controls and Dimming

Dimmable	No
----------	----

Mechanical and Housing

Housing Material	Aluminum
Reflector material	-
Optic material	Polycarbonate
Optical cover/lens material	Glass
Fixation material	Aluminum
Mounting device	Wall-mounting bracket
Optical cover/lens shape	Flat
Optical cover/lens finish	Clear
Overall length	388.5 mm
Overall width	265 mm
Overall height	67.4 mm
Effective projected area	0.09 m²

Approval and Application

Ingress protection code	IP66 [Dust penetration-protected, jet-proof]
Mech. impact protection code	IK08 [5 J vandal-protected]
Surge Protection (Common/Differential)	Luminaire surge protection level until 6 kV differential mode and 8 kV common mode

Initial Performance (IEC Compliant)

Initial luminous flux (system flux)	8000 lm
-------------------------------------	---------

Luminous flux tolerance	+/-7%
Initial LED luminaire efficacy	133 lm/W
Init. Corr. Color Temperature	4000 K
Init. Color Rendering Index	>70
Initial chromaticity	(0.382, 0.379) SDCM <3
Initial input power	63 W
Power consumption tolerance	+/-11%

Over Time Performance (IEC Compliant)

Driver failure rate at 5000 h	0.12 %
Useful life L80B10	70000 h
Lumen maintenance at useful life of 100000 h, at 25 °C	94

Application Conditions

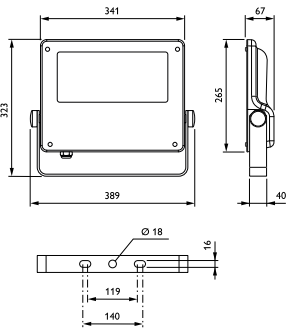
Ambient temperature range	-40 to +35 °C
---------------------------	---------------

Product Data

Full product code	871869945590300
Order product name	BVP125 LED80-4S/740 S
EAN/UPC - Product	8718699455903
Order code	912300024004
Numerator - Quantity Per Pack	1
Numerator - Packs per outer box	1
Material Nr. (12NC)	912300024004
Net Weight (Piece)	4.750 kg



Dimensional drawing



CoreLine Tempo BVP110/120/125/130/140

Coreline tempo medium

