



MASTER LEDtube InstantFit HF T8

MASTER LEDtube HF 1500mm HO 25W830 T8

Philips MASTER LEDtube InstantFit T8 integrates a LED light source into a traditional fluorescent form factor. Its unique design creates a perfectly uniform visual appearance which cannot be distinguished from traditional fluorescent. Philips MASTER LEDtube InstantFit T8 is the ideal solution for customers who have higher light requirements and want to maximize value over lifetime. Full energy savings & longer lifetime result in attractive payback times and TCO benefits.

Product data

General Information	
Cap-Base	G13 [Medium Bi-Pin Fluorescent]
Main Application	Industrial
Nominal Lifetime (Nom)	50000 h
Switching Cycle	50000X
B50L70	50000 h
Light Technical	
Color Code	830 [CCT of 3000K]
Beam Angle (Nom)	160 °
Luminous Flux (Nom)	2900 lm
Luminous Flux (Rated) (Nom)	2900 lm
Rated Beam Angle	160 °
Correlated Color Temperature (Nom)	3000 K
Color Consistency	<6
Color Rendering Index (Nom)	83
LLMF At End Of Nominal Lifetime (Nom)	70 %

Operating and Electrical	
Input Frequency	25000-80000 Hz
Power (Rated) (Nom)	25 W
Lamp Current (Nom)	300 mA
Starting Time (Nom)	0.5 s
Warm Up Time to 60% Light (Nom)	instant full light s
Power Factor (Nom)	0.9
Voltage (Nom)	50-100 V
Temperature	
T-Ambient (Max)	35 °C
T-Ambient (Min)	-20 °C
T-Storage (Max)	65 °C
T-Storage (Min)	-40 °C
T-Case Maximum (Nom)	45 °C
Controls and Dimming	
Dimmable	No

MASTER LEDtube InstantFit HF T8

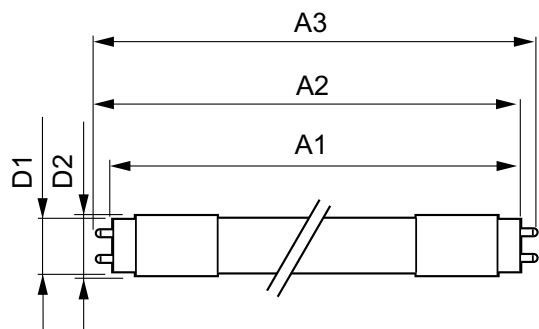
Mechanical and Housing	
Product Length	1500 mm
Approval and Application	
Energy Saving Product	Yes
Suitable For Accent Lighting	No
Energy Efficiency Label (EEL)	A+
Approval Marks	CE marking RoHS compliance KEMA Keur certificate
Energy Consumption kWh/1000 h	30 kWh
Product Data	
Full product code	871869651458000

Order product name	MASTER LEDtube HF 1500mm HO 25W830 T8
EAN/UPC - Product	8718696514580
Order code	929001179302
Numerator - Quantity Per Pack	1
Numerator - Packs per outer box	10
Material Nr. (12NC)	929001179302
Net Weight (Piece)	0.450 kg

Warnings and Safety

- NOTES: The overall energy efficiency and light distribution of any installation that uses these lamps are determined by the design of the installation.

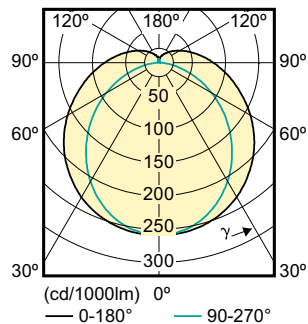
Dimensional drawing



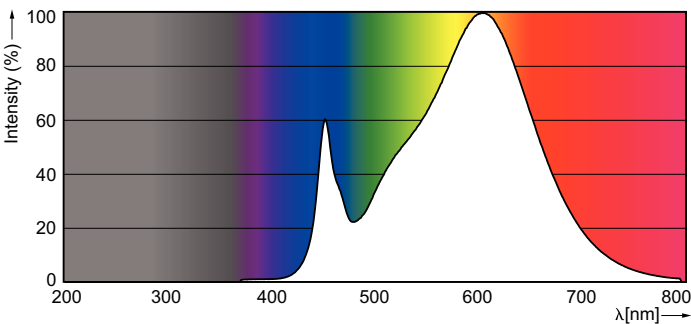
LEDtube HF 1500mm HO 25W 830 T8

Product	D1	D2	A1	A2	A3
MASTER LEDtube HF 1500mm HO 25W830 T8	25.68 mm	28 mm	1500.0 mm	1507.1 mm	1514.2 mm

Photometric data



LEDtube HF 1500mm SO 25 W T8



LEDtube HF 1500mm SO 25 W /830 T8

MASTER LEDtube InstantFit HF T8

