



CorePro LED PLS



CorePro LED PLS 5W 840 2P G23

The Philips CorePro LED PLS integrates a LED light source into a traditional fluorescent form factor. This product is the ideal solution for uplamping in general lighting applications: it meets basic lighting requirements, offers significant energy savings, and is environment-friendly.

Product data

General Information	
Cap-Base	G23 [G23]
Nominal lifetime	30,000 hour(s)
Switching Cycle	50,000
Lighting Technology	LED
Flux measurement reference	Sphere
CE mark	Yes
EU RoHS compliant	Yes
Light Technical	
Color Code	840 [CCT of 4000K]
Beam Angle (Nom)	120 degree(s)
Luminous Flux	550 lumen
Color Designation	Cool White (CW)
Correlated Color Temperature (Nom)	4000 K
Luminous Efficacy (rated) (Nom)	110.00 lm/W
Color Consistency	<6
Color rendering index (CRI)	82
LLMF At End Of Nominal Lifetime (Nom)	70 %
Photobiological safety according to EN 62471 RGO	
Operating and Electrical	
Line Frequency	50 to 60 Hz

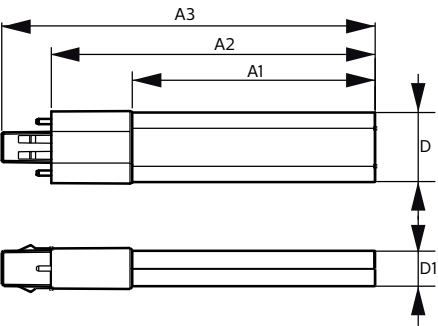
Input Frequency	50 to 60 Hz
Power Consumption	5 W
Starting Time (Nom)	0.5 s
Warm-up time to 60% light	0.5 s
Power Factor (Fraction)	0.9
Voltage (Nom)	220-240 V
LED alternative to fluorescent lamp power	11 W
Temperature	
Ambient temperature range	-20 °C to 45 °C
T-Case Maximum (Nom)	83 °C
Controls and Dimming	
Dimmable	No
Mechanical and Housing	
Bulb Material	Plastic
Product Length	170 mm
Bulb Shape	Tube, single-ended
Approval and Application	
Energy Efficiency Class	F
Energy Saving Product	Yes

CorePro LED PLS

Approval Marks	TUV CE marking RoHS compliance KEMA Keur certificate
Energy Consumption kWh/1000 h	5 kWh
EPREL Registration Number	403567
Product Data	
Full product code	871869959668200
Order product name	CorePro LED PLS 5W 840 2P G23
Order code	929001926402

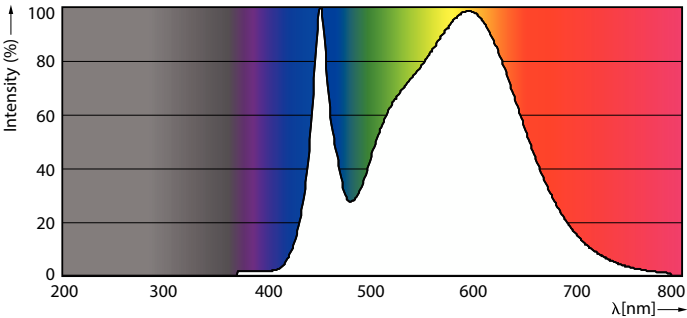
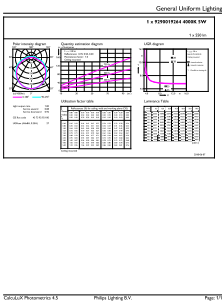
Numerator - Quantity Per Pack	1
Numerator - Packs per outer box	20
Material Nr. (12NC)	929001926402
Full product name	CorePro LED PLS 5W 840 2P G23
EAN/UPC - Case	8718699596699
EAN/UPC - Product/Case	8718699596682

Dimensional drawing



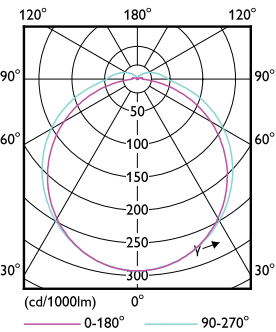
Product	D	D1	A1	A2	A3
CorePro LED PLS 5W 840 2P G23	31.1 mm	15.8 mm	108 mm	144 mm	166 mm

Photometric data



General uniform lighting - CorePro LED PLS 5W 840 2P G23

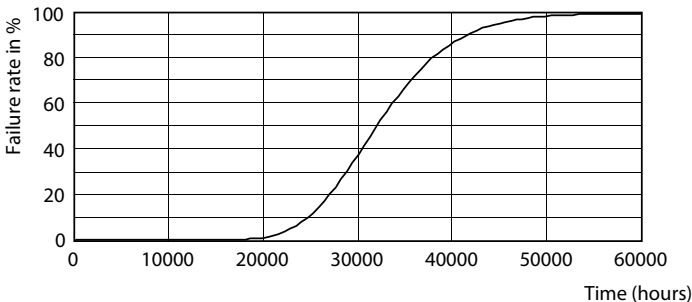
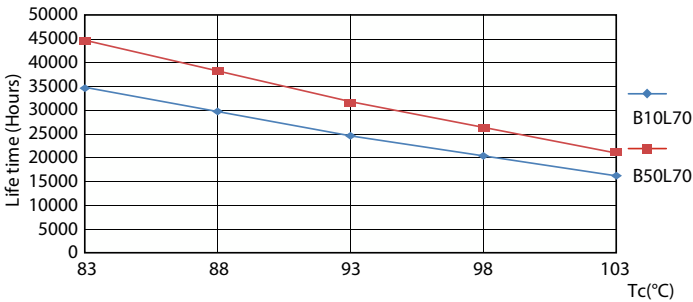
Spectral Power Distribution Colour - CorePro LED PLS 5W 840 2P G23



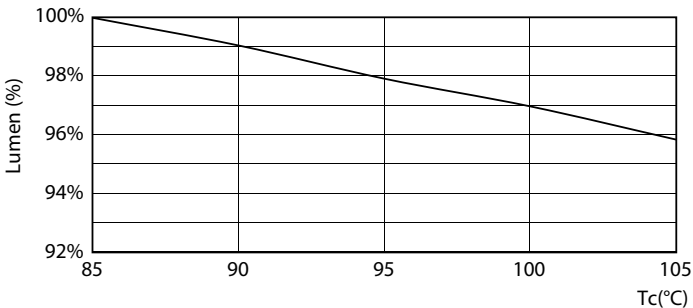
Light Distribution Diagram - CorePro LED PLS 5W 840 2P G23

CorePro LED PLS

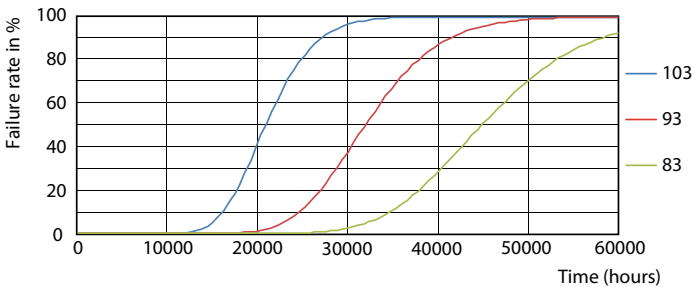
Lifetime



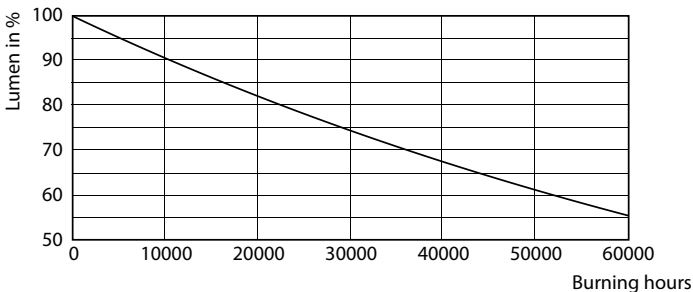
Life Expectancy Diagram - CorePro LED PLS 5W 840 2P G23



Life Expectancy Diagram - CorePro LED PLS 5W 840 2P G23



Lumen Maintenance Diagram - CorePro LED PLS 5W 840 2P G23



Life Expectancy Diagram - CorePro LED PLS 5W 840 2P G23

Lumen Maintenance Diagram - CorePro LED PLS 5W 840 2P G23

CorePro LED PLS

