

CorePro LED PLL



CorePro LED PLL HF 24W 840 4P 2G11

Philips CorePro LED PLL is the ideal uplamping solution for downlights & luminaires in a wide range of general lighting applications. It integrates a LED light source into a traditional fluorescent form factor to offer superb energy savings over a lifetime that's twice as long as fluorescent alternatives.

Product data

General Information	
Cap-Base	2G11 [2G11]
Nominal lifetime	30,000 hour(s)
Switching Cycle	50,000
Lighting Technology	LED
Flux measurement reference	Sphere
CE mark	Yes
EU RoHS compliant	Yes

Light Technical	
Color Code	840 [CCT of 4000K]
Beam Angle (Nom)	160 degree(s)
Luminous Flux	3,400 lumen
Color Designation	Cool White (CW)
Correlated Color Temperature (Nom)	4000 K
Luminous Efficacy (rated) (Nom)	141.00 lm/W
Color Consistency	<6
Color rendering index (CRI)	83
LLMF At End Of Nominal Lifetime (Nom)	70 %
Photobiological safety according to EN 62471	RG0

Operating and Electrical	
Line Frequency	20000-70000 Hz

Input Frequency	20000-70000 Hz
Power Consumption	24 W
Lamp Current (Max)	600 mA
Lamp Current (Min)	400 mA
Starting Time (Nom)	0.5 s
Warm-up time to 60% light	0.5 s
Power Factor (Fraction)	0.9
Voltage (Nom)	53-77 V
LED alternative to fluorescent lamp power	55 W

Temperature	
Ambient temperature range	-20 °C to 45 °C
T-Case Maximum (Nom)	70 °C

Controls and Dimming	
Dimmable	No

Mechanical and Housing	
Product Length	540 mm
Bulb Shape	Tube, single-ended

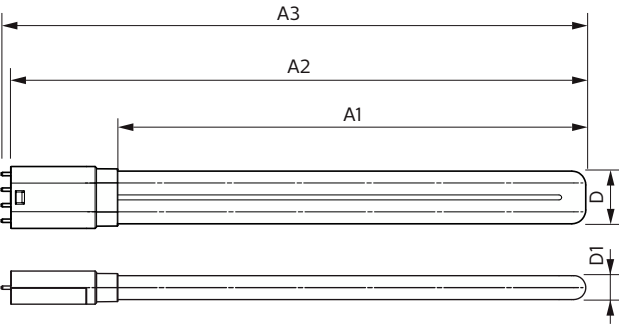
Approval and Application	
Energy Efficiency Class	E

CorePro LED PLL

Energy Saving Product	Yes
Approval Marks	TUV CE marking RoHS compliance KEMA Keur certificate
Energy Consumption kWh/1000 h	24 kWh
EPREL Registration Number	387356
Product Data	
Full product code	871869682841000
Order product name	CorePro LED PLL HF 24W 840 4P 2G11

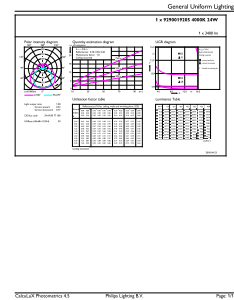
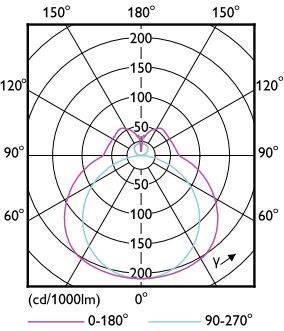
Order code	929001920502
Numerator - Quantity Per Pack	1
Numerator - Packs per outer box	10
Material Nr. (12NC)	929001920502
Full product name	CorePro LED PLL HF 24W 840 4P 2G11
EAN/UPC - Case	8718696828427
EAN/UPC - Product/Case	8718696828410

Dimensional drawing



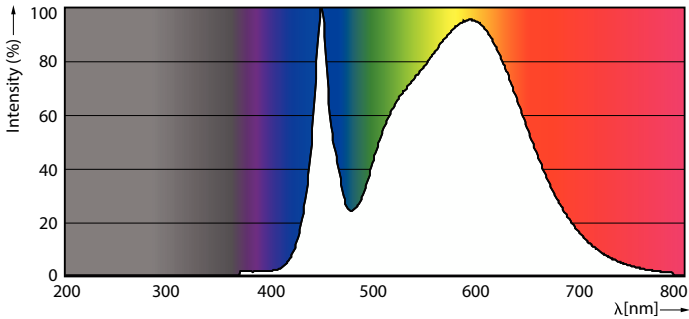
Product	D	D1	A1	A2	A3
CorePro LED PLL HF 24W 840 4P 2G11	37.6 mm	17 mm	453 mm	528.5 mm	535.1 mm

Photometric data



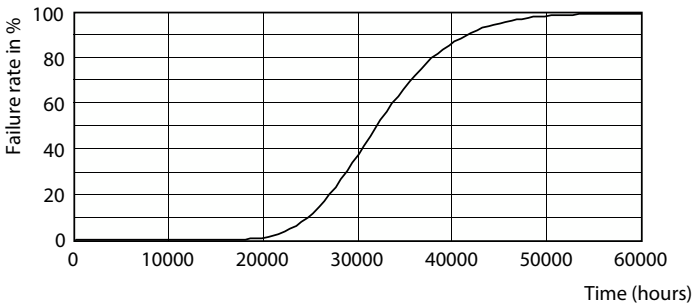
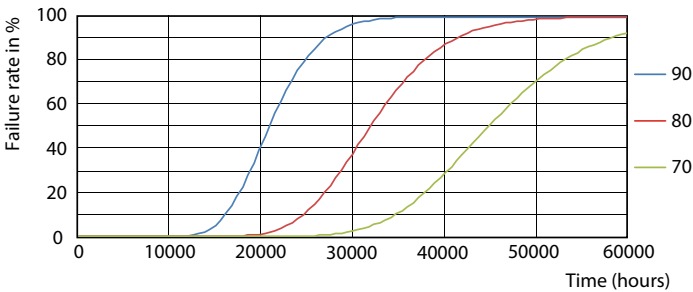
Light Distribution Diagram - CorePro LED PLL HF 24W 840 4P 2G11

General uniform lighting - CorePro LED PLL HF 24W 840 4P 2G11

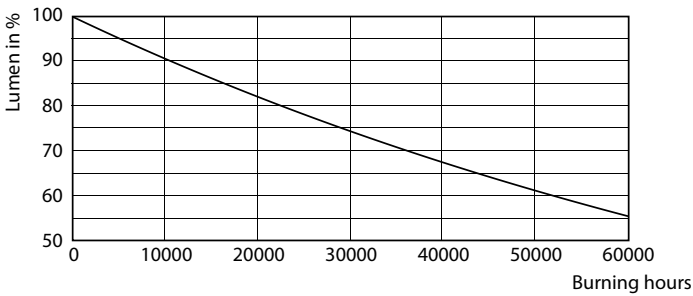


Spectral Power Distribution Colour - CorePro LED PLL HF 24W 840 4P 2G11

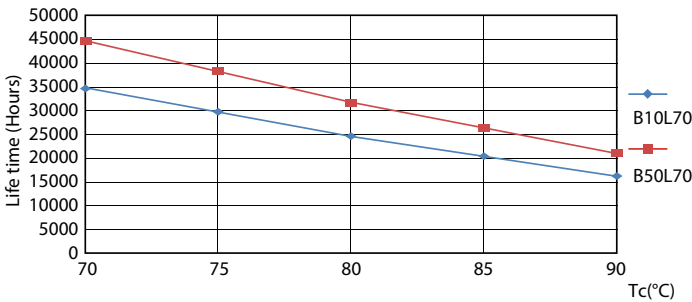
Lifetime



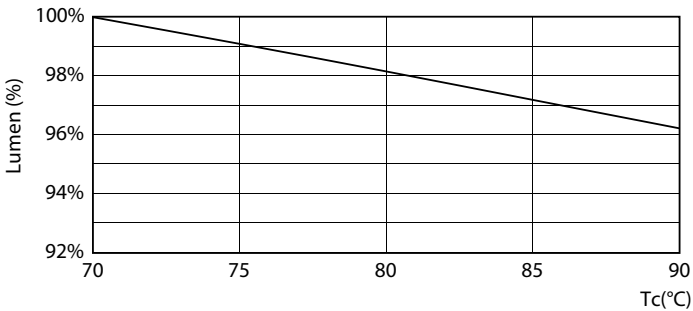
Life Expectancy Diagram - CorePro LED PLL HF 24W 840 4P 2G11



Life Expectancy Diagram - CorePro LED PLL HF 24W 840 4P 2G11



Lumen Maintenance Diagram - CorePro LED PLL HF 24W 840 4P 2G11



Life Expectancy Diagram - CorePro LED PLL HF 24W 840 4P 2G11

Lumen Maintenance Diagram - CorePro LED PLL HF 24W 840 4P 2G11

CorePro LED PLL

