



MASTER LEDtube EM/ Mains T8



MAS LEDtube 1500mm HO 18.2W 865 T8

The Philips MASTER LEDtube integrates a LED light source into a traditional fluorescent form factor. Its unique design creates a perfectly uniform visual appearance, which cannot be distinguished from traditional fluorescent. These T8 LED tubes are the right choice for absolute performance and are designed to stand up to everyday conditions. Unparalleled savings thanks to low energy consumption and an exceptionally long lifetime ensure this tube masters every demanding application.

Warnings and Safety

- NOTE: The overall energy efficiency and light distribution of any installation that uses these lamps will be determined by the design of the installation.

Product data

General Information		Color Designation	
Cap-Base	G13 ROT (Rotating) [Medium Bi-Pin Fluorescent]	Color Designation	Cool Daylight
Nominal lifetime	75,000 hour(s)	Correlated Color Temperature (Nom)	6500 K
Switching Cycle	200,000	Luminous Efficacy (rated) (Nom)	170 lm/W
Lighting Technology	LED	Color Consistency	<6
Flux measurement reference	Sphere	Color rendering index (CRI)	80
CE mark	Yes	LLMF At End Of Nominal Lifetime (Nom)	70 %
EU RoHS compliant	Yes	Flickering value (PstLM)	0.5
		Stroboscopic effect value (SVM)	0.2
		Photobiological safety according to EN 62471	RGO
Light Technical		Operating and Electrical	
Color Code	865 [CCT of 6500K]	Line Frequency	50 to 60 Hz
Beam Angle (Nom)	160 degree(s)	Input Frequency	50 to 60 Hz
Luminous Flux	3,100 lumen	Power Consumption	18.2 W

MASTER LEDtube EM/Mains T8

Lamp Current (Max)	93 mA
Lamp Current (Min)	77 mA
Starting Time (Nom)	0.5 s
Warm-up time to 60% light	0.5 s
Power Factor (Fraction)	0.9
Voltage (Nom)	220-240 V
LED alternative to fluorescent lamp power	58 W

Temperature

Ambient temperature range	-20 °C to 45 °C
T-Case Maximum (Nom)	55 °C

Controls and Dimming

Dimmable	No
----------	----

Mechanical and Housing

Bulb Finish	Frosted
Bulb Material	Plastic
Product Length	1,500 mm
Bulb Shape	Tube, double-ended

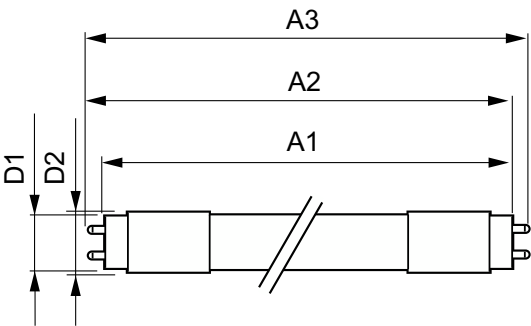
Approval and Application

Energy Efficiency Class	C
Energy Saving Product	Yes
Approval Marks	RoHS compliance TUV CE marking KEMA Keur certificate
Energy Consumption kWh/1000 h	19 kWh
EPREL Registration Number	1206971

Product Data

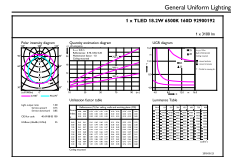
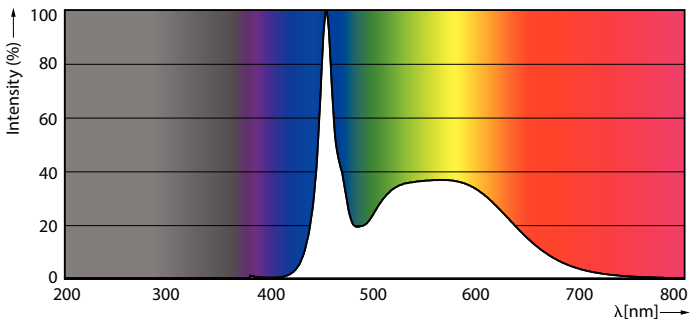
Full product code	871869959245500
Order product name	MAS LEDtube 1500mm HO 18.2W 865 T8
Order code	929001923102
Numerator - Quantity Per Pack	1
Numerator - Packs per outer box	10
Material Nr. (12NC)	929001923102
Full product name	MAS LEDtube 1500mm HO 18.2W 865 T8
EAN/UPC - Case	8718699592462
EAN/UPC - Product/Case	8718699592455

Dimensional drawing



Product	D1	D2	A1	A2	A3
MAS LEDtube 1500mm HO 18.2W 865 T8	25.8 mm	28 mm	1,498.8 mm	1,505.9 mm	1,513 mm

Photometric data

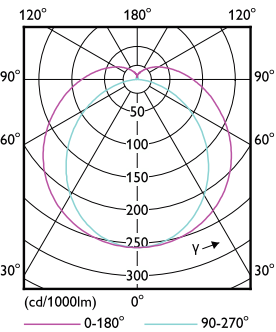


Spectral Power Distribution Colour - MAS LEDtube 1500mm HO 18.2W 865 T8

General uniform lighting - MAS LEDtube 1500mm HO 18.2W 865 T8

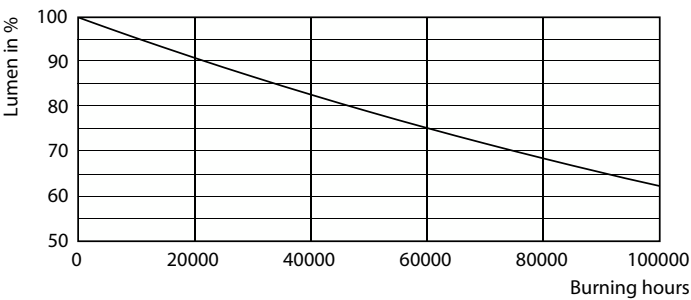
MASTER LEDtube EM/Mains T8

Photometric data

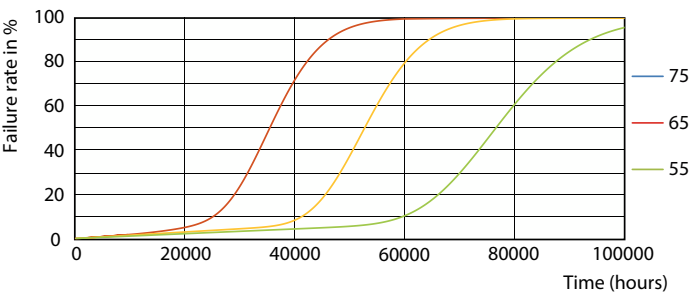


Light Distribution Diagram - MAS LEDtube 1500mm HO 18.2W 865 T8

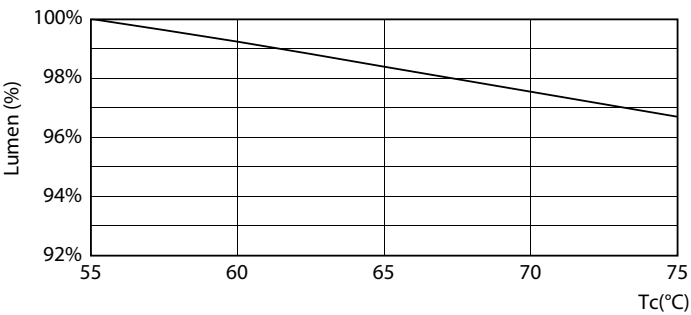
Lifetime



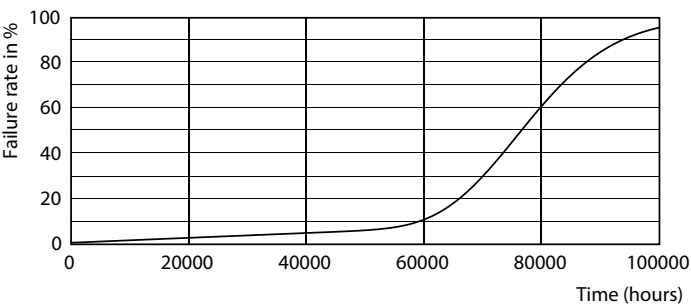
Lumen Maintenance Diagram - MAS LEDtube 1500mm HO 18.2W 865 T8



Life Expectancy Diagram - MAS LEDtube 1500mm HO 18.2W 865 T8



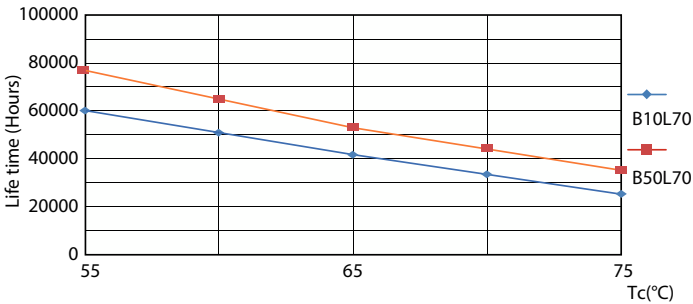
Lumen Maintenance Diagram - MAS LEDtube 1500mm HO 18.2W 865 T8



Life Expectancy Diagram - MAS LEDtube 1500mm HO 18.2W 865 T8

MASTER LEDtube EM/Mains T8

Lifetime



Life Expectancy Diagram - MAS LEDtube 1500mm HO 18.2W 865 T8

