



CorePro LED PLL



CorePro LED PLL HF 16.5W 830 4P 2G11

Philips CorePro LED PLL is the ideal uplamping solution for downlights & luminaires in a wide range of general lighting applications. It integrates a LED light source into a traditional fluorescent form factor to offer superb energy savings over a lifetime that's twice as long as fluorescent alternatives.

Product data

General Information		Input Frequency	
Cap-Base	2G11 [2G11]	Power Consumption	39000-71000 Hz
Nominal lifetime	30,000 hour(s)	Lamp Current (Max)	16.5 W
Switching Cycle	50,000	Lamp Current (Min)	420 mA
Lighting Technology	LED	Starting Time (Nom)	290 mA
Flux measurement reference	Sphere	Warm-up time to 60% light	0.5 s
CE mark	Yes	Power Factor (Fraction)	0.5 s
EU RoHS compliant	Yes	Voltage (Nom)	0.9
		LED alternative to fluorescent lamp power	53-77 V
			36 W
Light Technical		Temperature	
Color Code	830 [CCT of 3000K]	Ambient temperature range	-20 °C to 45 °C
Beam Angle (Nom)	160 degree(s)	T-Case Maximum (Nom)	70 °C
Luminous Flux	2,000 lumen		
Color Designation	White (WH)	Controls and Dimming	
Correlated Color Temperature (Nom)	3000 K	Dimmable	No
Luminous Efficacy (rated) (Nom)	121.00 lm/W		
Color Consistency	<6	Mechanical and Housing	
Color rendering index (CRI)	83	Bulb Material	Glass
LLMF At End Of Nominal Lifetime (Nom)	70 %	Product Length	400 mm
Photobiological safety according to EN 62471	RG0	Bulb Shape	Tube, single-ended
Operating and Electrical			
Line Frequency	39000-71000 Hz		

CorePro LED PLL

Approval and Application

Energy Efficiency Class	E
Energy Saving Product	Yes
Approval Marks	TUV CE marking RoHS compliance KEMA Keur certificate
Energy Consumption kWh/1000 h	17 kWh
EPREL Registration Number	387352

Product Data

Full product code	871869673966200
-------------------	-----------------

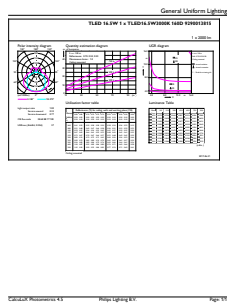
Order product name	CorePro LED PLL HF 16.5W 830 4P 2G11
Order code	929001381502
Numerator - Quantity Per Pack	1
Numerator - Packs per outer box	10
Material Nr. (12NC)	929001381502
Full product name	CorePro LED PLL HF 16.5W 830 4P 2G11
EAN/UPC - Case	8718696739679
EAN/UPC - Product/Case	8718696739662

Dimensional drawing

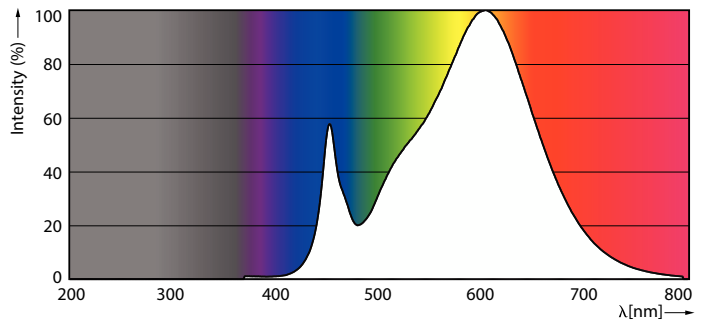


Product	D1	D2	A1	A2	A3
CorePro LED PLL HF 16.5W 830 4P 2G11	43.6 mm	23.4 mm	329.5 mm	405 mm	411.6 mm

Photometric data



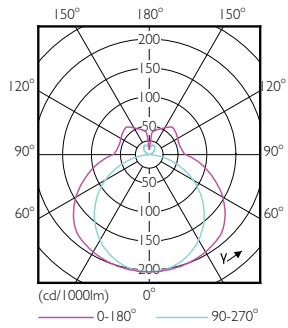
General uniform lighting - CorePro LED PLL HF 16.5W 830 4P 2G11



Spectral Power Distribution Colour - CorePro LED PLL HF 16.5W 830 4P 2G11

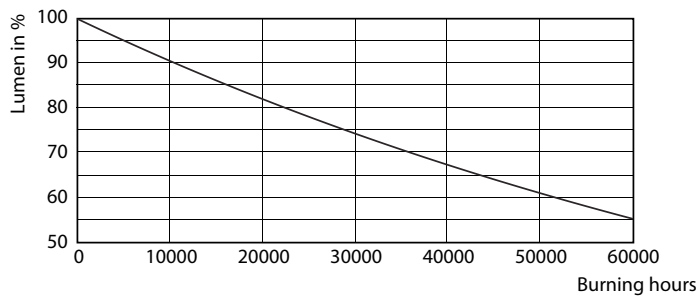
CorePro LED PLL

Photometric data

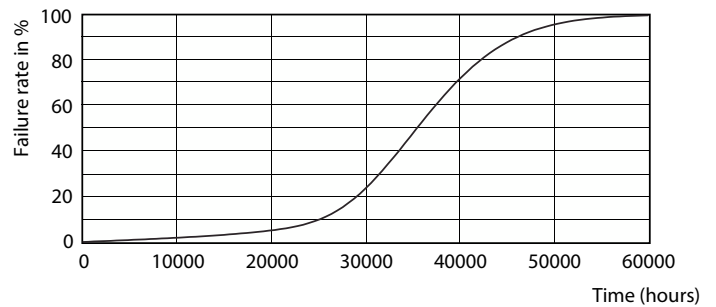


Light Distribution Diagram - CorePro LED PLL HF 16.5W 830 4P 2G11

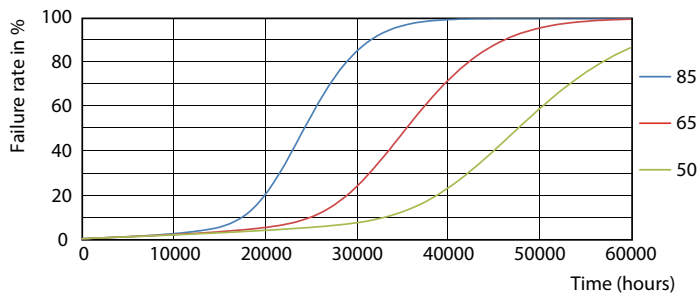
Lifetime



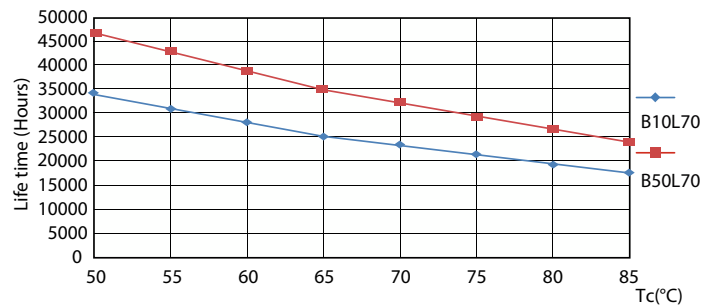
Lumen Maintenance Diagram - CorePro LED PLL HF 16.5W 830 4P 2G11



Life Expectancy Diagram - CorePro LED PLL HF 16.5W 830 4P 2G11



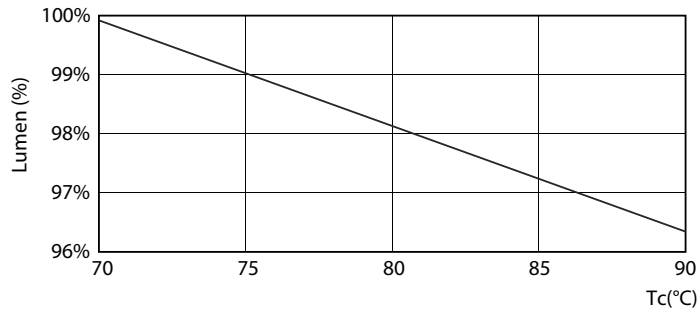
Life Expectancy Diagram - CorePro LED PLL HF 16.5W 830 4P 2G11



Life Expectancy Diagram - CorePro LED PLL HF 16.5W 830 4P 2G11

CorePro LED PLL

Lifetime



Lumen Maintenance Diagram - CorePro LED PLL HF 16.5W 830 4P 2G11

