



# MASTER LEDtube EM/ Mains T8



## MAS LEDtube 1500mm UO 21.7W 840 T8

The Philips MASTER LEDtube integrates a LED light source into a traditional fluorescent form factor. Its unique design creates a perfectly uniform visual appearance, which cannot be distinguished from traditional fluorescent. These T8 LED tubes are the right choice for absolute performance and are designed to stand up to everyday conditions. Unparalleled savings thanks to low energy consumption and an exceptionally long lifetime ensure this tube masters every demanding application.

### Warnings and Safety

- NOTE: The overall energy efficiency and light distribution of any installation that uses these lamps will be determined by the design of the installation.

### Product data

General Information	
Cap-Base	G13 ROT (Rotating) [Medium Bi-Pin Fluorescent]
Nominal lifetime	75,000 hour(s)
Switching Cycle	200,000
Lighting Technology	LED
Flux measurement reference	Sphere
CE mark	Yes
EU RoHS compliant	Yes
Light Technical	
Color Code	840 [CCT of 4000K]
Beam Angle (Nom)	160 degree(s)
Luminous Flux	3,700 lumen

Color Designation	Cool White (CW)
Correlated Color Temperature (Nom)	4000 K
Luminous Efficacy (rated) (Nom)	170 lm/W
Color Consistency	<6
Color rendering index (CRI)	80
LLMF At End Of Nominal Lifetime (Nom)	70 %
Flickering value (PstLM)	0.5
Stroboscopic effect value (SVM)	0.2
Photobiological safety according to EN 62471 RGO	
Operating and Electrical	
Line Frequency	50 to 60 Hz
Input Frequency	50 to 60 Hz
Power Consumption	21.7 W

MASTER LEDtube EM/Mains T8

Lamp Current (Max)	108 mA
Lamp Current (Min)	89 mA
Starting Time (Nom)	0.5 s
Warm-up time to 60% light	0.5 s
Power Factor (Fraction)	0.9
Voltage (Nom)	220-240 V
LED alternative to fluorescent lamp power	58 W

Temperature

Ambient temperature range	-20 °C to 45 °C
T-Case Maximum (Nom)	60 °C

Controls and Dimming

Dimmable	No
----------	----

Mechanical and Housing

Bulb Finish	Frosted
Bulb Material	Plastic
Product Length	1,500 mm
Bulb Shape	Tube, double-ended

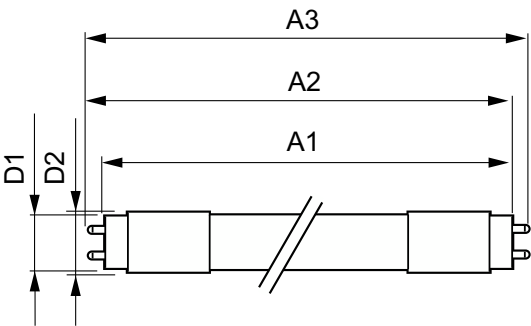
Approval and Application

Energy Efficiency Class	C
Energy Saving Product	Yes
Approval Marks	RoHS compliance TUV CE marking KEMA Keur certificate
Energy Consumption kWh/1000 h	22 kWh
EPREL Registration Number	1206977

Product Data

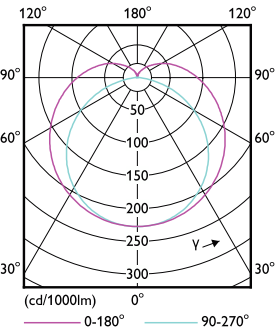
Full product code	871951431664500
Order product name	MAS LEDtube 1500mm UO 21.7W 840 T8
Order code	929002998602
Numerator - Quantity Per Pack	1
Numerator - Packs per outer box	10
Material Nr. (12NC)	929002998602
Full product name	MAS LEDtube 1500mm UO 21.7W 840 T8
EAN/UPC - Case	8719514316652
EAN/UPC - Product/Case	8719514316645

Dimensional drawing

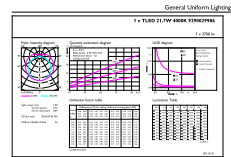


Product	D1	D2	A1	A2	A3
MAS LEDtube 1500mm UO 21.7W 840 T8	25.8 mm	28 mm	1,498.8 mm	1,505.9 mm	1,513 mm

Photometric data



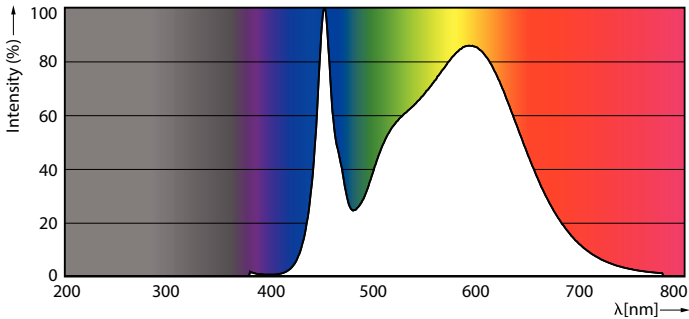
Light Distribution Diagram - MAS LEDtube 1500mm UO 21.7W 840 T8



General uniform lighting - MAS LEDtube 1500mm UO 21.7W 840 T8

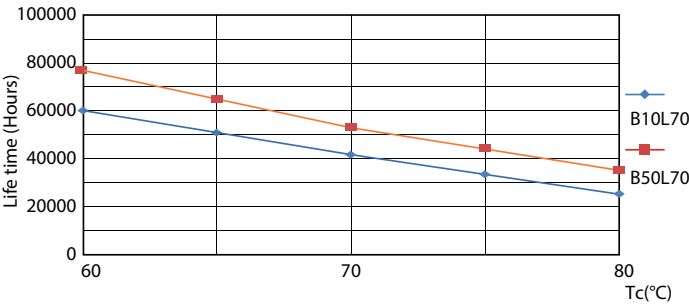
MASTER LEDtube EM/Mains T8

Photometric data

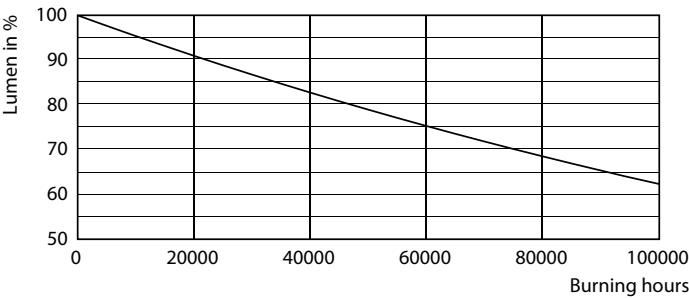


Spectral Power Distribution Colour - MAS LEDtube 1500mm UO 21.7W 840 T8

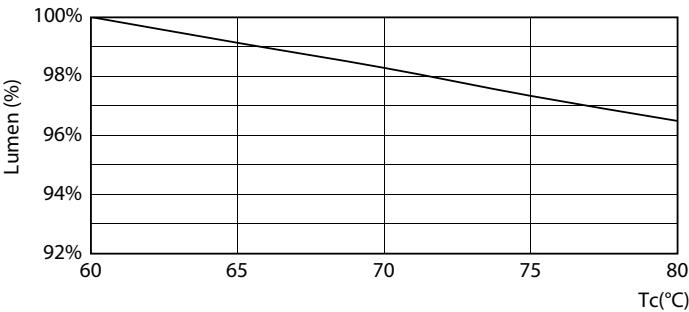
Lifetime



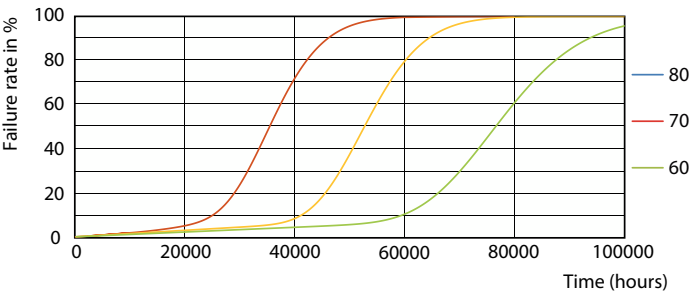
Life Expectancy Diagram - MAS LEDtube 1500mm UO 21.7W 840 T8



Lumen Maintenance Diagram - MAS LEDtube 1500mm UO 21.7W 840 T8



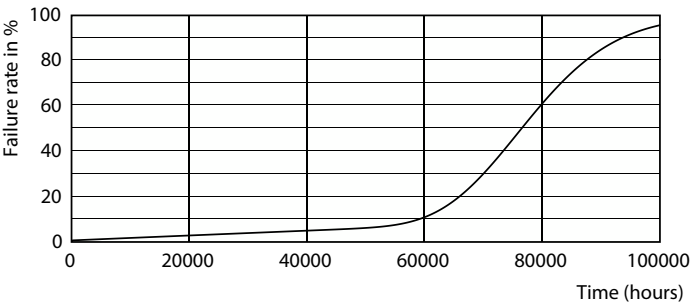
Lumen Maintenance Diagram - MAS LEDtube 1500mm UO 21.7W 840 T8



Life Expectancy Diagram - MAS LEDtube 1500mm UO 21.7W 840 T8

MASTER LEDtube EM/Mains T8

Lifetime



Life Expectancy Diagram - MAS LEDtube 1500mm UO 21.7W 840 T8

