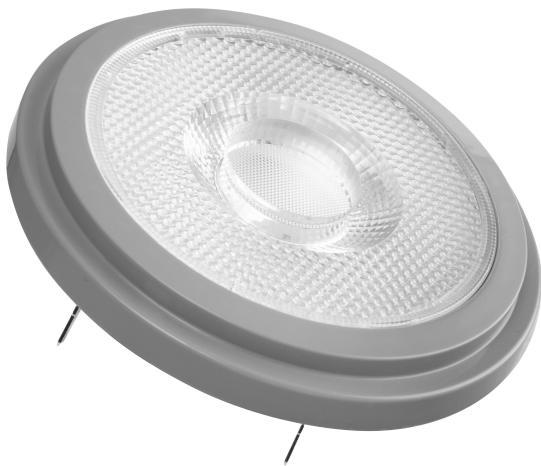


PRODUCT DATASHEET

PPRO AR111 75 24 ° 11.7 W/2700 K G53

PARATHOM® PRO AR111 | Low-voltage LED reflector lamps AR111 with retrofit pin base



Areas of application

- Shops and exhibition rooms
- Domestic applications
- Commercial applications
- Accent lighting
- Outdoor use in outdoor luminaires only (minimum IP65)

Product benefits

- Quick, simple and safe replacement without rewiring
- Design, dimensions, luminous flux comparable to an incandescent or halogen lamp
- Low maintenance costs thanks to long lifetime
- No UV and near-IR radiation in the light beam
- Stepless dimming
- Very high dimmer compatibility, see also www.ledvance.com/dim
- Compatible with many common conventional and electronic control gears (see also compatibility list)
- Instant 100 % light, no warm-up time

Product features

- LED alternative to low voltage halogen lamps
- High color consistency: ≤ 4 SDCM
- Dimmable
- Base: G53
- Excellent color rendering ($R_a: 97$)



- Lifetime: up to 40,000 h

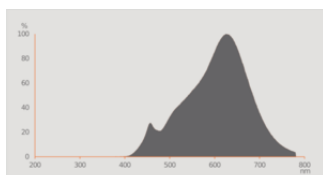
TECHNICAL DATA

Electrical data

| | |
|--|----------|
| Nominal wattage | 11.7 W |
| Construction wattage | 11.70 W |
| Nominal voltage | 12 V |
| Claimed equiv. conventional lamp power | 75 W |
| Nominal current | 1 A |
| Type of current | AC |
| Inrush current | 18 A |
| Operating frequency | 50/60 Hz |
| Mains frequency | 50/60 Hz |
| Max. lamp no. on circuit break. 10 A (B) | 25 |
| Max. lamp no. on circuit break. 16 A (B) | 32 |
| Power factor λ | > 0.50 |

Photometrical data

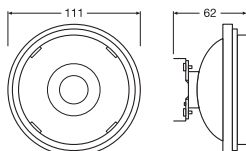
| | |
|---|---------------|
| Luminous intensity | 2800 cd |
| Luminous flux | 800 lm |
| Nominal useful luminous flux 90° | 800 lm |
| Luminous efficacy | 68 lm/W |
| Lumen main.fact.at end of nom.life time | 0.70 |
| Light color (designation) | Warm White |
| Color temperature | 2700 K |
| Color rendering index Ra | 97 |
| Light color | 927 |
| Standard deviation of color matching | ≤ 4 sdcm |
| Rated peak intensity | 2800 cd |
| Rated LLMF at 6,000 h | 0.80 |



Light technical data

| | |
|------------------------------------|----------|
| Beam angle | 24 ° |
| Warm-up time (60 %) | < 0.50 s |
| Starting time | < 0.5 s |
| Rated beam angle (half peak value) | 24.00 ° |

Dimensions & Weight



| | |
|------------------|-----------|
| Overall length | 55.00 mm |
| Diameter | 111.00 mm |
| Maximum diameter | 111 mm |
| Product weight | 135.00 g |

Temperatures & operating conditions

| | |
|--------------------------------------|--------------|
| Ambient temperature range | -20...+40 °C |
| Maximum temperature at tc test point | 70 °C |

Lifespan

| | |
|-------------------------------------|---------|
| Nominal lamp life time | 40000 h |
| Number of switching cycles | 100000 |
| Lumen maintenance at end of serv | 0.70 |
| Rated lamp survival factor at 6,000 | ≥ 0.90 |

Additional product data

| | |
|-----------------------------|--|
| Base (standard designation) | G53 |
| Mercury content | 0.0 mg |
| Mercury-free | Yes |
| Product remark | All technical parameters apply to the entire lamp / Due to the complex production process for light-emitting diodes, the typical values shown for the technical LED parameters are purely statistical values that do not necessarily match the actual technical parameters of each individual product, which can vary from the typical value |

Capabilities

| | |
|----------|-----|
| Dimmable | Yes |
|----------|-----|

Certificates & Standards

| | |
|--|-----------------|
| Energy efficiency class | G ¹⁾ |
| Energy consumption | 12.00 kWh/1000h |
| Type of protection | IP20 |
| Standards | CE / EAC / CB |
| Photobiological safety group acc. to EN62778 | RG1 |

¹⁾ Energy efficiency class (EEC) on a scale of A (highest efficiency) to G (lowest efficiency)

Country-specific categorizations

| | |
|-----------------|-----------------|
| Order reference | LPAR111 7524 11 |
|-----------------|-----------------|

Energy labelling regulation data acc EU 2019/2015

| | |
|--|----------------|
| Lighting technology used | LED |
| Non-directional or directional | DLS |
| Mains or non-mains | NMLS |
| Light source cap-type (or other electric interface) | G53 |
| Connected light source (CLS) | No |
| Color-tuneable light source | No |
| Envelope | No |
| High luminance light source | No |
| Anti-glare shield | No |
| Correlated colour temperature type | SINGLE_VALUE |
| Claim of equivalent power | Yes |
| Length | 55.00 mm |
| Height | 111.00 mm |
| Width | 111.00 mm |
| Chromaticity coordinate x | 0.458 |
| Chromaticity coordinate y | 0.410 |
| R9 Colour rendering index | 1 |
| Beam angle | NARROW_CONE_90 |
| Survival factor | 0.90 |
| LED light source replaces a fluorescent light source | yes |
| EPREL ID | 522973 |

| | |
|--------------|---------|
| Model number | AC32801 |
|--------------|---------|

LOGISTICAL DATA

| Product code | Packaging unit (Pieces/Unit) | Dimensions (length x width x height) | Gross weight | Volume |
|---------------|------------------------------|--------------------------------------|--------------|----------------------|
| 4058075608559 | Folding box 1 | 113 mm x 66 mm x 113 mm | 191.00 g | 0.84 dm ³ |
| 4058075608566 | Shipping box 6 | 238 mm x 208 mm x 123 mm | 1274.00 g | 6.09 dm ³ |

The mentioned product code describes the smallest quantity unit which can be ordered. One shipping unit can contain one or more single products. When placing an order, for the quantity please enter single or multiples of a shipping unit.

References / Links

- For dimming conformity see www.ledvance.com/dim
- For Guarantee see www.ledvance.com/guarantee
- For further products and actual information concerning LED lamps see www.ledvance.com/ledlamps
- Further information see www.ledvance.com/low-voltage-ledlamps

DISCLAIMER

Subject to change without notice. Errors and omission excepted. Always make sure to use the most recent release.