



MASTER LEDtube T8 Ultra Efficient



MAS LEDtube 1200mm UE 13.5W 840 T8

With energy prices rising and the EU's Green Deal² continuing to fund energy efficient building renovations, many are looking into make their company's lighting more sustainable. The new Philips MASTER LEDtube Ultra Efficient T8 is a true breakthrough on the way to more sustainable lighting. It replaces your current fluorescent tube or LED tube directly and offers immediately great energy cost reduction as well as a much longer lifetime!

Product data

General Information	
Cap-Base	G13 ROT (Rotating) [Medium Bi-Pin Fluorescent]
Nominal lifetime	75,000 hour(s)
Switching Cycle	200,000
Lighting Technology	LED
Flux measurement reference	Sphere
CE mark	Yes
EU RoHS compliant	Yes
Light Technical	
Color Code	840 [CCT of 4000K]
Beam Angle (Nom)	160 degree(s)
Luminous Flux	2,500 lumen
Color Designation	Cool White (CW)
Correlated Color Temperature (Nom)	4000 K
Luminous Efficacy (rated) (Nom)	185 lm/W
Color Consistency	<6
Color rendering index (CRI)	80

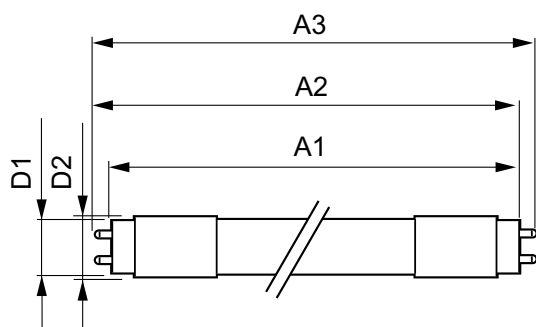
LLMF At End Of Nominal Lifetime (Nom)	70 %
Flickering value (PstLM)	0.5
Stroboscopic effect value (SVM)	0.2
Photobiological safety according to EN 62471	RG0
Operating and Electrical	
Line Frequency	50 to 60 Hz
Input Frequency	50 to 60 Hz
Power Consumption	13.5 W
Lamp Current (Max)	69 mA
Lamp Current (Min)	56 mA
Starting Time (Nom)	0.5 s
Warm-up time to 60% light	0.5 s
Power Factor (Fraction)	0.9
Voltage (Nom)	220-240 V
LED alternative to fluorescent lamp power	36 W
Temperature	
Ambient temperature range	-20 °C to 45 °C

MASTER LEDtube T8 Ultra Efficient

T-Case Maximum (Nom)	55 °C
Controls and Dimming	
Dimmable	No
Mechanical and Housing	
Bulb Finish	Frosted
Bulb Material	Plastic
Product Length	1,200 mm
Bulb Shape	Tube, double-ended
Approval and Application	
Energy Efficiency Class	B
Energy Saving Product	Yes
Approval Marks	RoHS compliance TUV CE marking KEMA Keur certificate

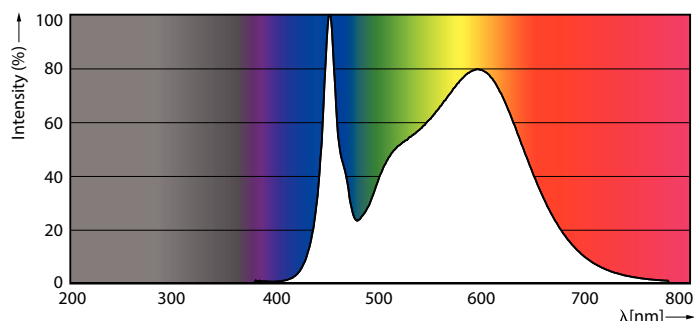
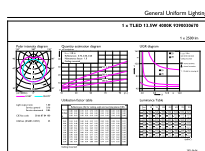
Energy Consumption kWh/1000 h	14 kWh
EPREL Registration Number	1205540
Product Data	
Full product code	871951433972900
Order product name	MAS LEDtube 1200mm UE 13.5W 840 T8
Order code	929003067002
Numerator - Quantity Per Pack	1
Numerator - Packs per outer box	10
Material Nr. (12NC)	929003067002
Full product name	MAS LEDtube 1200mm UE 13.5W 840 T8
EAN/UPC - Case	8719514339736
EAN/UPC - Product/Case	8719514339729

Dimensional drawing



Product	D1	D2	A1	A2	A3
MAS LEDtube 1200mm UE 13.5W	25.8 mm	28 mm	1,198.2 mm	1,205.3 mm	1,212.4 mm
840 T8					

Photometric data

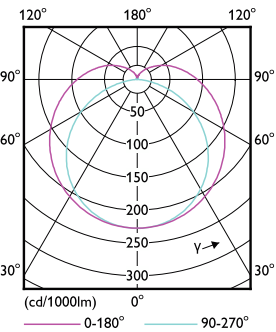


General uniform lighting - MAS LEDtube 1200mm UE 13.5W 840 T8

Spectral Power Distribution Colour - MAS LEDtube 1200mm UE 13.5W 840 T8

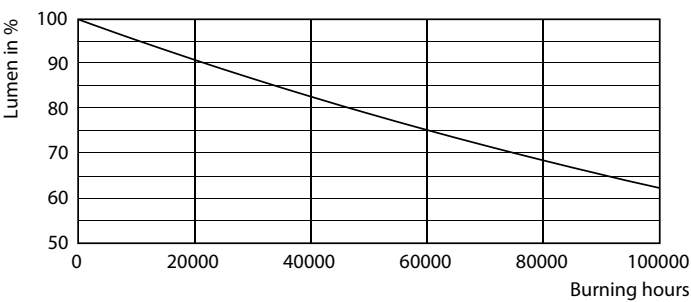
MASTER LEDtube T8 Ultra Efficient

Photometric data

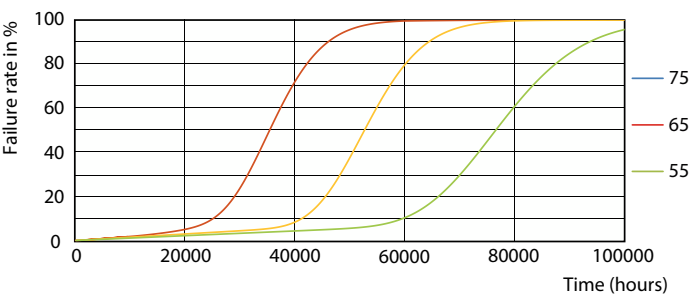


Light Distribution Diagram - MAS LEDtube 1200mm UE 13.5W 840 T8

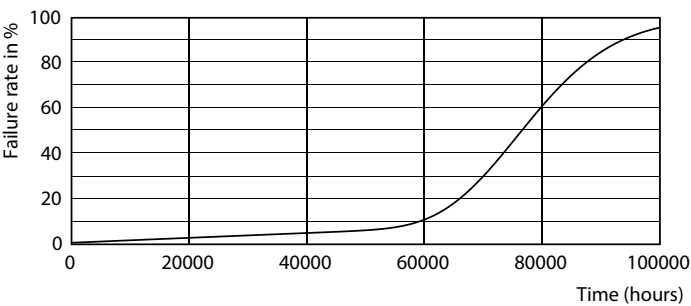
Lifetime



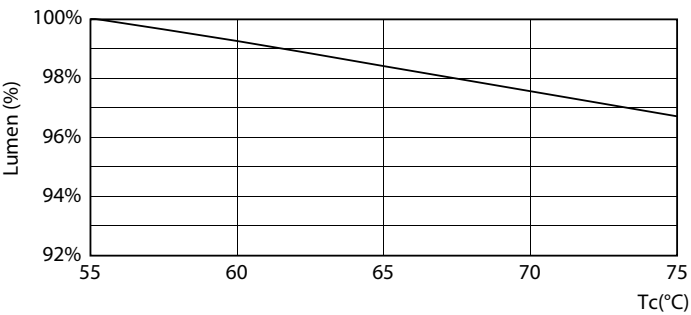
Lumen Maintenance Diagram - MAS LEDtube 1200mm UE 13.5W 840 T8



Life Expectancy Diagram - MAS LEDtube 1200mm UE 13.5W 840 T8



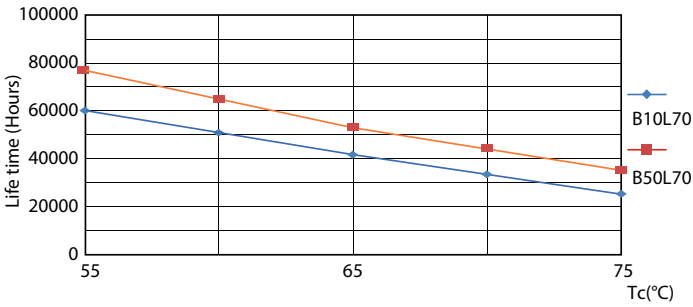
Life Expectancy Diagram - MAS LEDtube 1200mm UE 13.5W 840 T8



Lumen Maintenance Diagram - MAS LEDtube 1200mm UE 13.5W 840 T8

MASTER LEDtube T8 Ultra Efficient

Lifetime



Life Expectancy Diagram - MAS LEDtube 1200mm UE 13.5W 840 T8

