

## Technical Information

No. FO 6100

Edition: 04/22 - subject to change

Supersedes: n/a

Status: valid

## Mercury Discharge Lamp

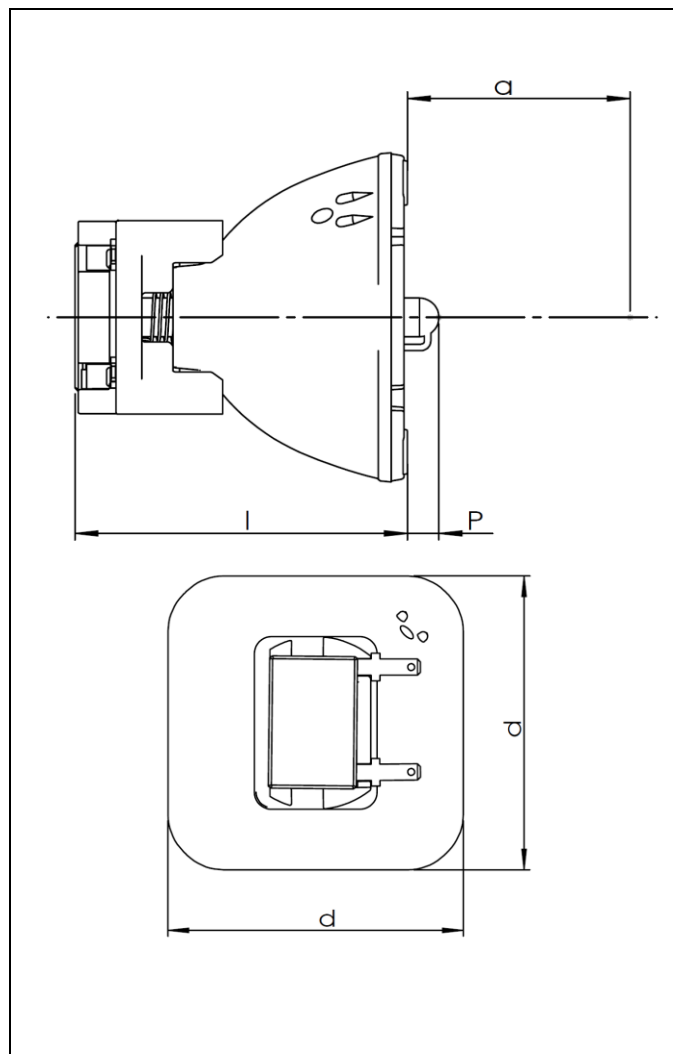
# SIRIUS HRI 295W

### ■ Product description

The OSRAM SIRIUS HRI® 295W with its focusing dichroic reflector is highly efficient and optimized for entertainment fixtures. The distance between the reflector's alignment plane and the second focal point (working distance) is 34.5mm. Main applications of the OSRAM SIRIUS HRI® 295W are moving head projectors.

### ■ Technical data

Order reference	SIRIUS HRI® 295W	
Rated lamp wattage	W	295
Rated lamp voltage	V	70
Rated lamp current	A	4.2
Ignition voltage	kV <sub>s</sub>	2.5
Color temperature	K	8000
Electrode gap	mm	0.9
Lamp length l	mm	max. 53.5
Burner excess P	mm	max. 9
Reflector diameter d	mm	51
Working distance a	mm	34.5
Average service life	h	2000
Initial luminous flux (D6)	lm	14000
CRI		84



### ■ Lamp operation

Burning position	any
Electrical connection	flat pin connectors, Tyco FASTON® 110 compatible.
Cooling	Forced and controlled cooling required (refer to system specification). Insufficient cooling can influence the light output, lifetime, and maintenance behaviour.
Lamp driver	OSRAM SIRIUS HRI® 295W was tested successfully on lamp driver PT-SIRIUS HRI 295W from OSRAM SIRIUS HRI®. Drivers of other makers can influence the light output, lifetime, and maintenance behaviour.

# OSRAM