



MASTER LEDtube InstantFit HF T8



MAS LEDtube HF 1500mm UO 24W840 T8

Philips MASTER LEDtube InstantFit T8 integrates a LED light source into a traditional fluorescent form factor. Its unique design creates a perfectly uniform visual appearance which cannot be distinguished from traditional fluorescent. Philips MASTER LEDtube InstantFit T8 is the ideal solution for customers who have higher light requirements and want to maximize value over lifetime. Full energy savings & longer lifetime result in attractive payback times and TCO benefits.

Warnings and Safety

- NOTES: The overall energy efficiency and light distribution of any installation that uses these lamps are determined by the design of the installation.

Product data

General Information			
Cap-Base	G13 ROT (Rotating) [Medium Bi-Pin Fluorescent]	Correlated Color Temperature (Nom)	4000 K
Nominal lifetime	75,000 hour(s)	Luminous Efficacy (rated) (Nom)	154 lm/W
Switching Cycle	50,000	Color Consistency	<6
Lighting Technology	LED	Color rendering index (CRI)	80
Flux measurement reference	Sphere	LLMF At End Of Nominal Lifetime (Nom)	70 %
CE mark	Yes	Flickering value (PstLM)	0.5
EU RoHS compliant	Yes	Stroboscopic effect value (SVM)	0.2
		Photobiological safety according to EN 62471	RGO
Light Technical		Operating and Electrical	
Color Code	840 [CCT of 4000K]	Line Frequency	20000-75000 Hz
Beam Angle (Nom)	160 degree(s)	Input Frequency	20000-75000 Hz
Luminous Flux	3,700 lumen	Power Consumption	24 W
Color Designation	Cool White (CW)	Lamp Current (Max)	750 mA
		Lamp Current (Min)	300 mA

MASTER LEDtube InstantFit HF T8

Starting Time (Nom)	0.5 s
Warm-up time to 60% light	0.5 s
Power Factor (Fraction)	0.9
Voltage (Nom)	30–80 V
LED alternative to fluorescent lamp power	58 W

Temperature

Ambient temperature range	–20 °C to 45 °C
T-Case Maximum (Nom)	55 °C

Controls and Dimming

Dimmable	Yes – Check ballast compatibility
----------	-----------------------------------

Mechanical and Housing

Bulb Finish	Frosted
Bulb Material	Plastic
Product Length	1,500 mm
Bulb Shape	Tube, double-ended

Approval and Application

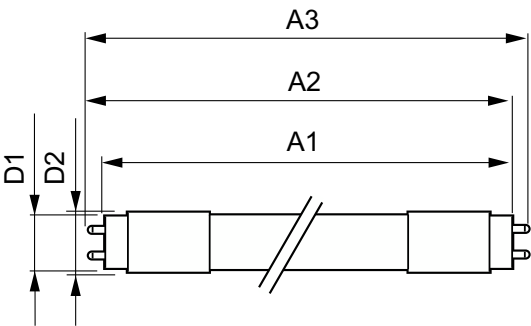
Energy Efficiency Class	D
-------------------------	---

Energy Saving Product	Yes
Approval Marks	RoHS compliance TUV CE marking KEMA Keur certificate
Energy Consumption kWh/1000 h	24 kWh
EPREL Registration Number	1165512

Product Data

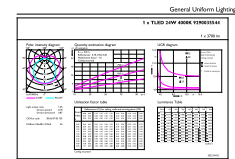
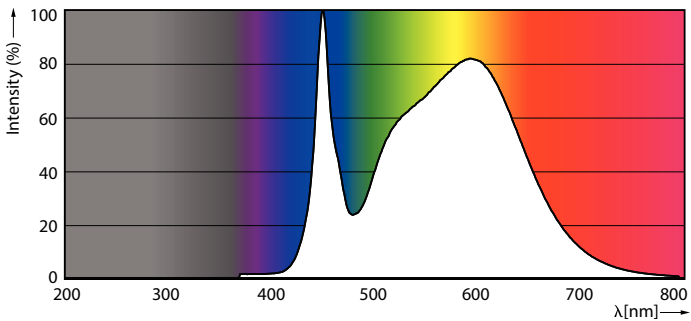
Full product code	871951446702600
Order product name	MAS LEDtube HF 1500mm UO 24W840 T8
Order code	929003554402
Numerator - Quantity Per Pack	1
Numerator - Packs per outer box	20
Material Nr. (12NC)	929003554402
Full product name	MAS LEDtube HF 1500mm UO 24W840 T8
EAN/UPC - Case	8719514467033
EAN/UPC - Product/Case	8719514467026

Dimensional drawing



Product	D1	D2	A1	A2	A3
MAS LEDtube HF 1500mm UO 24W840 T8	25.8 mm	28 mm	1,498.8 mm	1,505.9 mm	1,513 mm

Photometric data

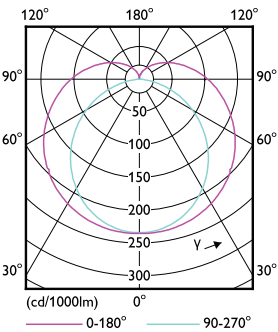


Spectral Power Distribution Colour - MAS LEDtube HF 1500mm UO 24W840 T8

General uniform lighting - MAS LEDtube HF 1500mm UO 24W840 T8

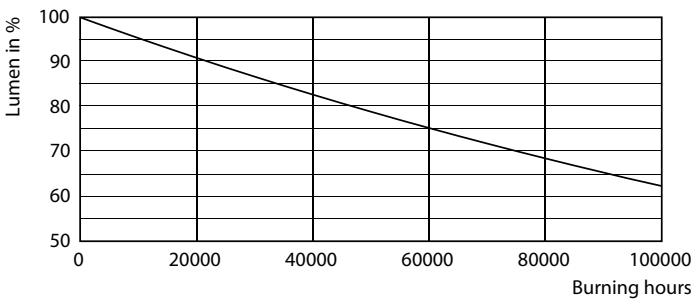
MASTER LEDtube InstantFit HF T8

Photometric data

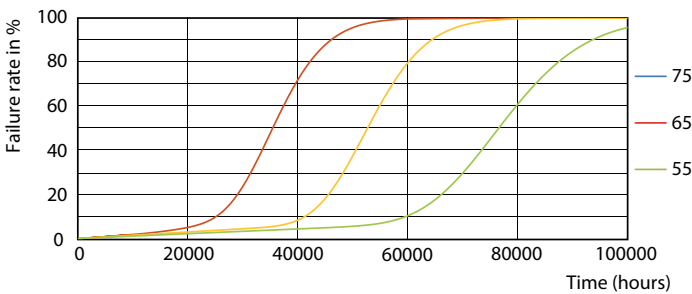


Light Distribution Diagram - MAS LEDtube HF 1500mm UO 24W840 T8

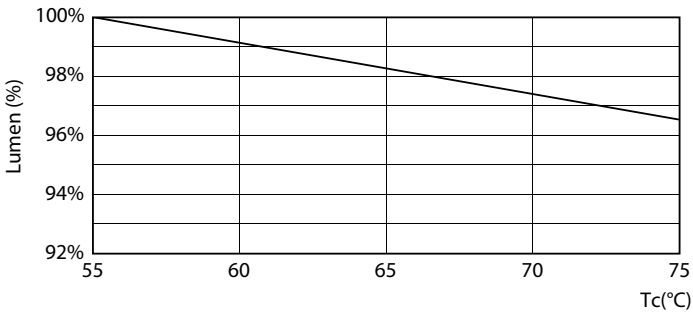
Lifetime



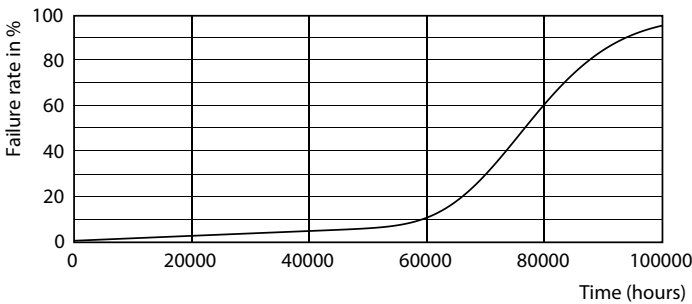
Lumen Maintenance Diagram - MAS LEDtube HF 1500mm UO 24W840 T8



Life Expectancy Diagram - MAS LEDtube HF 1500mm UO 24W840 T8



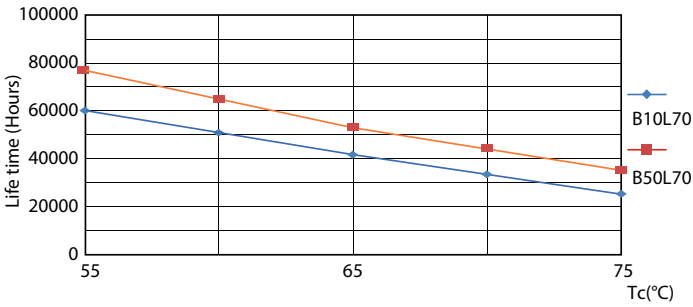
Lumen Maintenance Diagram - MAS LEDtube HF 1500mm UO 24W840 T8



Life Expectancy Diagram - MAS LEDtube HF 1500mm UO 24W840 T8

MASTER LEDtube InstantFit HF T8

Lifetime



Life Expectancy Diagram - MAS LEDtube HF 1500mm UO 24W840 T8

