



# CoreLine Wall-mounted

## WL140V LED20S/830 WIA WH

CoreLine Wall-mounted, 22 W, D390 mm, 2100 lumen, 3000 K, Wireless, Interact Ready, IP65

CoreLine wall-mounted solutions deliver on the CoreLine promise of innovative, easy-to-install and high quality luminaires. These circular-shaped, surface-mounted luminaires are suitable for both ceiling and wall installations and are easy to apply in circulation areas such as corridors, hallways and staircases. The modern, unobtrusive design, combined with a homogeneous light distribution, ensures this luminaire will blend into the architecture of most buildings. And thanks to the push-in connectors, installation of the CoreLine WL140V is fast and straightforward. This family includes Interact ready luminaires with integrated wireless communications, ready for use with Interact gateways, sensors and software.

### Product data

General Information		Light Technical	
Light source replaceable	No	Glow-wire test	Temperature 850 °C, duration 30 s
Number of gear units	1 unit	EU RoHS compliant	Yes
Driver included	Yes	Luminous Flux	2,100 lumen
Product family code	WL140V [Coreline Gen3 Wall Luminaire]	Saturated Red (R9)	<50
Connectivity	Interact Ready	Correlated Color Temperature (Nom)	3000 K
Lighting Technology	LED	Luminous Efficacy (rated) (Nom)	95 lm/W
Value ladder	Performance	Color rendering index (CRI)	>80
CE mark	Yes	Flickering value (PstLM)	1
Warranty period	5 years	Stroboscopic effect value (SVM)	1.6
Flammability mark	-	Beam angle of light source	120 degree(s)
ENEC mark	ENEC mark		

## CoreLine Wall-mounted

Light source color	830 warm white
Optic type	Symmetrical
Luminaire light beam spread	120° x 120°
Unified glare rating CEN	24

### Operating and Electrical

Input Voltage	220–240 V
Line Frequency	50 or 60 Hz
Initial CLO power consumption	– W
Average CLO power consumption	– W
Inrush current	4.9 A
Inrush time	0.0057 ms
Power Consumption	22 W
Power Factor (Fraction)	0.9
Connection	Push-in connector 6-pole
Cable	–
Number of products on MCB of 16 A type B	24

### Temperature

Ambient temperature range	–20 to +35 °C
---------------------------	---------------

### Controls and Dimming

Dimmable	Yes
Driver/power unit/transformer	Wireless driver Interact System ready
Control interface	Wireless
Constant light output	No

### Mechanical and Housing

Housing Material	Polycarbonate
Reflector material	Polycarbonate
Optic material	Polycarbonate
Optical cover/lens material	Polycarbonate
Fixation material	–
Housing Color	White
Optical cover/lens finish	Opal
Overall height	85 mm
Overall diameter	390 mm

### Approval and Application

Ingress protection code	IP65 [Dust penetration-protected, jet-proof]
Mech. impact protection code	IK10 [20 J vandal-resistant]
Sustainability rating	–
Protection class IEC	Safety class II
Photobiological risk	Photobiological risk group 0 @200mm to EN62778
Photobiological risk specification	0.2 m

### Initial Performance (IEC Compliant)

Initial chromaticity	(0.4338,0.4030) SDCM <3
Luminous flux tolerance	+/-10%
Power consumption tolerance	+/-10%

### Over Time Performance (IEC Compliant)

Control gear failure rate at median useful life 50000 h	5 %
Lumen maintenance at median useful life* 50000 h	80

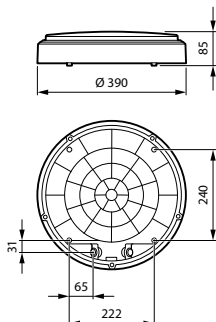
### Application Conditions

Maximum dim level	1%
Performance ambient temperature Tq	25 °C
Suitable for random switching	No

### Product Data

Full product code	871869997860000
Order product name	WL140V LED20S/830 WIA WH
Order code	910505101546
Numerator - Quantity Per Pack	1
Numerator - Packs per outer box	1
Material Nr. (12NC)	910505101546
Full product name	WL140V LED20S/830 WIA WH
EAN/UPC - Case	8718699978600
EAN/UPC - Product/Case	8718699978600

## Dimensional drawing



## CoreLine Wall-mounted

