



CoreLine Wall-mounted

WL140V LED34S/830 WIA ELB3 WH

CoreLine Wall-mounted, 38.5 W, D390 mm, 3350 lumen, 3000 K, Wireless, Interact Ready, IP65, ELB3h

CoreLine wall-mounted solutions deliver on the CoreLine promise of innovative, easy-to-install and high quality luminaires. These circular-shaped, surface-mounted luminaires are suitable for both ceiling and wall installations and are easy to apply in circulation areas such as corridors, hallways and staircases. The modern, unobtrusive design, combined with a homogeneous light distribution, ensures this luminaire will blend into the architecture of most buildings. And thanks to the push-in connectors, installation of the CoreLine WL140V is fast and straightforward. This family includes Interact ready luminaires with integrated wireless communications, ready for use with Interact gateways, sensors and software.

Product data

General Information			
Light source replaceable	No	Glow-wire test	Temperature 850 °C, duration 30 s
Number of gear units	1 unit	EU RoHS compliant	Yes
Driver included	Yes	Light Technical	
Product family code	WL140V [Coreline Gen3 Wall Luminaire]	Luminous Flux	3,350 lumen
Connectivity	Interact Ready	Saturated Red (R9)	<50
Lighting Technology	LED	Correlated Color Temperature (Nom)	3000 K
Value ladder	Performance	Luminous Efficacy (rated) (Nom)	87 lm/W
CE mark	Yes	Color rendering index (CRI)	>80
Warranty period	5 years	Flickering value (PstLM)	1
Flammability mark	-	Stroboscopic effect value (SVM)	1.6
ENEC mark	ENEC mark	Beam angle of light source	120 degree(s)

CoreLine Wall-mounted

Light source color	830 warm white
Optic type	Symmetrical
Luminaire light beam spread	120° x 120°
Unified glare rating CEN	25

Operating and Electrical

Input Voltage	220-240 V
Line Frequency	50 or 60 Hz
Initial CLO power consumption	- W
Average CLO power consumption	- W
Inrush current	4.9 A
Inrush time	0.0057 ms
Power Consumption	38.5 W
Power Factor (Fraction)	0.9
Connection	Push-in connector 6-pole
Cable	-
Number of products on MCB of 16 A type B	24

Temperature

Ambient temperature range	0 to +25 °C
---------------------------	-------------

Controls and Dimming

Dimmable	Yes
Driver/power unit/transformer	Wireless driver Interact System ready
Control interface	Wireless
Constant light output	No

Mechanical and Housing

Housing Material	Polycarbonate
Reflector material	Polycarbonate
Optic material	Polycarbonate
Optical cover/lens material	Polycarbonate
Fixation material	-
Housing Color	White
Optical cover/lens finish	Opal
Overall height	85 mm
Overall diameter	390 mm

Approval and Application

Ingress protection code	IP65 [Dust penetration-protected, jet-proof]
Mech. impact protection code	IK10 [20 J vandal-resistant]
Sustainability rating	-
Protection class IEC	Safety class II
Photobiological risk	Photobiological risk group 0 @200mm to EN62778
Photobiological risk specification	0.2 m

Initial Performance (IEC Compliant)

Initial chromaticity	(0.4338,0.4030) SDCM <3
Luminous flux tolerance	+/-10%
Power consumption tolerance	+/-10%

Over Time Performance (IEC Compliant)

Control gear failure rate at median useful life	5 %
50000 h	
Lumen maintenance at median useful life*	80
50000 h	

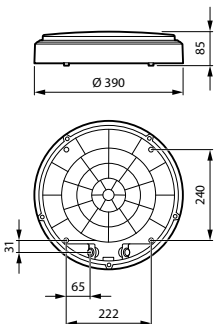
Application Conditions

Maximum dim level	1%
Performance ambient temperature Tq	25 °C
Suitable for random switching	No

Product Data

Full product code	871869997878500
Order product name	WL140V LED34S/830 WIA ELB3 WH
Order code	910505101564
Numerator - Quantity Per Pack	1
Numerator - Packs per outer box	1
Material Nr. (12NC)	910505101564
Full product name	WL140V LED34S/830 WIA ELB3 WH
EAN/UPC - Case	8718699978785
EAN/UPC - Product/Case	8718699978785

Dimensional drawing



CoreLine Wall-mounted

