



LuxSpace, surface mounted

DN570C LED20S/840 DIA-VLC-E C WH

LuxSpace, surface mounted, Surface-mounted, 14.8 W, D250 mm, 2200 lumen, 4000 K, DALI, Interact Ready, High-gloss reflector, IP20

Customers are looking to optimize all their resources, and that means not just their running costs (energy, etc.) but also their human resources. Energy savings are therefore a priority, but they must not have an adverse effect on the well-being of employees, who need a pleasant environment in order to be more productive, or on customers, who want to enjoy their shopping experience. LuxSpace provides the perfect combination of efficiency, light comfort and design, without compromising on lighting performance (color rendering and color uniformity). It offers a wide choice of options for creating the desired ambience, no matter the application.

Product data

General Information	
Light source replaceable	No
Number of gear units	1 unit
Driver included	Yes
Service tag	Yes
Product family code	DN570C [LUXSPACE 2 COMPACT LOW HEIGHT]
Connectivity	Interact Ready
Lighting Technology	LED
Value ladder	Specification
CE mark	Yes

Warranty period	5 years
Flammability mark	For mounting on normally flammable surfaces
ENEC mark	ENEC mark
Glow-wire test	Temperature 850 °C, duration 5 s
EU RoHS compliant	Yes
Light Technical	
Luminous Flux	2,200 lumen
Correlated Color Temperature (Nom)	4000 K
Luminous Efficacy (rated) (Nom)	149 lm/W

LuxSpace, surface mounted

Color rendering index (CRI)	>80
Light source color	840 neutral white
Optic type	-
Luminaire light beam spread	80°
Unified glare rating CEN	22

Operating and Electrical

Line Frequency	50 to 60 Hz
Input Voltage	220 to 240 V
Inrush current	16 A
Inrush time	0.195 ms
Power Consumption	14.8 W
Power Factor (Fraction)	0.9
Connection	Push-in connector and pull relief
Cable	-
Number of products on MCB of 16 A type B	24

Temperature

Ambient temperature range	+10 to +25 °C
---------------------------	---------------

Controls and Dimming

Dimmable	Yes
Driver/power unit/transformer	Power supply unit with DALI interface and constant light output, external
Control interface	DALI
Constant light output	No

Mechanical and Housing

Housing Material	Aluminum die cast
Reflector material	Polycarbonate aluminum coated
Optic material	Polycarbonate
Optical cover/lens material	Polycarbonate
Fixation material	Steel
Housing Color	White
Optical cover/lens finish	-
Reflector Finish	High-gloss reflector
Overall height	215 mm

Overall diameter	250 mm
------------------	--------

Approval and Application

Ingress protection code	IP20 [Finger-protected]
Mech. impact protection code	IK02 [0.2 J standard]
Sustainability rating	-
Protection class IEC	Safety class I

Initial Performance (IEC Compliant)

Initial chromaticity	(0.38, 0.38) SDCM <2
Luminous flux tolerance	+/-10%
Power consumption tolerance	+/-10%

Over Time Performance (IEC Compliant)

Control gear failure rate at median useful life 50000 h	5 %
Lumen maintenance at median useful life* 50000 h	L90

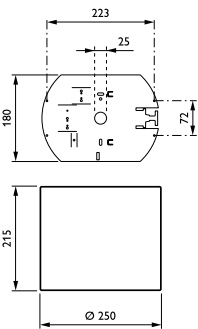
Application Conditions

Maximum dim level	1%
Performance ambient temperature Tq	25 °C
Suitable for random switching	Yes

Product Data

Full product code	871869997093200
Order product name	DN570C LED20S/840 DIA-VLC-E C WH
Order code	910505100964
Numerator - Quantity Per Pack	1
Numerator - Packs per outer box	1
Material Nr. (12NC)	910505100964
Full product name	DN570C LED20S/840 DIA-VLC-E C WH
EAN/UPC - Case	8718699970932
EAN/UPC - Product/Case	8718699970932

Dimensional drawing



LuxSpace, surface mounted

