



LuxSpace, surface mounted

DN570C LED24S/830 DIA-VLC-E C WH

LuxSpace, surface mounted, Surface-mounted, 20 W, D250 mm, 2600 lumen, 3000 K, DALI, Interact Ready, High-gloss reflector, IP20

Customers are looking to optimize all their resources, and that means not just their running costs (energy, etc.) but also their human resources. Energy savings are therefore a priority, but they must not have an adverse effect on the well-being of employees, who need a pleasant environment in order to be more productive, or on customers, who want to enjoy their shopping experience. LuxSpace provides the perfect combination of efficiency, light comfort and design, without compromising on lighting performance (color rendering and color uniformity). It offers a wide choice of options for creating the desired ambience, no matter the application.

Product data

| General Information | | Warranty period | |
|--------------------------|--|------------------------------------|---|
| Light source replaceable | No | Flammability mark | 5 years |
| Number of gear units | 1 unit | Flammability mark | For mounting on normally flammable surfaces |
| Driver included | Yes | ENEC mark | ENEC mark |
| Service tag | Yes | Glow-wire test | Temperature 850 °C, duration 5 s |
| Product family code | DN570C [LUXSPACE 2 COMPACT LOW HEIGHT] | EU RoHS compliant | Yes |
| Connectivity | Interact Ready | Light Technical | |
| Lighting Technology | LED | Luminous Flux | 2,600 lumen |
| Value ladder | Specification | Correlated Color Temperature (Nom) | 3000 K |
| CE mark | Yes | Luminous Efficacy (rated) (Nom) | 130 lm/W |

LuxSpace, surface mounted

| | |
|-----------------------------|----------------|
| Color rendering index (CRI) | >80 |
| Light source color | 830 warm white |
| Optic type | - |
| Luminaire light beam spread | 80° |
| Unified glare rating CEN | 22 |

Operating and Electrical

| | |
|--|-----------------------------------|
| Line Frequency | 50 to 60 Hz |
| Input Voltage | 220 to 240 V |
| Inrush current | 16 A |
| Inrush time | 0.195 ms |
| Power Consumption | 20 W |
| Power Factor (Fraction) | 0.9 |
| Connection | Push-in connector and pull relief |
| Cable | - |
| Number of products on MCB of 16 A type B | 24 |

Temperature

| | |
|---------------------------|---------------|
| Ambient temperature range | +10 to +25 °C |
|---------------------------|---------------|

Controls and Dimming

| | |
|-------------------------------|---|
| Dimmable | Yes |
| Driver/power unit/transformer | Power supply unit with DALI interface and constant light output, external |
| Control interface | DALI |
| Constant light output | No |

Mechanical and Housing

| | |
|-----------------------------|-------------------------------|
| Housing Material | Aluminum die cast |
| Reflector material | Polycarbonate aluminum coated |
| Optic material | Polycarbonate |
| Optical cover/lens material | Polycarbonate |
| Fixation material | Steel |
| Housing Color | White |
| Optical cover/lens finish | - |
| Reflector Finish | High-gloss reflector |
| Overall height | 215 mm |

| | |
|------------------|--------|
| Overall diameter | 250 mm |
|------------------|--------|

Approval and Application

| | |
|------------------------------|-------------------------|
| Ingress protection code | IP20 [Finger-protected] |
| Mech. impact protection code | IK02 [0.2 J standard] |
| Sustainability rating | - |
| Protection class IEC | Safety class I |

Initial Performance (IEC Compliant)

| | |
|-----------------------------|----------------------|
| Initial chromaticity | (0.43, 0.40) SDCM <2 |
| Luminous flux tolerance | +/-10% |
| Power consumption tolerance | +/-10% |

Over Time Performance (IEC Compliant)

| | |
|---|-----|
| Control gear failure rate at median useful life 50000 h | 5 % |
| Lumen maintenance at median useful life* 50000 h | L90 |

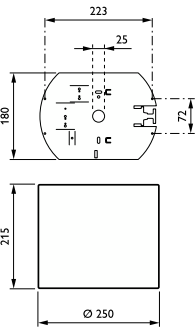
Application Conditions

| | |
|------------------------------------|-------|
| Maximum dim level | 1% |
| Performance ambient temperature Tq | 25 °C |
| Suitable for random switching | Yes |

Product Data

| | |
|---------------------------------|----------------------------------|
| Full product code | 871869997098700 |
| Order product name | DN570C LED24S/830 DIA-VLC-E C WH |
| Order code | 910505100969 |
| Numerator - Quantity Per Pack | 1 |
| Numerator - Packs per outer box | 1 |
| Material Nr. (12NC) | 910505100969 |
| Full product name | DN570C LED24S/830 DIA-VLC-E C WH |
| EAN/UPC - Case | 8718699970987 |
| EAN/UPC - Product/Case | 8718699970987 |

Dimensional drawing



LuxSpace, surface mounted

