



LuxSpace, surface mounted

DN570C LED40S/830 PSU-E C WH

LuxSpace, surface mounted, Surface-mounted, 33 W, D250 mm, 4400 lumen, 3000 K, High-gloss reflector, IP20

Customers are looking to optimize all their resources, and that means not just their running costs (energy, etc.) but also their human resources. Energy savings are therefore a priority, but they must not have an adverse effect on the well-being of employees, who need a pleasant environment in order to be more productive, or on customers, who want to enjoy their shopping experience. LuxSpace provides the perfect combination of efficiency, light comfort and design, without compromising on lighting performance (color rendering and color uniformity). It offers a wide choice of options for creating the desired ambience, no matter the application.

Product data

General Information		ENEC mark	
Light source replaceable	No	Glow-wire test	Temperature 850 °C, duration 5 s
Number of gear units	1 unit	EU RoHS compliant	Yes
Driver included	Yes	Light Technical	
Service tag	Yes	Luminous Flux	4,400 lumen
Product family code	DN570C [LUXSPACE 2 COMPACT LOW HEIGHT]	Correlated Color Temperature (Nom)	3000 K
Lighting Technology	LED	Luminous Efficacy (rated) (Nom)	133 lm/W
Value ladder	Specification	Color rendering index (CRI)	>80
CE mark	Yes	Light source color	830 warm white
Warranty period	5 years	Optic type	-
Flammability mark	For mounting on normally flammable surfaces	Luminaire light beam spread	80°

LuxSpace, surface mounted

Unified glare rating CEN	22
--------------------------	----

Operating and Electrical	
Line Frequency	50 to 60 Hz
Input Voltage	220 to 240 V
Inrush current	20.4 A
Inrush time	0.195 ms
Power Consumption	33 W
Power Factor (Fraction)	0.9
Connection	Push-in connector and pull relief
Cable	-
Number of products on MCB of 16 A type B	24

Temperature

Ambient temperature range	+10 to +25 °C
---------------------------	---------------

Controls and Dimming

Dimmable	No
Driver/power unit/transformer	Power supply unit external (On/Off)
Control interface	-
Constant light output	No

Mechanical and Housing

Housing Material	Aluminum die cast
Reflector material	Polycarbonate aluminum coated
Optic material	Polycarbonate
Optical cover/lens material	Polycarbonate
Fixation material	Steel
Housing Color	White
Optical cover/lens finish	-
Reflector Finish	High-gloss reflector
Overall height	215 mm
Overall diameter	250 mm

Approval and Application

Ingress protection code	IP20 [Finger-protected]
Mech. impact protection code	IK02 [0.2 J standard]
Sustainability rating	-
Protection class IEC	Safety class I

Initial Performance (IEC Compliant)

Initial chromaticity	(0.43, 0.40) SDCM <2
Luminous flux tolerance	+/-10%
Power consumption tolerance	+/-10%

Over Time Performance (IEC Compliant)

Control gear failure rate at median useful life	5 %
50000 h	
Lumen maintenance at median useful life*	L90
50000 h	

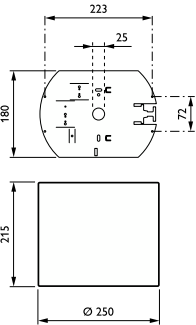
Application Conditions

Performance ambient temperature Tq	25 °C
Suitable for random switching	Yes

Product Data

Full product code	871869997102100
Order product name	DN570C LED40S/830 PSU-E C WH
Order code	910505100973
Numerator - Quantity Per Pack	1
Numerator - Packs per outer box	1
Material Nr. (12NC)	910505100973
Full product name	DN570C LED40S/830 PSU-E C WH
EAN/UPC - Case	8718699971021
EAN/UPC - Product/Case	8718699971021

Dimensional drawing



LuxSpace, surface mounted

