



LuxSpace, surface mounted

DN570C LED40S/840 PSU-E C WH

LuxSpace, surface mounted, Surface-mounted, 30 W, D250 mm, 4400 lumen, 4000 K, High-gloss reflector, IP20

Customers are looking to optimize all their resources, and that means not just their running costs (energy, etc.) but also their human resources. Energy savings are therefore a priority, but they must not have an adverse effect on the well-being of employees, who need a pleasant environment in order to be more productive, or on customers, who want to enjoy their shopping experience. LuxSpace provides the perfect combination of efficiency, light comfort and design, without compromising on lighting performance (color rendering and color uniformity). It offers a wide choice of options for creating the desired ambience, no matter the application.

Product data

General Information		Light Technical	
Light source replaceable	No	Luminous Flux	4,400 lumen
Number of gear units	1 unit	Correlated Color Temperature (Nom)	4000 K
Driver included	Yes	Luminous Efficacy (rated) (Nom)	147 lm/W
Service tag	Yes	Color rendering index (CRI)	>80
Product family code	DN570C [LUXSPACE 2 COMPACT LOW HEIGHT]	Light source color	840 neutral white
Lighting Technology	LED	Optic type	-
Value ladder	Specification	Luminaire light beam spread	80°
CE mark	Yes		
Warranty period	5 years		
Flammability mark	For mounting on normally flammable surfaces		
ENEC mark	ENEC mark		
Glow-wire test	Temperature 850 °C, duration 5 s		
EU RoHS compliant	Yes		

LuxSpace, surface mounted

Unified glare rating CEN	22
--------------------------	----

Operating and Electrical	
Line Frequency	50 to 60 Hz
Input Voltage	220 to 240 V
Inrush current	20.4 A
Inrush time	0.195 ms
Power Consumption	30 W
Power Factor (Fraction)	0.9
Connection	Push-in connector and pull relief
Cable	-
Number of products on MCB of 16 A type B	24

Temperature	
Ambient temperature range	+10 to +25 °C

Controls and Dimming	
Dimmable	No
Driver/power unit/transformer	Power supply unit external (On/Off)
Control interface	-
Constant light output	No

Mechanical and Housing	
Housing Material	Aluminum die cast
Reflector material	Polycarbonate aluminum coated
Optic material	Polycarbonate
Optical cover/lens material	Polycarbonate
Fixation material	Steel
Housing Color	White
Optical cover/lens finish	-
Reflector Finish	High-gloss reflector
Overall height	215 mm
Overall diameter	250 mm

Approval and Application	
Ingress protection code	IP20 [Finger-protected]
Mech. impact protection code	IK02 [0.2 J standard]
Sustainability rating	-
Protection class IEC	Safety class I

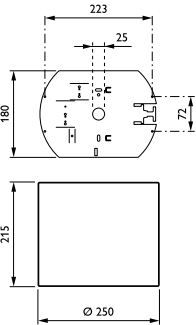
Initial Performance (IEC Compliant)	
Initial chromaticity	(0.38, 0.38) SDCM <2
Luminous flux tolerance	+/-10%
Power consumption tolerance	+/-10%

Over Time Performance (IEC Compliant)	
Control gear failure rate at median useful life 50000 h	5 %
Lumen maintenance at median useful life* 50000 h	L90

Application Conditions	
Performance ambient temperature Tq	25 °C
Suitable for random switching	Yes

Product Data	
Full product code	871869997103800
Order product name	DN570C LED40S/840 PSU-E C WH
Order code	910505100974
Numerator - Quantity Per Pack	1
Numerator - Packs per outer box	1
Material Nr. (12NC)	910505100974
Full product name	DN570C LED40S/840 PSU-E C WH
EAN/UPC - Case	8718699971038
EAN/UPC - Product/Case	8718699971038

Dimensional drawing



LuxSpace, surface mounted

