



# LuxSpace, surface mounted

## DN571C LED20S/830 DIA-VLC-E C WH

LuxSpace, surface mounted, Surface-mounted, 16.4 W, 2200 lumen, 3000 K, DALI, Interact Ready, UGR19, High-gloss reflector, IP20

Customers are looking to optimize all their resources, and that means not just their running costs (energy, etc.) but also their human resources. Energy savings are therefore a priority, but they must not have an adverse effect on the well-being of employees, who need a pleasant environment in order to be more productive, or on customers, who want to enjoy their shopping experience. LuxSpace provides the perfect combination of efficiency, light comfort and design, without compromising on lighting performance (color rendering and color uniformity). It offers a wide choice of options for creating the desired ambience, no matter the application.

### Product data

General Information		Flammability mark	
Light source replaceable	No	For mounting on normally flammable surfaces	
Number of gear units	1 unit	ENEC mark	
Driver included	Yes	Glow-wire test	
Service tag	Yes	Temperature 850 °C, duration 5 s	
Product family code	DN571C [LUXSPACE 2 COMPACT DEEP]	EU RoHS compliant	
Connectivity	Interact Ready	Yes	
Lighting Technology	LED	Light Technical	
Value ladder	Specification	Luminous Flux	
CE mark	Yes	2,200 lumen	
Warranty period	5 years	Correlated Color Temperature (Nom)	
		3000 K	
		Luminous Efficacy (rated) (Nom)	
		134 lm/W	
		Color rendering index (CRI)	
		>80	

LuxSpace, surface mounted

Light source color	830 warm white
Optic type	-
Luminaire light beam spread	75°
Unified glare rating CEN	19

Operating and Electrical

Line Frequency	50 to 60 Hz
Input Voltage	220 to 240 V
Inrush current	16 A
Inrush time	0.195 ms
Power Consumption	16.4 W
Power Factor (Fraction)	0.9
Connection	Push-in connector and pull relief
Cable	-
Number of products on MCB of 16 A type B	24

Temperature

Ambient temperature range	+10 to +25 °C
---------------------------	---------------

Controls and Dimming

Dimmable	Yes
Driver/power unit/transformer	Power supply unit with DALI interface and constant light output, external
Control interface	DALI
Constant light output	No

Mechanical and Housing

Housing Material	Aluminum die cast
Reflector material	Polycarbonate aluminum coated
Optic material	Polycarbonate
Optical cover/lens material	Polycarbonate
Fixation material	Steel
Housing Color	White
Optical cover/lens finish	-
Reflector Finish	High-gloss reflector
Overall height	215 mm

Overall diameter	250 mm
------------------	--------

Approval and Application

Ingress protection code	IP20 [Finger-protected]
Mech. impact protection code	IK02 [0.2 J standard]
Sustainability rating	-
Protection class IEC	Safety class I

Initial Performance (IEC Compliant)

Initial chromaticity	(0.43, 0.40) SDCM <2
Luminous flux tolerance	+/-10%
Power consumption tolerance	+/-10%

Over Time Performance (IEC Compliant)

Control gear failure rate at median useful life 50000 h	5 %
Lumen maintenance at median useful life* 50000 h	L90

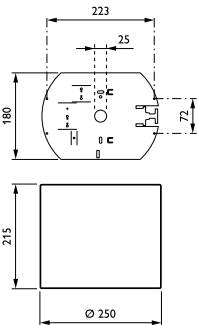
Application Conditions

Maximum dim level	1%
Performance ambient temperature Tq	25 °C
Suitable for random switching	Yes

Product Data

Full product code	871869997094900
Order product name	DN571C LED20S/830 DIA-VLC-E C WH
Order code	910505100965
Numerator - Quantity Per Pack	1
Numerator - Packs per outer box	1
Material Nr. (12NC)	910505100965
Full product name	DN571C LED20S/830 DIA-VLC-E C WH
EAN/UPC - Case	8718699970949
EAN/UPC - Product/Case	8718699970949

Dimensional drawing



## LuxSpace, surface mounted

