



MASTER LEDtube Mains T5



MAS LEDtube 1500mm HE 20W 865 T5 EU

The new Philips Master LEDtube Mains T5 brings simplicity to your lighting project. You don't need to pay attention to the driver technology anymore. Thanks to a unique design, Philips MASTER LEDtube Mains T5 installs in luminaires operating on mains power connection. So simple to operate! . Perfectly safe, reliable & easy to install Philips MASTER LEDtube Mains T5 is the ideal alternative to standard fluorescent tubes to maximize value over lifetime with high energy saving and lower maintenance costs.

Product data

General Information	
Cap-Base	G5 [G5]
Nominal lifetime	50,000 hour(s)
Switching Cycle	200,000
Lighting Technology	LED
Flux measurement reference	Sphere
CE mark	Yes
EU RoHS compliant	Yes
Light Technical	
Color Code	865 [CCT of 6500K]
Beam Angle (Nom)	200 degree(s)
Luminous Flux	3,000 lumen
Color Designation	Cool Daylight
Correlated Color Temperature (Nom)	6500 K
Luminous Efficacy (rated) (Nom)	150 lm/W
Color Consistency	<6
Color rendering index (CRI)	80

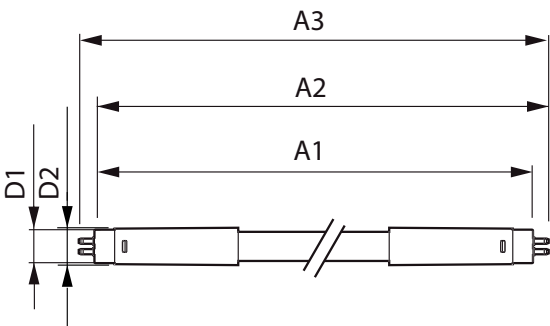
LLMF At End Of Nominal Lifetime (Nom)	70 %
Flickering value (PstLM)	1
Stroboscopic effect value (SVM)	0.4
Photobiological safety according to EN 62471	RG0
Operating and Electrical	
Line Frequency	50 to 60 Hz
Input Frequency	50 to 60 Hz
Power Consumption	20 W
Lamp Current (Nom)	99 mA
Wattage Equivalent	35 W
Starting Time (Nom)	0.5 s
Warm-up time to 60% light	0.5 s
Power Factor (Fraction)	0.9
Voltage (Nom)	220-240 V
LED alternative to fluorescent lamp power	35 W

MASTER LEDtube Mains T5

Temperature	
Ambient temperature range	-20 to +45 °C
T-Case Maximum (Nom)	55 °C
Controls and Dimming	
Dimmable	No
Mechanical and Housing	
Bulb Finish	Frosted
Bulb Material	Glass
Product Length	1,500 mm
Bulb Shape	Tube, double-ended
Approval and Application	
Energy Efficiency Class	D
Energy Saving Product	Yes
Approval Marks	RoHS compliance TUV CE marking KEMA Keur certificate

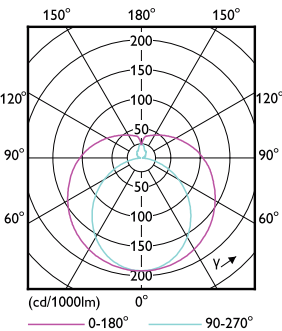
Energy Consumption kWh/1000 h	20 kWh
EPREL Registration Number	1476405
Product Data	
Full product code	871951433441000
Order product name	MAS LEDtube 1500mm HE 20W 865 T5 EU
Order code	929002421402
Numerator - Quantity Per Pack	1
Numerator - Packs per outer box	10
Material Nr. (12NC)	929002421402
Full product name	MAS LEDtube 1500mm HE 20W 865 T5 EU
EAN/UPC - Case	8719514334427
EAN/UPC - Product/Case	8719514334410

Dimensional drawing

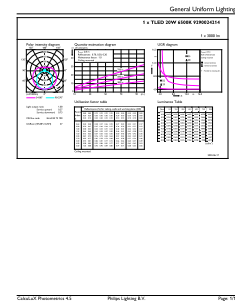


Product	D1	D2	A1	A2	A3
MAS LEDtube 1500mm HE 20W 865 T5 EU	15.7 mm	19 mm	1,449 mm	1,456.1 mm	1,463.2 mm

Photometric data



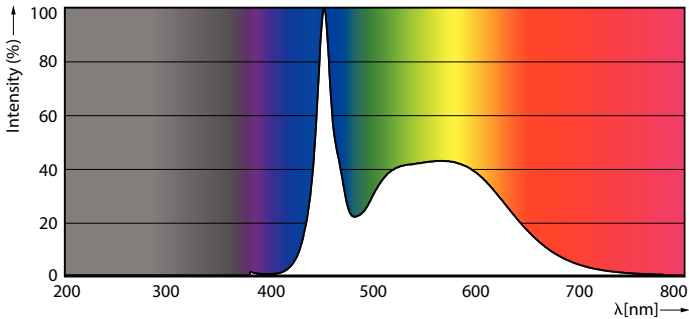
Light Distribution Diagram - MAS LEDtube 1500mm HE 20W 865 T5 EU



General uniform lighting - MAS LEDtube 1500mm HE 20W 865 T5 EU

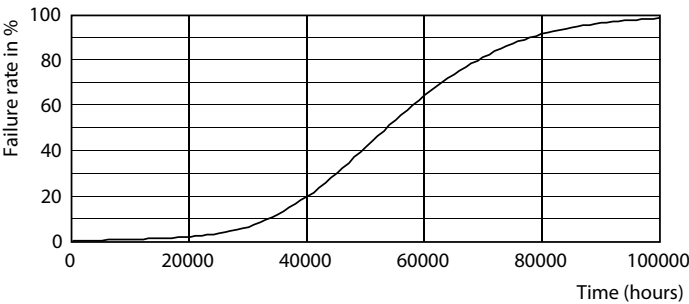
MASTER LEDtube Mains T5

Photometric data

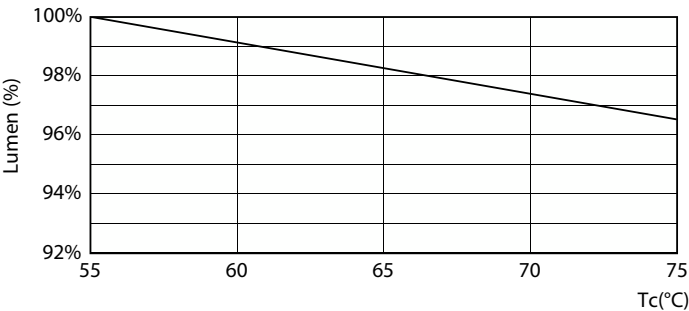


Spectral Power Distribution Colour - MAS LEDtube 1500mm HE 20W 865 T5 EU

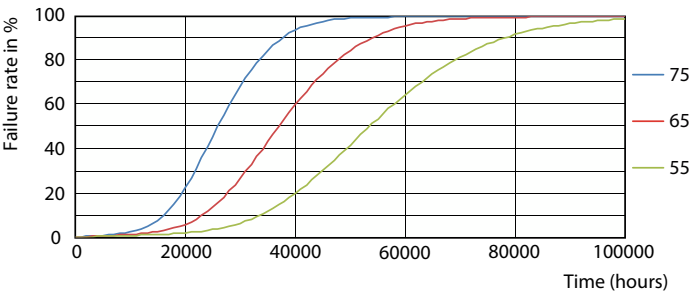
Lifetime



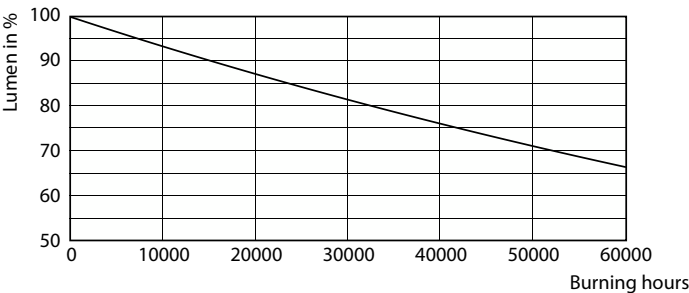
Life Expectancy Diagram - MAS LEDtube 1500mm HE 20W 865 T5 EU



Lumen Maintenance Diagram - MAS LEDtube 1500mm HE 20W 865 T5 EU



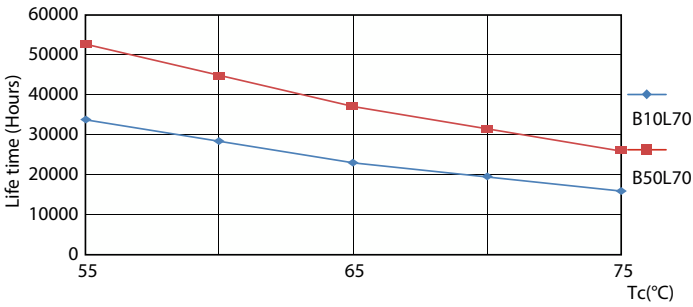
Life Expectancy Diagram



Lumen Maintenance Diagram - MAS LEDtube 1500mm HE 20W 865 T5 EU

MASTER LEDtube Mains T5

Lifetime



Life Expectancy Diagram

