



MASTER LEDtube Mains T5



MAS LEDtube 600mm HO 10.5W 865 T5

The new Philips Master LEDtube Mains T5 brings simplicity to your lighting project. You don't need to pay attention to the driver technology anymore. Thanks to a unique design, Philips MASTER LEDtube Mains T5 installs in luminaires operating on mains power connection. So simple to operate! . Perfectly safe, reliable & easy to install Philips MASTER LEDtube Mains T5 is the ideal alternative to standard fluorescent tubes to maximize value over lifetime with high energy saving and lower maintenance costs.

Product data

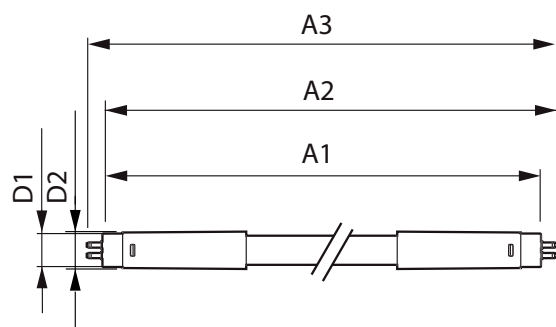
General Information	
Cap-Base	G5 [G5]
Nominal lifetime	50,000 hour(s)
Switching Cycle	200,000
Lighting Technology	LED
Flux measurement reference	Sphere
CE mark	Yes
EU RoHS compliant	Yes
Light Technical	
Color Code	865 [CCT of 6500K]
Beam Angle (Nom)	200 degree(s)
Luminous Flux	1,600 lumen
Color Designation	Cool Daylight
Correlated Color Temperature (Nom)	6500 K
Luminous Efficacy (rated) (Nom)	152 lm/W
Color Consistency	<6
Color rendering index (CRI)	80

LLMF At End Of Nominal Lifetime (Nom)	70 %
Flickering value (PstLM)	1
Stroboscopic effect value (SVM)	0.4
Photobiological safety according to EN 62471 RGO	
Operating and Electrical	
Input Frequency	50 to 60 Hz
Power Consumption	10.5 W
Lamp Current (Nom)	47 mA
Wattage Equivalent	24 W
Starting Time (Nom)	0.5 s
Warm-up time to 60% light	0.5 s
Power Factor (Fraction)	0.92
Voltage (Nom)	220-240 V
LED alternative to fluorescent lamp power	24 W
Temperature	
Ambient temperature range	-20 to +45 °C

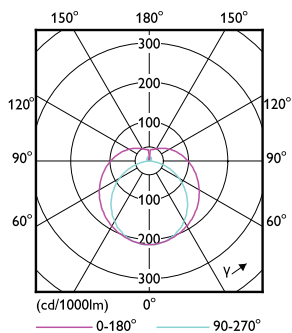
MASTER LEDtube Mains T5

T-Case Maximum (Nom)	60 °C
Controls and Dimming	
Dimmable	No
Mechanical and Housing	
Bulb Finish	Frosted
Bulb Material	Glass
Product Length	600 mm
Bulb Shape	Tube, double-ended
Approval and Application	
Energy Efficiency Class	D
Energy Saving Product	Yes
Approval Marks	RoHS compliance TUV CE marking KEMA Keur certificate

Dimensional drawing



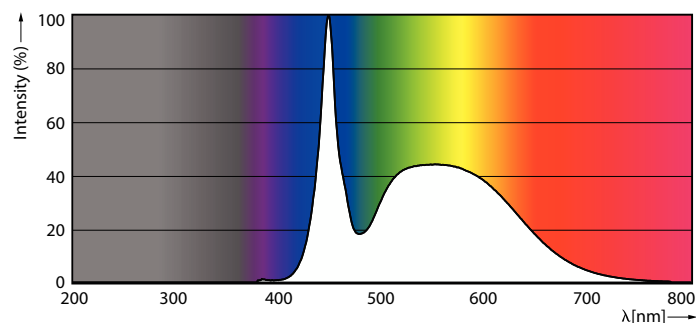
Photometric data



Light Distribution Diagram - MAS LEDtube 600mm HO 10.5W 865 T5

Energy Consumption kWh/1000 h	11 kWh
EPREL Registration Number	1590873
Product Data	
Full product code	872016927523200
Order product name	MAS LEDtube 600mm HO 10.5W 865 T5
Order code	929003734502
Numerator - Quantity Per Pack	1
Numerator - Packs per outer box	10
Material Nr. (12NC)	929003734502
Full product name	MAS LEDtube 600mm HO 10.5W 865 T5
EAN/UPC - Case	8720169275249
EAN/UPC - Product/Case	8720169275232

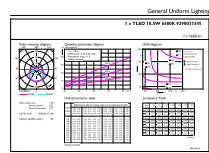
Product	D1	D2	A1	A2	A3
MAS LEDtube 600mm HO 10.5W 865 T5	19 mm	549 mm	556.1 mm	563.2 mm	



Spectral Power Distribution Colour - MAS LEDtube 600mm HO 10.5W 865 T5

MASTER LEDtube Mains T5

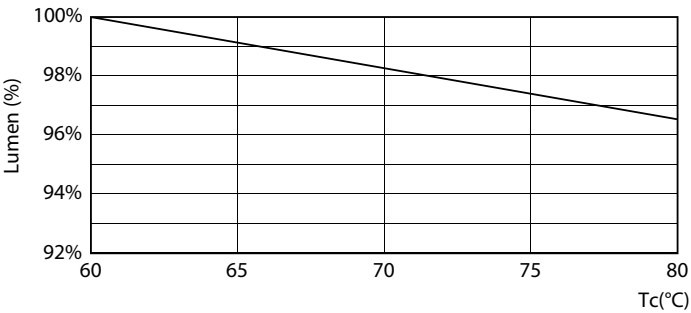
Photometric data



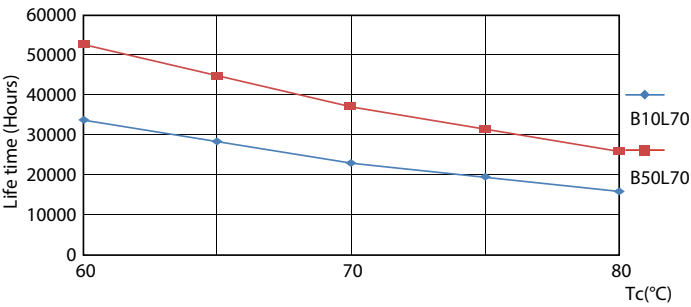
Technical Parameters 43 Page Lighting ETC Page 117

General uniform lighting - MAS LEDtube 600mm HO 10.5W 865 T5

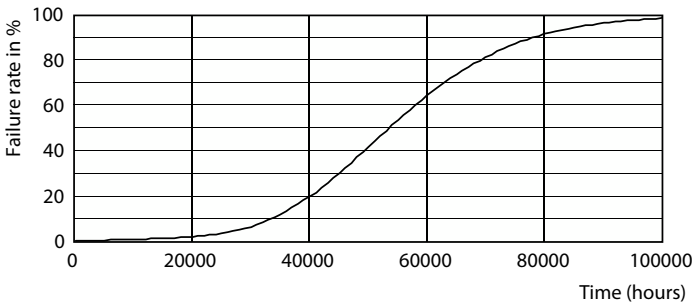
Lifetime



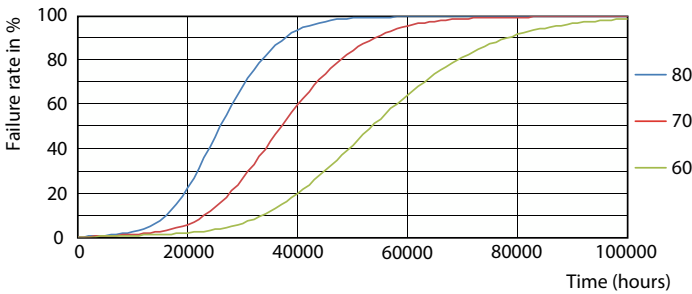
Lumen Maintenance Diagram - MAS LEDtube 600mm HO 10.5W 865 T5



Life Expectancy Diagram



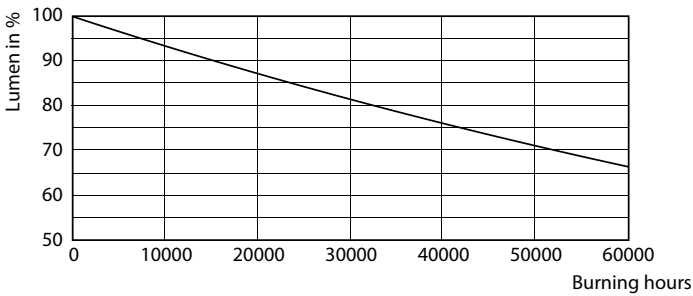
Life Expectancy Diagram - MAS LEDtube 600mm HO 10.5W 865 T5



Life Expectancy Diagram

MASTER LEDtube Mains T5

Lifetime



Lumen Maintenance Diagram - MAS LEDtube 600mm HO 10.5W 865 T5

