



MASTER LEDtube Mains T5



MAS LEDtube 900mm HO 18.5W 830 T5

The new Philips Master LEDtube Mains T5 brings simplicity to your lighting project. You don't need to pay attention to the driver technology anymore. Thanks to a unique design, Philips MASTER LEDtube Mains T5 installs in luminaires operating on mains power connection. So simple to operate! . Perfectly safe, reliable & easy to install Philips MASTER LEDtube Mains T5 is the ideal alternative to standard fluorescent tubes to maximize value over lifetime with high energy saving and lower maintenance costs.

Product data

General Information	
Cap-Base	G5 [G5]
Nominal lifetime	50,000 hour(s)
Switching Cycle	200,000
Lighting Technology	LED
Flux measurement reference	Sphere
CE mark	Yes
EU RoHS compliant	Yes
Light Technical	
Color Code	830 [CCT of 3000K]
Beam Angle (Nom)	200 degree(s)
Luminous Flux	2,600 lumen
Color Designation	White (WH)
Correlated Color Temperature (Nom)	3000 K
Luminous Efficacy (rated) (Nom)	140 lm/W
Color Consistency	<6
Color rendering index (CRI)	80

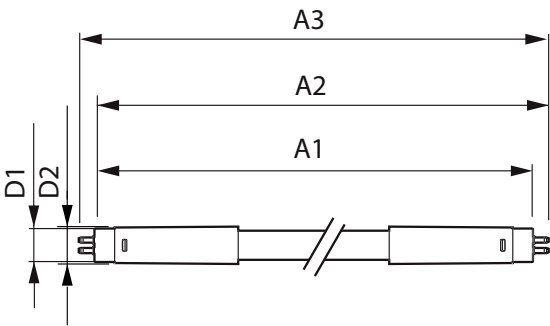
LLMF At End Of Nominal Lifetime (Nom)	70 %
Flickering value (PstLM)	1
Stroboscopic effect value (SVM)	0.4
Photobiological safety according to EN 62471	RG0
Operating and Electrical	
Input Frequency	50 to 60 Hz
Power Consumption	18.5 W
Lamp Current (Nom)	93 mA
Wattage Equivalent	39 W
Starting Time (Nom)	0.5 s
Warm-up time to 60% light	0.5 s
Power Factor (Fraction)	0.92
Voltage (Nom)	220-240 V
LED alternative to fluorescent lamp power	39 W
Temperature	
Ambient temperature range	-20 to +45 °C

MASTER LEDtube Mains T5

T-Case Maximum (Nom)	60 °C
Controls and Dimming	
Dimmable	No
Mechanical and Housing	
Bulb Finish	Frosted
Bulb Material	Glass
Product Length	900 mm
Bulb Shape	Tube, double-ended
Approval and Application	
Energy Efficiency Class	D
Energy Saving Product	Yes
Approval Marks	RoHS compliance TUV CE marking KEMA Keur certificate

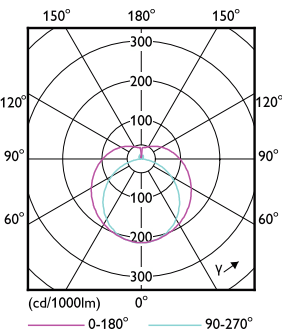
Energy Consumption kWh/1000 h	19 kWh
EPREL Registration Number	1590870
Product Data	
Full product code	872016927525600
Order product name	MAS LEDtube 900mm HO 18.5W 830 T5
Order code	929003734602
Numerator - Quantity Per Pack	1
Numerator - Packs per outer box	10
Material Nr. (12NC)	929003734602
Full product name	MAS LEDtube 900mm HO 18.5W 830 T5
EAN/UPC - Case	8720169275263
EAN/UPC - Product/Case	8720169275256

Dimensional drawing

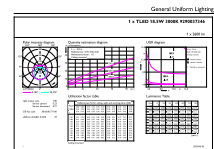


Product	D1	D2	A1	A2	A3
MAS LEDtube 900mm HO 18.5W 830 T5	19 mm	849 mm	856.1 mm	863.2 mm	

Photometric data



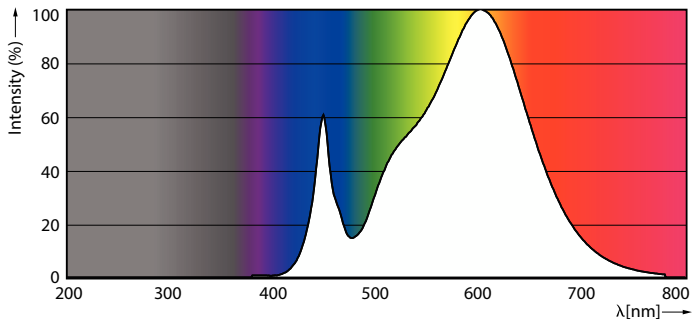
Light Distribution Diagram - MAS LEDtube 900mm HO 18.5W 830 T5



General uniform lighting - MAS LEDtube 900mm HO 18.5W 830 T5

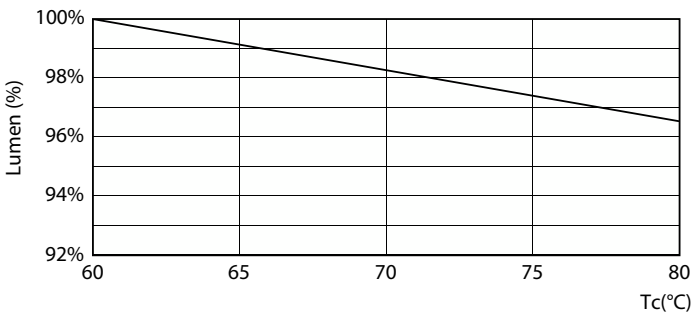
MASTER LEDtube Mains T5

Photometric data

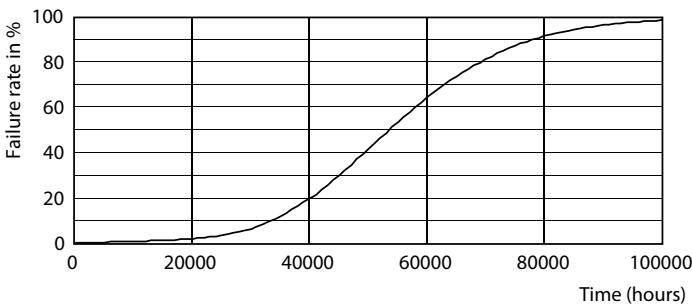


Spectral Power Distribution Colour - MAS LEDtube 900mm HO 18.5W 830 T5

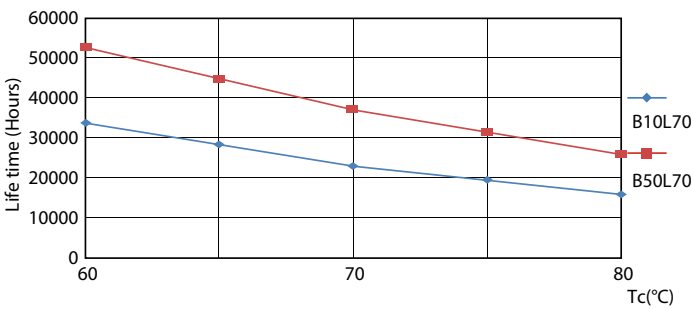
Lifetime



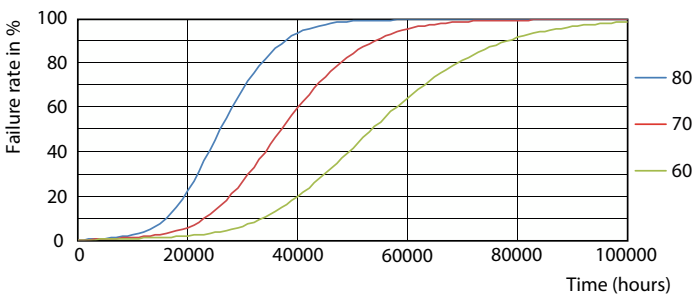
Lumen Maintenance Diagram - MAS LEDtube 900mm HO 18.5W 830 T5



Life Expectancy Diagram - MAS LEDtube 900mm HO 18.5W 830 T5



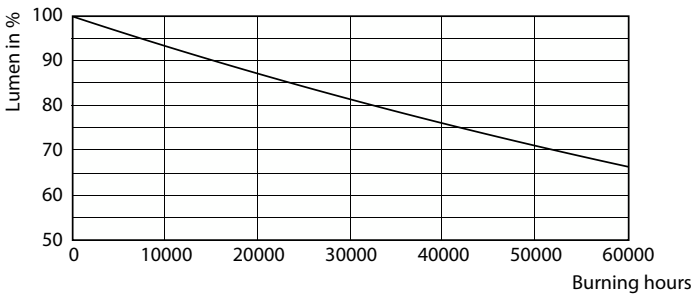
Life Expectancy Diagram



Life Expectancy Diagram

MASTER LEDtube Mains T5

Lifetime



Lumen Maintenance Diagram - MAS LEDtube 900mm HO 18.5W 830 T5

