



# CorePro LED PLC 2P



## CorePro LED PLC 8.9W 830 2P G24d-3

The CorePro LED PLC 2P integrates a LED light source into a traditional fluorescent form factor. This product is the ideal solution for uplampping in general lighting applications: it meets basic lighting requirements, offers significant energy savings and is environmentally friendly.

### Product data

General Information	
Cap base	G24d-3
Nominal lifetime	30,000 h
Switching Cycle	50,000
Lighting Technology	LED
Flux measurement reference	Sphere
Light Technical	
Colour Code	830 [CCT of 3000K]
Beam angle (nom.)	120 degree(s)
Luminous Flux	990 lm
Luminous efficacy (rated) (nom.)	111 lm/W
Colour designation	White (WH)
Correlated Colour Temperature	3000 K
Colour consistency	<6
Colour rendering index (CRI)	82
LLMF at end of nominal lifetime (nom.)	70 %
Flickering value (PstLM)	1
Stroboscopic effect	0.4
Photobiological safety according to EN 62471	RG1
Operating and Electrical	
Input frequency	50 to 60 Hz

Power Consumption	8.9 W
Lamp current (nom.)	52 mA
Starting time (nom.)	0.5 s
Warm-up time to 60% light	0.5 s
Power Factor (Fraction)	0.9
Voltage (nom.)	220-240 V
LED alternative to fluorescent lamp power	26 W
Inrush current at mains	2.77
Max. lamp no. on MCB B type 10A — Mains	198
Max. lamp no. on MCB B type 10A – EM ballast without Compensation Capacitor.	198
Max. lamp no. on MCB B type 10A – EM ballast with Compensation Capacitor.	-
Max. lamp no. on MCB B type 16A — Mains	317
Max. lamp no. on MCB B type 16A – EM ballast without Compensation Capacitor.	317
Max. lamp no. on MCB B type 16A – EM ballast with Compensation Capacitor.	-
Ballast Compatibility	EM/Mains

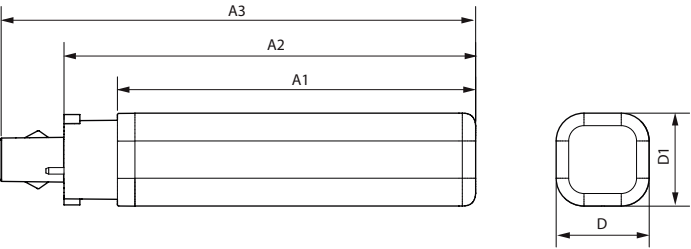
Temperature	
Ambient temperature range	-20 to +35 °C

CorePro LED PLC 2P

T-Case maximum (nom.)	75 °C
Controls and Dimming	
Dimmable	No
Mechanical and Housing	
Lamp Finish	Frosted
Bulb material	Plastic
Product length	200 mm
Bulb shape	PL-C
Approval and Application	
Energy Efficiency Class	E
Energy-saving product	Yes
Approval marks	RoHS compliance CE marking KEMA Keur certificate
Energy consumption kWh/1,000 hours	9 kWh
EPREL registration number	1820627

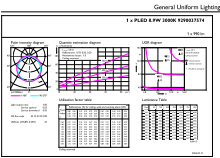
CE mark	Yes
EU RoHS compliant	Yes
Product Data	
Order product name	CorePro LED PLC 8.9W 830 2P G24d-3
Full product name	CorePro LED PLC 8.9W 830 2P G24d-3
Full EOC	872016928758700
Order code	28758700
Material no. (12 NC)	929003757402
SAP numerator – quantity per pack	1
Net Weight (Piece)	0.090 kg
EAN/UPC – Product/Case	8720169287587
Numerator – packs per outer box	10
EAN/UPC - Case	8720169287594

Dimensional drawing



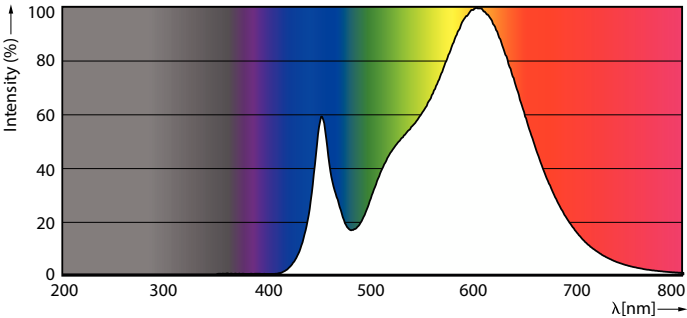
Product	D1	A1	A2	A3
CorePro LED PLC 8.9W 830 2P G24d-3	34 mm	129 mm	148 mm	171 mm

Photometric data



Technical Documentation 14 Page Lighting 011 Page 111

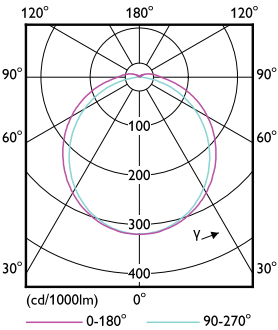
General uniform lighting - CorePro LED PLC 8.9W 830 2P G24d-3



Spectral Power Distribution Colour - CorePro LED PLC 8.9W 830 2P G24d-3

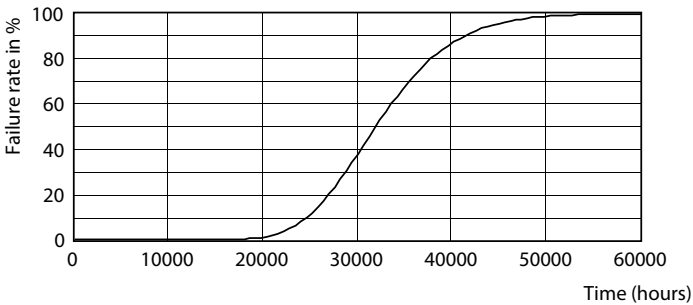
CorePro LED PLC 2P

Photometric data

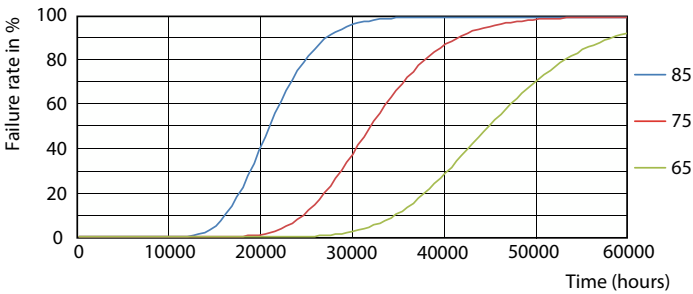


Light Distribution Diagram - CorePro LED PLC 8.9W 830 2P G24d-3

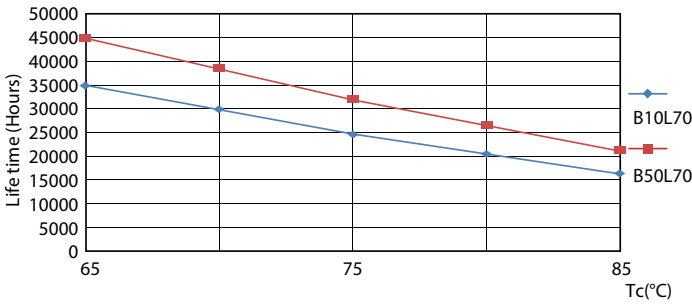
Lifetime



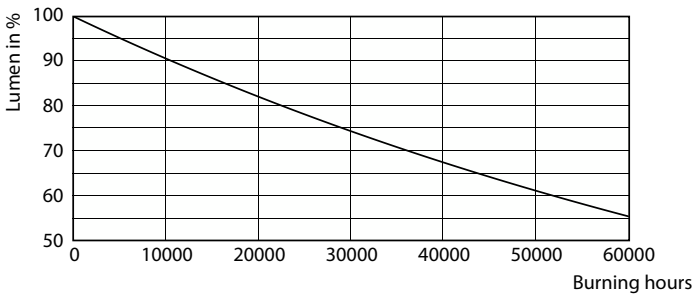
Life Expectancy Diagram



FailureRate



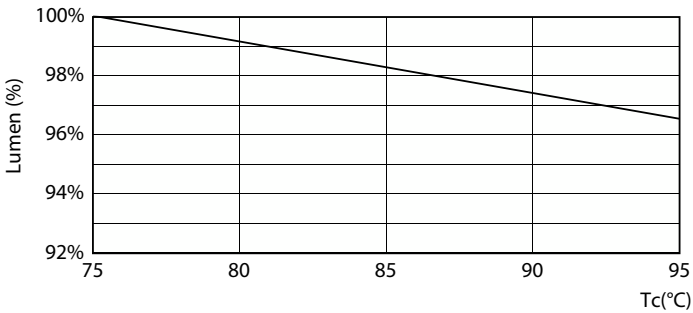
LifetimeVsTc



Lumen Maintenance Diagram - CorePro LED PLC 8.9W 830 2P G24d-3

CorePro LED PLC 2P

Lifetime



Lumen Maintenance Diagram - CorePro LED PLC 8.9W 830 2P G24d-3

