



# MASTER LEDtube EM/ Mains T8

## MAS LEDtube Sensor 1200mm HO 16.5W865 T8

The Philips MASTER LEDtube integrates a LED light source into a traditional fluorescent form factor. Its unique design creates a perfectly uniform visual appearance which cannot be distinguished from traditional fluorescent. For those that are looking for value for money within limited budget and re-lamping efforts for better light effect and lifetime.

### Product data

General Information	
Cap-Base	G13 [ Medium Bi-Pin Fluorescent]
Nominal Lifetime (Nom)	50000 h
Switching Cycle	200000X
B50L70	50000 h
Light Technical	
Color Code	865 [ CCT of 6500K]
Beam Angle (Nom)	240 °
Luminous Flux (Nom)	2100 lm
Luminous Flux (Rated) (Nom)	2100 lm
Rated Beam Angle	240 °
Correlated Color Temperature (Nom)	6500 K
Color Consistency	<6
Color Rendering Index (Nom)	83
LLMF At End Of Nominal Lifetime (Nom)	70 %
Operating and Electrical	
Input Frequency	50 to 60 Hz
Power (Rated) (Nom)	16.5 W

Lamp Current (Max)	85 mA
Lamp Current (Min)	65 mA
Starting Time (Nom)	0.5 s
Warm Up Time to 60% Light (Nom)	0.5 s
Power Factor (Nom)	0.9
Voltage (Nom)	220-240 V
Temperature	
T-Ambient (Max)	45 °C
T-Ambient (Min)	-20 °C
T-Storage (Max)	65 °C
T-Storage (Min)	-40 °C
T-Case Maximum (Nom)	55 °C
Controls and Dimming	
Dimmable	Yes
Mechanical and Housing	
Product Length	1200 mm

# MASTER LEDtube EM/Mains T8

## Approval and Application

Energy Saving Product	Yes
Energy Efficiency Label (EEL)	A++
Approval Marks	CE marking RoHS compliance KEMA Keur certificate
Energy Consumption kWh/1000 h	17 kWh

## Product Data

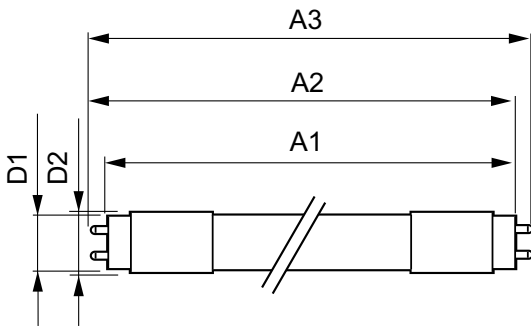
Full product code	871869680604300
Order product name	MAS LEDtube Sensor 1200mm HO 16.5W865 T8

EAN/UPC - Product	8718696806043
Order code	929001878602
Numerator - Quantity Per Pack	1
Numerator - Packs per outer box	10
Material Nr. (12NC)	929001878602
Net Weight (Piece)	0.215 kg

## Warnings and Safety

- NOTES: The overall energy efficiency and light distribution of any installation that uses these lamps are determined by the design of the installation.

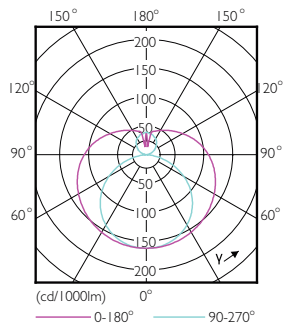
## Dimensional drawing



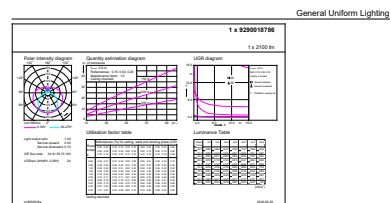
TLED 1200mm 16.5-36W 2100lm 6500K G13 D

Product	D1	D2	A1	A2	A3
MAS LEDtube Sensor 1200mm HO 16.5W865 T8	25.8 mm	28 mm	1199.4 mm	1206.5 mm	1213.6 mm

## Photometric data



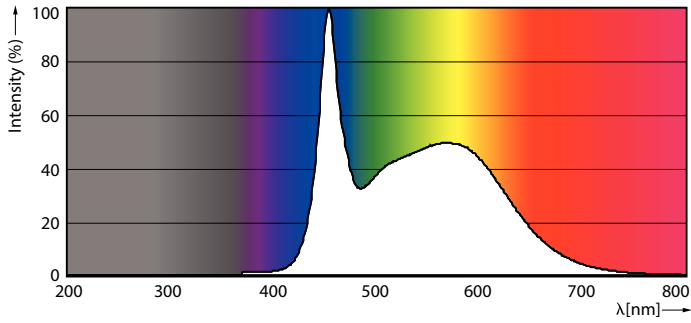
16-5W G13 840 4000K



CalculUX Photometrica 4.5 Philips Lighting B.V. Page: 1/1

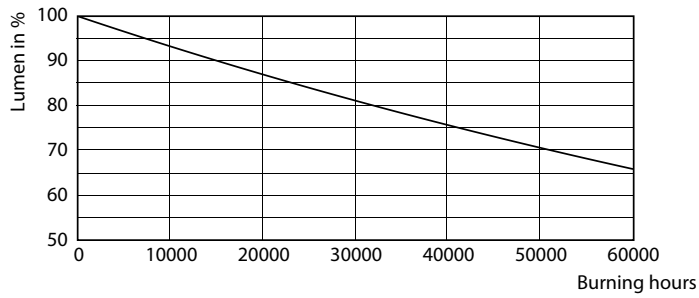
# MASTER LEDtube EM/Mains T8

## Photometric data

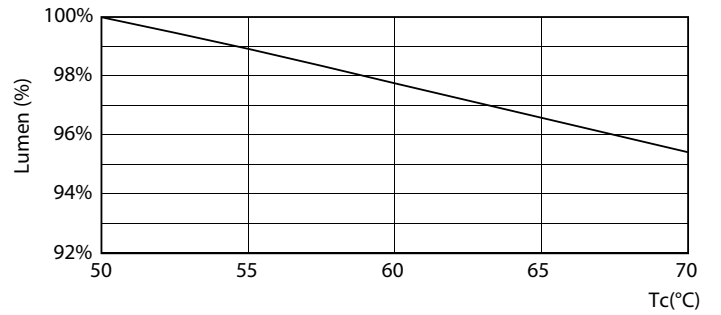


16-5W G13

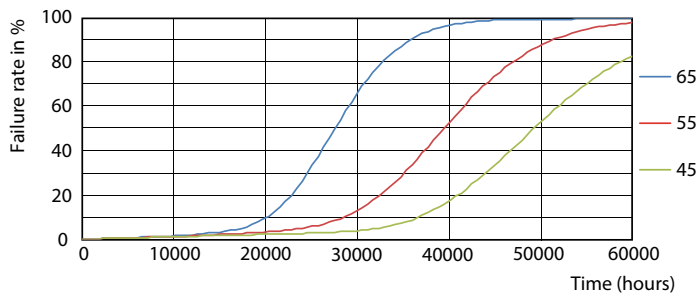
## Lifetime



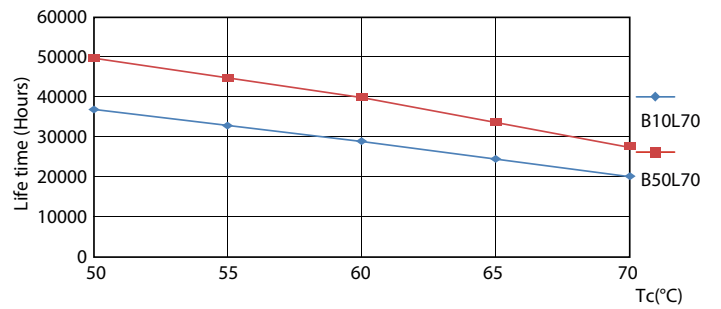
16-5W G13



16-5W G13



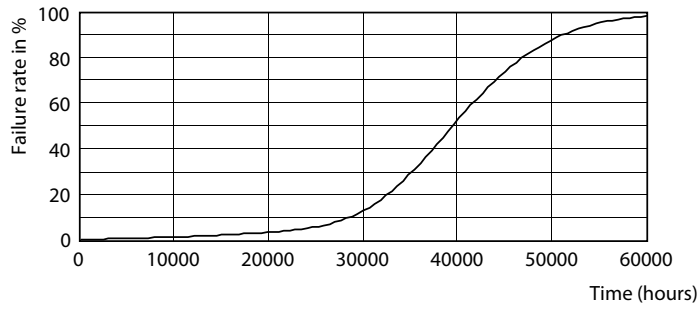
16-5W G13



16-5W G13

# MASTER LEDtube EM/Mains T8

## Lifetime



16-5W G13

