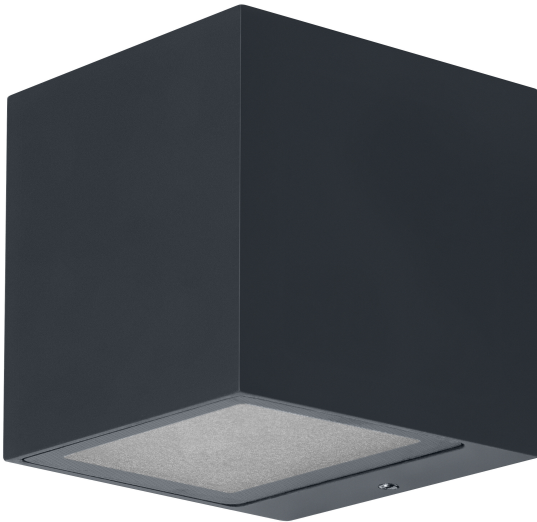


# PRODUCT DATASHEET

## SMART+ WIFI OUTDOOR BRICK Dark grey

SMART+ BRICK MULTICOLOR | Luminaire with WIFI technology



### Areas of application

- General illumination
- Gardens
- Patios, balconies

### Product benefits

- Easy and quick installation
- Colorful garden lighting with smart and intelligent control options

### Product features

- Controllable via LEDVANCE SMART+ WiFi App (with minimum Android™ 4.4 or iOS 10.0)
- Controllable via voice control available: Google Assistant or Amazon Alexa
- RGB color control, approx. 16 million color options adjustable
- Dimmable
- Color temperature: 3,000 K (Warm White)
- Network protocol: WiFi
- Type of protection: IP44



---

## TECHNICAL DATA

### Electrical data

|                           |               |
|---------------------------|---------------|
| Nominal wattage           | 14.00 W       |
| Nominal voltage           | 220...240 V   |
| Mains frequency           | 50...60 Hz    |
| Nominal current           | 101.000 mA    |
| Inrush current            | 3 A           |
| Power factor $\lambda$    | $\geq 0.5$    |
| Total harmonic distortion | < 20 %        |
| Protection class          | I             |
| Operating mode            | Mains voltage |

### Photometrical data

|  |            |
|--|------------|
| Luminous flux                                  | 550 lm     |
| Total luminous flux of contained light sources | 1350 lm    |
| Luminous efficacy                              | 40 lm/W    |
| Color temperature                              | 3000 K     |
| Light color (designation)                      | Warm White |
| Color rendering index Ra                       | $\geq 80$  |
| Standard deviation of color matching           | < 6 sdcM   |
| Flickering metric (Pst LM)                     | $\leq 1$ % |
| Stroboscope effect metric (SVM)                | $\leq 0.4$ |
| Photobiological safety group acc. to EN62778   | RG0        |
| Photobiological safety group acc. to EN62471   | RG0        |
| Beam angle                                     | 275.00 °   |

### Dimensions & Weight

|                |          |
|----------------|----------|
| Length         | 85.00 mm |
| Width          | 85.00 mm |
| Height         | 85.00 mm |
| Product weight | 530.00 g |

## Materials & Colors

|                 |                    |
|-----------------|--------------------|
| Product color   | Dark gray          |
| Housing color   | Dark gray          |
| Body material   | Aluminum           |
| Cover material  | Polycarbonate (PC) |
| Mercury content | 0.0 mg             |

## Application & Mounting

|  |                             |
|--|-----------------------------|
| Ambient temperature range              | -20...+40 °C                |
| Temperature range at storage           | -20...+80 °C                |
| Type of connection                     | Terminal, 3-Pole (L, N, PE) |
| Type of protection                     | IP44                        |
| Protection class IK (shock resistance) | IK03                        |
| Dimmable                               | Yes                         |
| Type of dimming                        | WiFi                        |
| Mounting type                          | Surface                     |
| Mounting location                      | Wall                        |
| Application environment                | Outdoor                     |
| LED module replaceable                 | Not replaceable             |

## Lifespan

|                            |         |
|----------------------------|---------|
| Lifespan L70/B50 at 25 °C  | 25000 h |
| Number of switching cycles | 12500   |

## Emergency lighting

|                        |    |
|------------------------|----|
| Integrated test switch | No |
|------------------------|----|

## Certificates & Standards

|           |           |
|-----------|-----------|
| Standards | CE / UKCA |
|-----------|-----------|

## EQUIPMENT / ACCESSORIES

- Mounting screws and dowels included
- Control via app or voice control requires compatible Smart home system
- For control via LEDVANCE SMART + WiFi App, a smart phone or Tablet PC is required

## DOWNLOAD DATA

## DOWNLOAD DATA



User instruction



Declarations of conformity

## LOGISTICAL DATA

| Product code  | Packaging unit (Pieces/Unit) | Dimensions (length x width x height) | Gross weight | Volume               |
|---------------|------------------------------|--------------------------------------|--------------|----------------------|
| 4058075564367 | Folding box<br>1             | 92 mm x 92 mm x 97 mm                | 614.00 g     | 0.82 dm <sup>3</sup> |
| 4058075564374 | Shipping box<br>4            | 200 mm x 200 mm x 125 mm             | 2644.00 g    | 5.00 dm <sup>3</sup> |

The mentioned product code describes the smallest quantity unit which can be ordered. One shipping unit can contain one or more single products. When placing an order, for the quantity please enter single or multiples of a shipping unit.

## DISCLAIMER

Subject to change without notice. Errors and omission excepted. Always make sure to use the most recent release.

