



Plusline ES Small

Plusline ES Small 118mm 2y 240W R7s 230V 1BB

Mains-voltage halogen linear lamp with superior quality and reliability. Offers very long lifetime and crisp halogen light. Ideal solution for decorative luminaires and for security or task lighting floodlights.

Product data

• General Information

Cap-Base	R7S [R7s]
Operating Position	UNIVERSAL [Any or Universal (U)]
Nominal Lifetime (Nom)	2000 h
Switching Cycle	8000X

• Light Technical

Luminous Flux (Nom)	4900 lm
Luminous Flux (Rated) (Nom)	4900 lm
Correlated Color Temperature (Nom)	2900 K
Luminous Efficacy (rated) (Nom)	20.4 lm/W
Color Rendering Index (Nom)	100
Lmf At End Of Nominal Lifetime (Min)	80 %

• Operating and Electrical

Power (Rated) (Nom)	240.0 W
Lamp Current (Nom)	1.04 A
Wattage Equivalent	300 W
Starting Time (Nom)	0.0 s
Warm Up Time To 60% Light (Nom)	instant full light
Power Factor (Nom)	1
Voltage (Nom)	230 V

• Controls and Dimming

Dimmable	Yes
----------	-----

• Mechanical and Housing

Bulb Finish	Clear (CL)
-------------	------------

• Approval and Application

Energy Efficiency Label (EEL)	D
Energy Consumption kWh/1000 h	240 kWh

• Luminaire Design Requirements

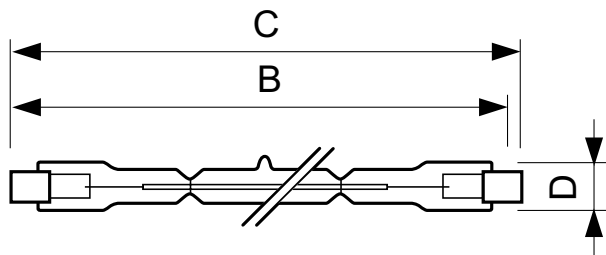
Bulb Temperature (Max)	900 °C
Pinch Temperature (Max)	350 °C

• Product Data

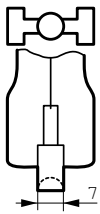
Full product code	872790085380300
Order product name	Plusline ES Small 118mm 2y 240W R7s 230V 1BB
EAN/UPC - Product	8727900853803
Order code	924572044210
Numerator - Quantity Per Pack	1
Numerator - Packs per outer box	100
Material Nr. (12NC)	924572044210
Net Weight (Piece)	9.000 g
ILCOS Code	HDG/RS-240-230-R7s-114,2

PHILIPS

Dimensional drawing



R7s



DESmall 118mm 2y 240W R7s 230V T11 CL

Product	D	B	B	B	C
Plusline ES Small 118mm 2y 240W R7s 230V 1BB	11 mm	115.8 mm	114.2 mm	112.6 mm	118 mm



© 2015 Philips Lighting Holding B.V.
All rights reserved.

Specifications are subject to change without notice. Trademarks are the property of Koninklijke Philips N.V. (Royal Philips) or their respective owners.

www.philips.com/lighting

2015, December 28
data subject to change