



HF-Matchbox Red

HF-M RED 118 SH PL-C/PL-T 230-240V

HF-Matchbox Red is an affordable, reliable, compact, lightweight and high-frequency ballast for use with system wattages below 25 W in combination with TL mini, TL-D, TL5 and TL5c, PL-T/C, and PL-L/S lamps. The HF-M Red range has a robust design, meets all relevant international safety and performance standards and has an energy efficiency index (CELMA EEI) of A2.

Product data

General Information		Cable Length Hot Wiring	
Lamp Type	PL-C/PL-T	Cable Length Hot Wiring	0.30 m
Number Of Lamps	1 piece/unit	Wire Striplength	8.0-9.0 mm
Number of Products on MCB (16A Type B) (Nom)	73	Input Terminal Cross Section	0.50-1.50 mm ²
Automatic Restart	Yes	Output Terminal Cross Section	0.50-1.50 mm ²
Operating and Electrical		System characteristics	
Input Voltage	230 to 240 V	Rated Ballast-Lamp Power	18 W
Input Frequency	50 to 60 Hz	Rated Lamp Power on PL-T	18 W
Power Factor 100% Load (Nom)	0.62	System Power on PL-T	17.3 W
Ignition Time (Max)	0.45 s	Power Loss on PL-T	2.1 W
Mains Voltage Performance (AC)	-8%+6%	Lamp Power on PL-T	15.2 W
Mains Voltage Safety (AC)	-10%+10%	System Power on PL-C	17.9 W
Power Losses (Nom)	2.0-2.1 W	Rated Lamp Power on PL-C	18 W
		Power Loss on PL-C	2 W
		Lamp Power on PL-C	15.9 W
Wiring		Temperature	
Connector Type Input Terminals	Insert	T-Ambient (Max)	40 °C
Color Input Terminals	Orange	T-Ambient (Min)	-10 °C
Color Output Terminals	Grey	T-Case Maximum (Max)	75 °C
Connector Type Output Terminals	Insert		
Cable Length From Device to Lamp	1.50 m		

HF-Matchbox Red

Mechanical and Housing

Housing SH

Emergency Operation

Battery Voltage Lamp Ignition 194-254 V

Approval and Application

Approval Marks F-Marking CE marking ENEC certificate CB Certificate

Product Data

Full product code 871150092802330

Order product name HF-M RED 118 SH PL-C/PL-T 230-240V

EAN/UPC - Product 8711500928023

Order code 913700423466

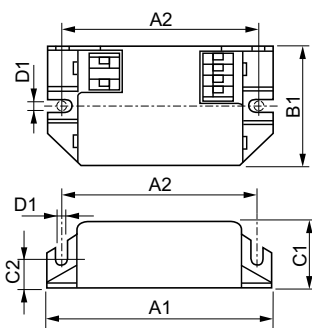
Numerator - Quantity Per Pack 1

Numerator - Packs per outer box 50

Material Nr. (12NC) 913700423466

Net Weight (Piece) 0.034 kg

Dimensional drawing



Product	D1	C1	C2	A1	A2	B1
HF-M RED 118 SH PL-C/PL-T 230-240V	4.4 mm	22.0 mm	10.0 mm	80.0 mm	70.0 mm	40.0 mm

HF-M RED 118 SH PL-C/PL-T 230-240V

